

Merit LILIN Application Note

How to use SIP protocol via Control4

Document Number : A00082

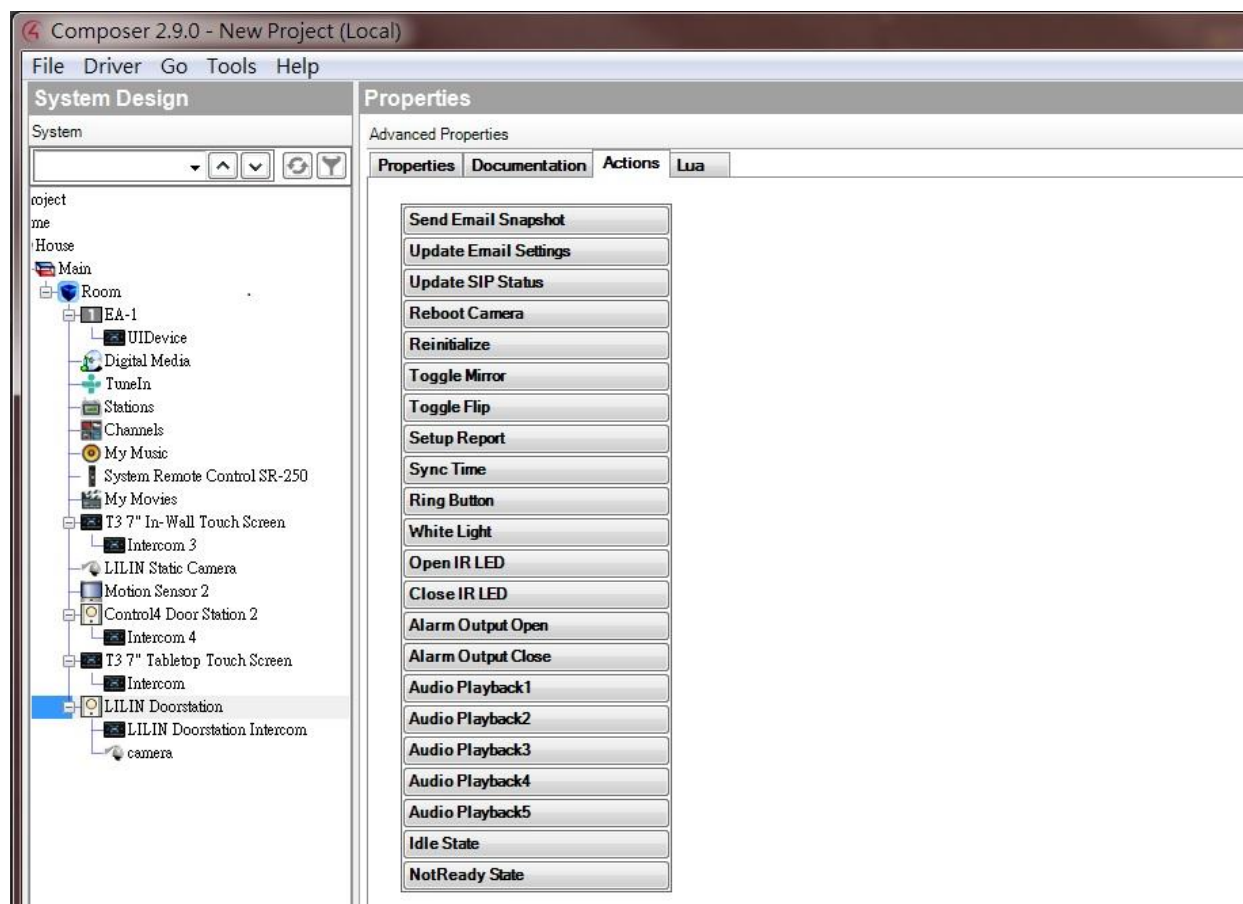
Date : 11/30/2016

Dept : Technical Support, Taipei

Subject: SIP communication of LILIN IP door station via Control4

Features:

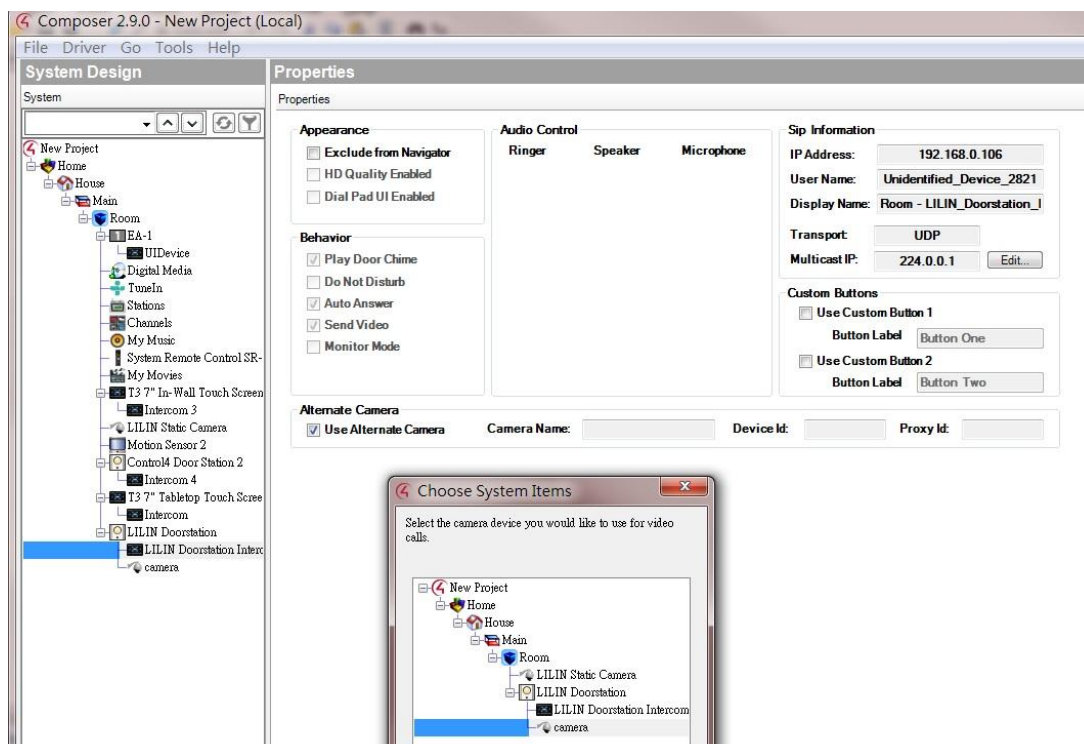
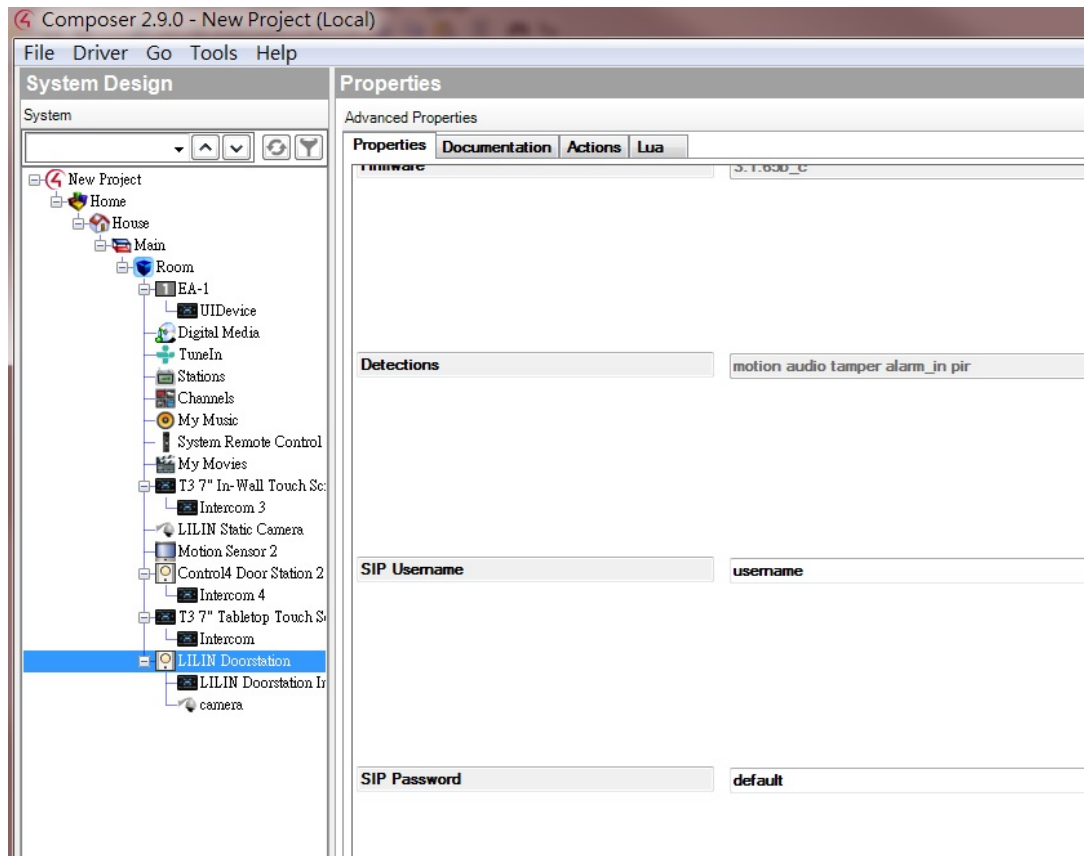
1. LILIN door station and SIP cameras can communicate with Control4 touch screen via Control4 SIP server (controller).
2. LILIN door station and SIP cameras can communicate with Linphone via Control4 SIP server (controller).
3. Both video and audio are supported.
4. SDDP is supported for LILIN door station proxy
5. Email notification via camera driver for motion, bell button, and DI alarm
6. Door station and camera features are integrated in driver:
LILIN_doorstation_proxy_template.c4z.
7. Support Mic and volume control





How to Setup the Driver

1. Setup SIP username and SIP password via Properties page.
2. Update SIP Status button to update the camera.
3. Select Alternate Camera (door camera)
4. Refresh Navigators





How to use

Firmware requirements

Control4 touch screen supported: C4-TT7-BL

Camera supported: IPC0522 door station

Firmware version: 3.1.65g or higher

Control4 version: 2.8.0 or higher

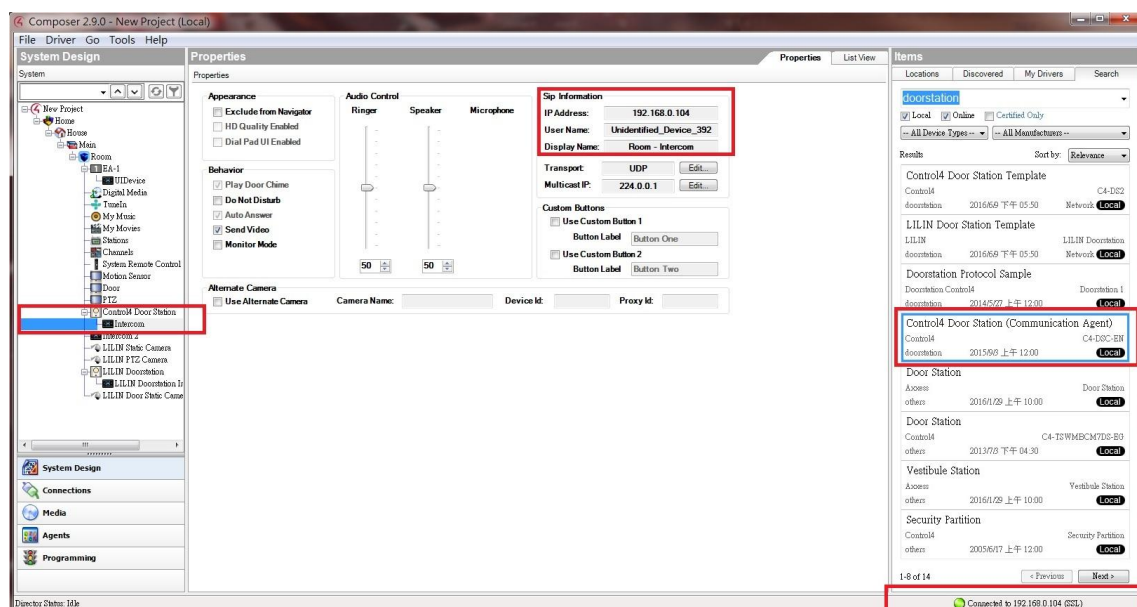
Linephone version: 2.2.5 or higher

To verify SIP clients (LILIN door station) are registered, logon Control4 controller at port 5080.

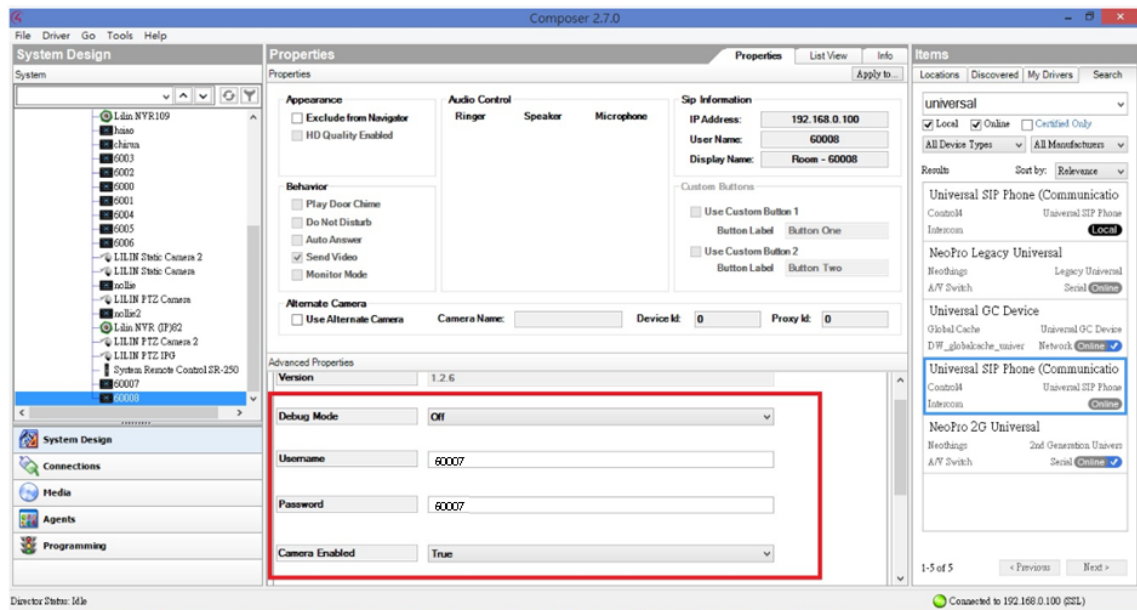
1. Communicate two SIP door stations via a Control4 Controller.

- In System Design, search “LILIN Door Station” driver and install the driver via Composer. Assume the IP address of Control4 controller (SIP server) is 192.168.0.100.

LILIN Door Station		
LILIN		LILIN Doorstation
doorstation	2016/6/9 下午 05:50	Network Local
LILIN IP Camera		
LILIN		Static Models
Camera	2016/8/25 下午 02:30	Network Local
LILIN IP Camera		
LILIN		PTZ Models
Camera	2016/8/16 下午 02:30	Network Local



Create a SIP client, 60007, for LILIN IP door station at Composer, by specifying SIP username and SIP password. The SIP username and SIP password should match LILIN door station's SIP username and SIP password.



- Enter Control4 controller's IP address at SIP Domain Server within the LILIN door station. LILIN door station will register Control4's controller. Assume that LILIN door station's Registration Username (SIP username) is 60007.



Live | Basic Mode | Advance Mode | Language | Logout

System Video / Audio Network Event Notification Maintenance

General General IPv6 HTTP/RTSP Service Multicast IP Address Filtering DDNS UPnP Bonjour SDDP / Heartbeat SNMP SIP

Advance >> Network >> SIP

VOIP ☒ Enable ☐ Disable

SIP Domain Server

Registration Username

Registration Password

Registration Expires

SIP Port

Audio RTP-Port

Submit

Extension

Remote Username

Remote IP

Remote Port

Call Status Connected to 60008@192.168.0.238...

Start Call End Call

- Setup another door station with SIP username at 60008. Specify Remote Username and click "Start Call" button. SIP users 60007 and 60008 can communicate with each other via Control4 controller.

General
General IPv6
HTTP/RTSP Service
Multicast
IP Address Filtering
DDNS
UPnP
Bonjour
SDDP / Heartbeat
SNMP
SIP

Advance >> Network >> SIP

VOIP
SIP Domain Server
Registration Username
Registration Password
Registration Expires
SIP Port
Audio RTP-Port

☒ Enable ☐ Disable
192.168.0.100
60008
.....
30
5060
7078

Submit

Extension

Ext. 1

Remote Username

6003

Remote IP

192.168.0.100

Remote Port

5060

Call Status
Connected to
60007@192.168.0.174...

Start Call

End Call

2. How to setup Control touch panel for LILIN door station for dell button triggering

- Call Control4 touch screen triggered by the bell button of LILIN door station. For the Remote Username, please enter the MAC address of the touch screen from LILIN door station. You are able to trigger the touch screen via LILIN door station.

General
General IPv6
HTTP/RTSP Service
Multicast
IP Address Filtering
DDNS
UPnP
Bonjour
SDDP / Heartbeat
SNMP
SIP

Advance >> Network >> SIP

VOIP
SIP Domain Server
Registration Username
Registration Password
Registration Expires
SIP Port
Audio RTP-Port

☒ Enable ☐ Disable
192.168.3.105
7002
.....
30
5060
7078

Submit

Extension

Ext. 1

Remote Username

000FFF8083C8

Remote IP

192.168.3.105

Remote Port

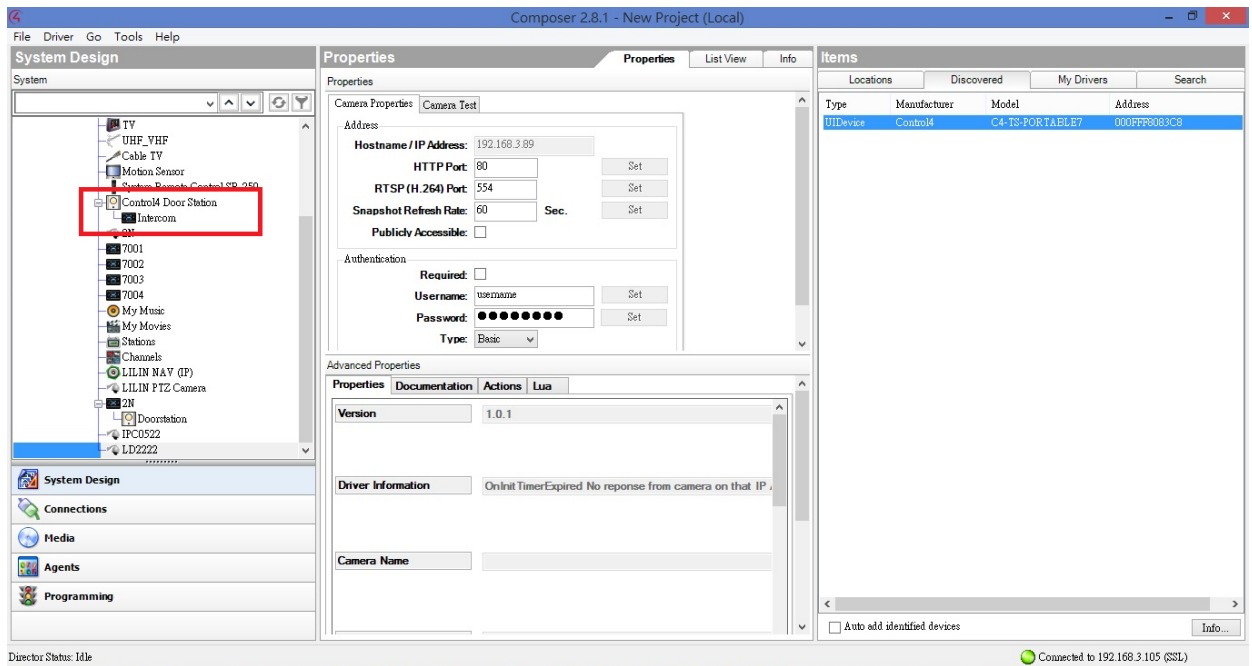
5060

Call Status
Ready

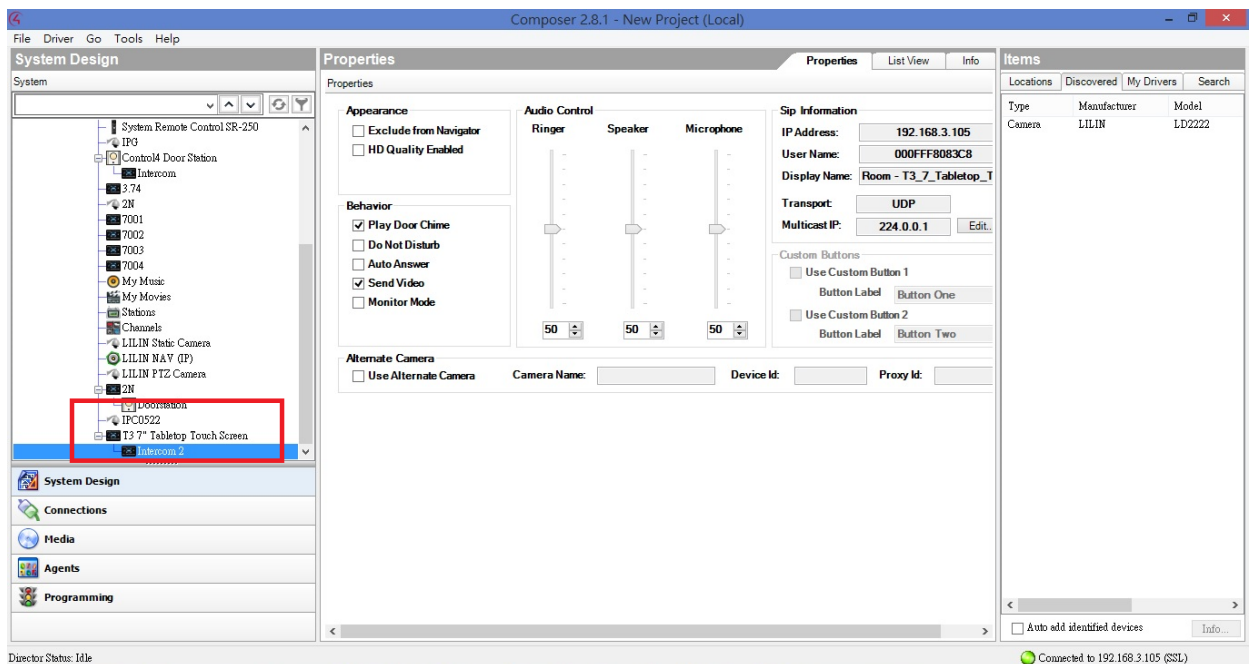
Start Call

End Call

- Create an Intercom of Control Door Station for LILIN door station.
- Specify username and password for the Intercom



- Create a Tabletop Touch Screen.



- Visit HTML page of LILIN door station.
- Enter the Mac address of the Control4 Tabletop Touch Screen at Remote Username field.
- Enter SIP Domain Server, SIP Port and Audio Port.
- You can then press bell button or click Start Call for calling the Tabletop Touch Screen.

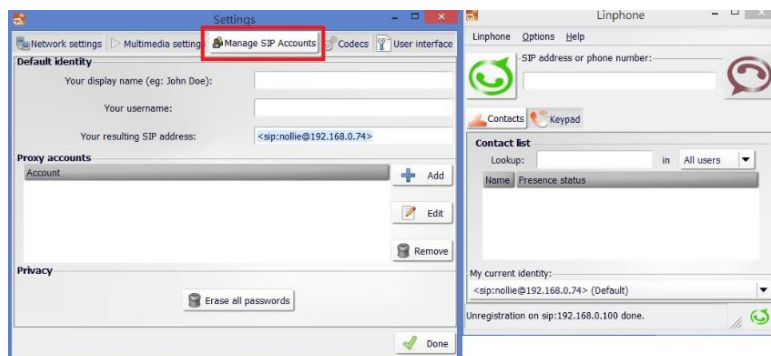
System	Video / Audio	Network	Event	Notification	Maintenance
<div> <div> General General IPv6 HTTP/RTSP Service Multicast IP Address Filtering DDNS UPnP Bonjour SDDP / Heartbeat SNMP SIP </div> <div> Advance >> Network >> SIP </div> </div>					
<div> <div> VOIP SIP Domain Server Registration Username Registration Password Registration Expires SIP Port Audio RTP-Port </div> <div> <input checked="" type="radio"/> Enable <input type="radio"/> Disable 192.168.3.105 7002 ••••• 30 5060 7078 </div> </div>					
<div> <div> Extension Remote Username Remote IP Remote Port Call Status </div> <div> Ext. 1 000FFF8083C8 192.168.3.105 5060 Ready </div> </div>					
<div> <div> Start Call End Call </div> </div>					

3. Use Linphone to verify the connection for an IP camera.

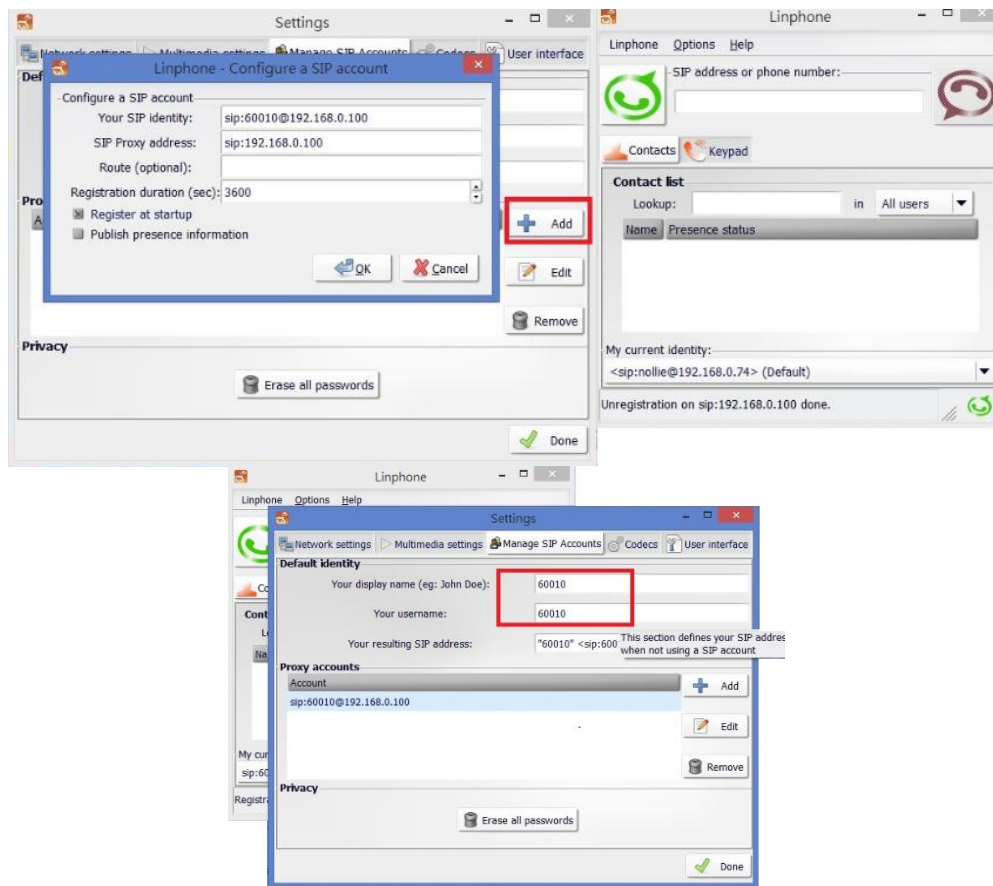
- Click on “Options->Preferences->Manage SIP Accounts”.



- Click on “+ Add” button to add a SIP account.



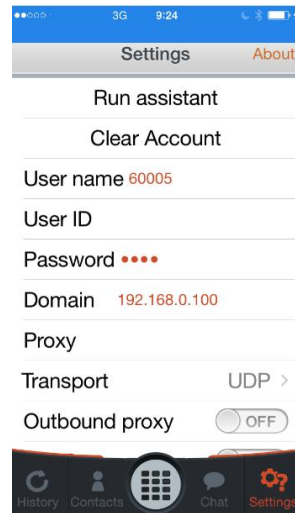
- Type SIP: 60010@192.168.0.100 where 192.168.0.100 is the IP address of Control4 controller and 60010 is the SIP username for Your SIP identity. Type SIP: 192.168.0.100 for Control4 controller's IP address.



- You can now use Linphone to call LILIN cameras or vice versa.



- Linphone on Android or iOS can be used for communicating with LILIN cameras.



Contact

Contact lilin.zendesk.com for technical support.