

## Merit LILIN Application Note

### How to Control NVR to Start or Stop Recording via Control4 System

Document Number : A00124

Date : 2015/05/23

Dept: Technical Support, Taipei

**Subject:** This document describes how to control a LILIN NVR to start & stop recording with Control4 event programming.

This process can be used for enabling/disabling NVR recording E.G. enable recording if a family leave their house or for disabling NVR recording if a family are home. This is triggered by a digital input of a lock.

This can be used for enabling NVR recording, if a camera motion detector is activated.

#### Requirements:

LILIN NVR

LILIN IP Camera

Control4

Control4 Composer (V2.9.1 or above)

LILIN Control4 NVR Driver (V1.0.7)

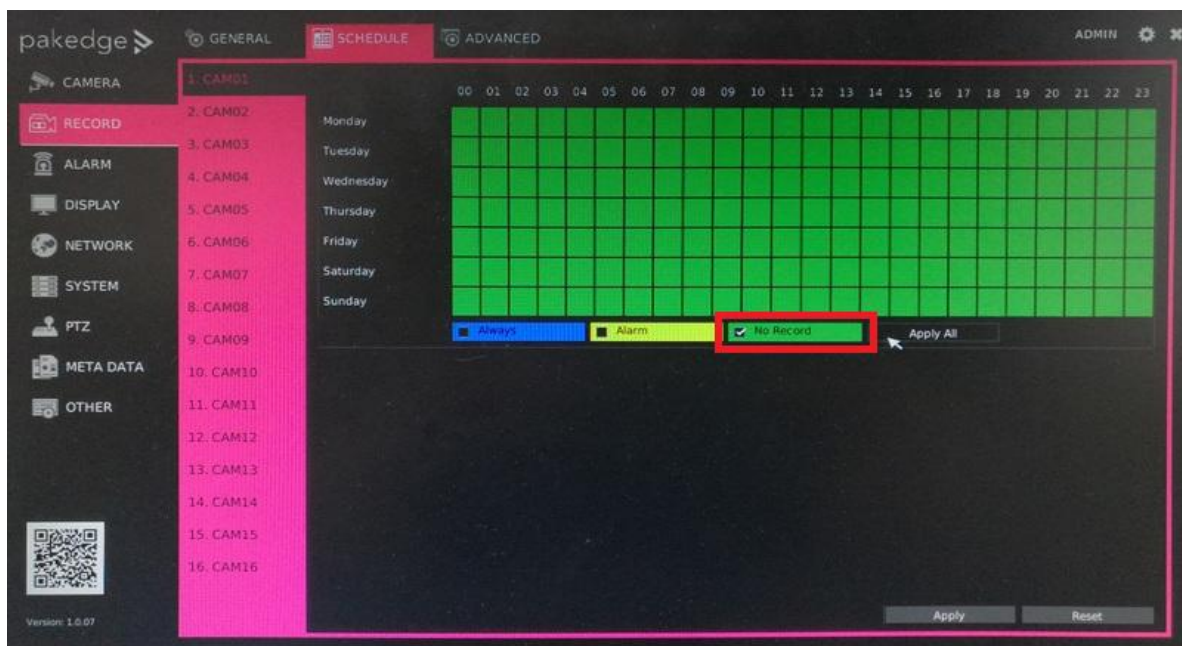
LILIN NVR Firmware Version 1.1.63 (05.25#4065 or above)

LILIN PTZ IP Camera Driver (V1.1.2 or above)

LILIN IP Camera Driver (V1.0.3 or above)

#### Set NVR Schedule Recording to No Record

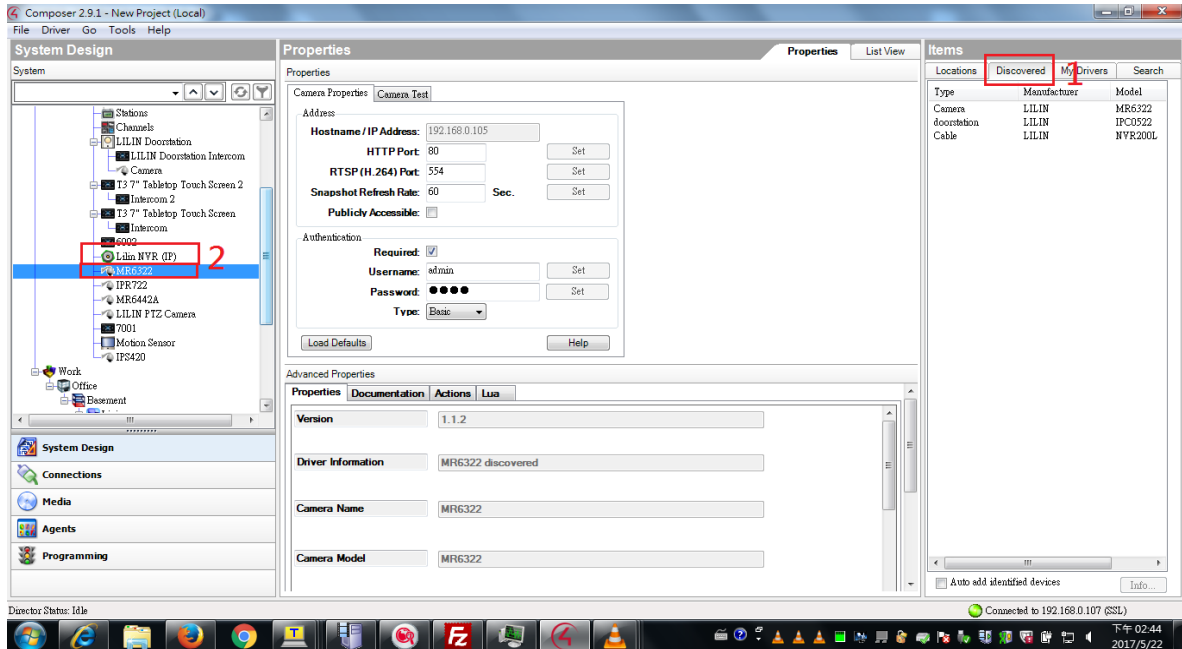
1. Modify all camera schedule recording to No Record.





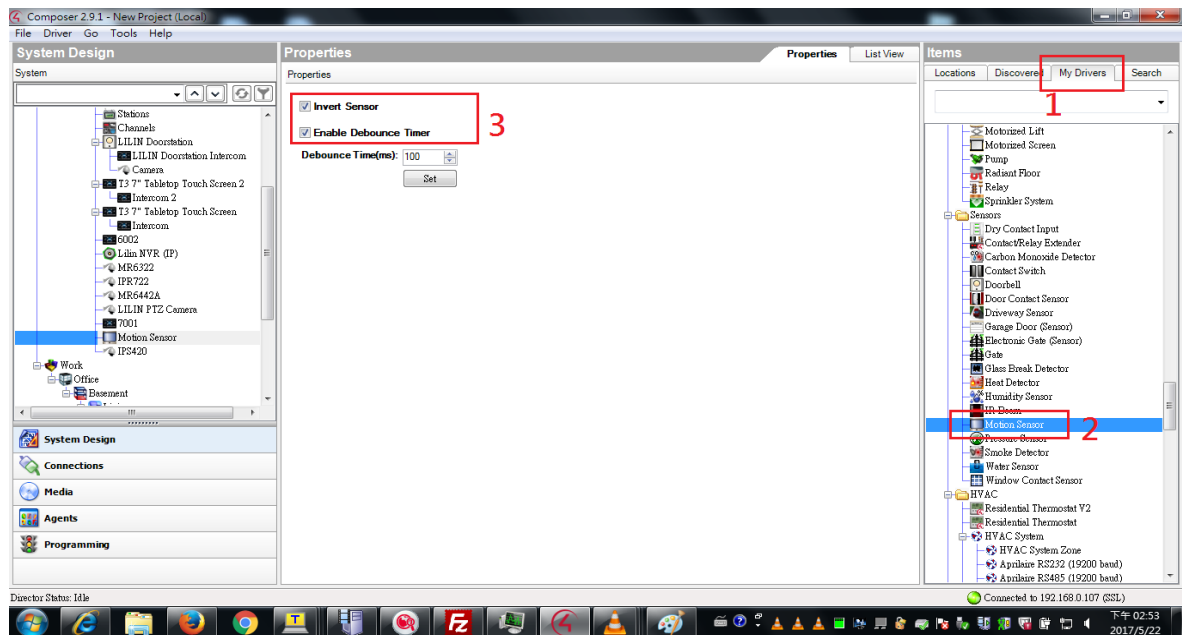
## Add a NVR & IP Camera to Control4 Composer

- Execute Composer 2.9.1.
- Click the 'Discovered' tab, select and double click which NVR and IP camera you want to add to Composer, and then you will see them on the left of the list



## Add a Motion Sensor

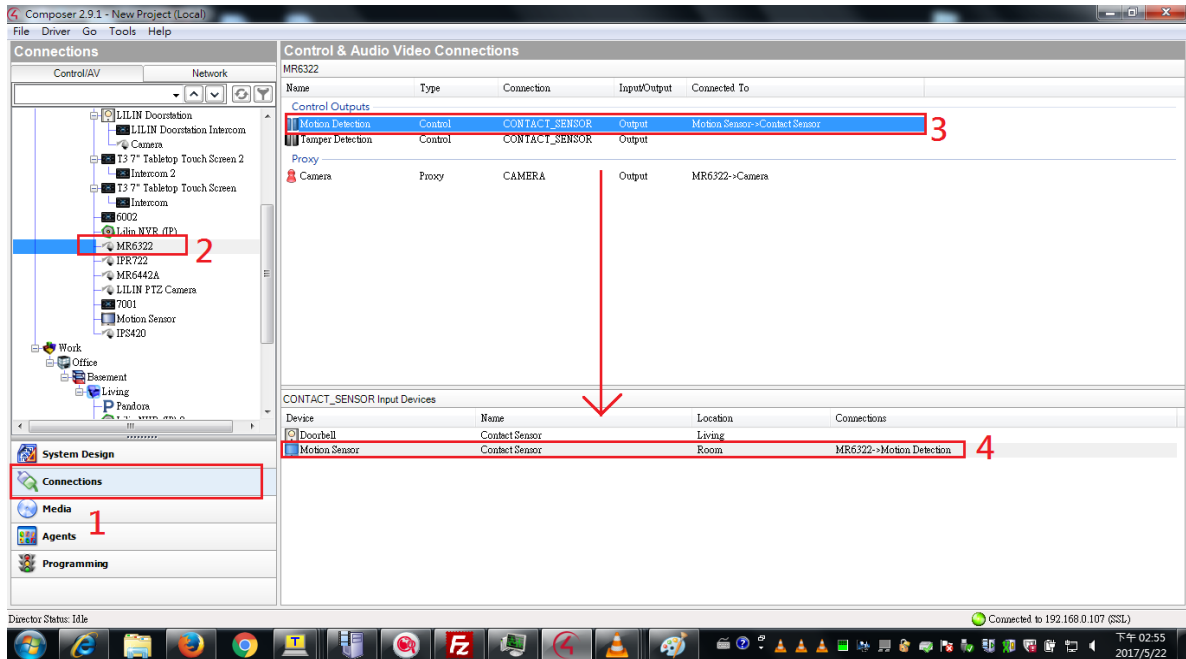
- Click the 'My Drivers' tab, select and double click Motion Sensor, and then you will see it on the list on the left.
- Check both "Invert Sensor" and Enable "Debounce Timer".






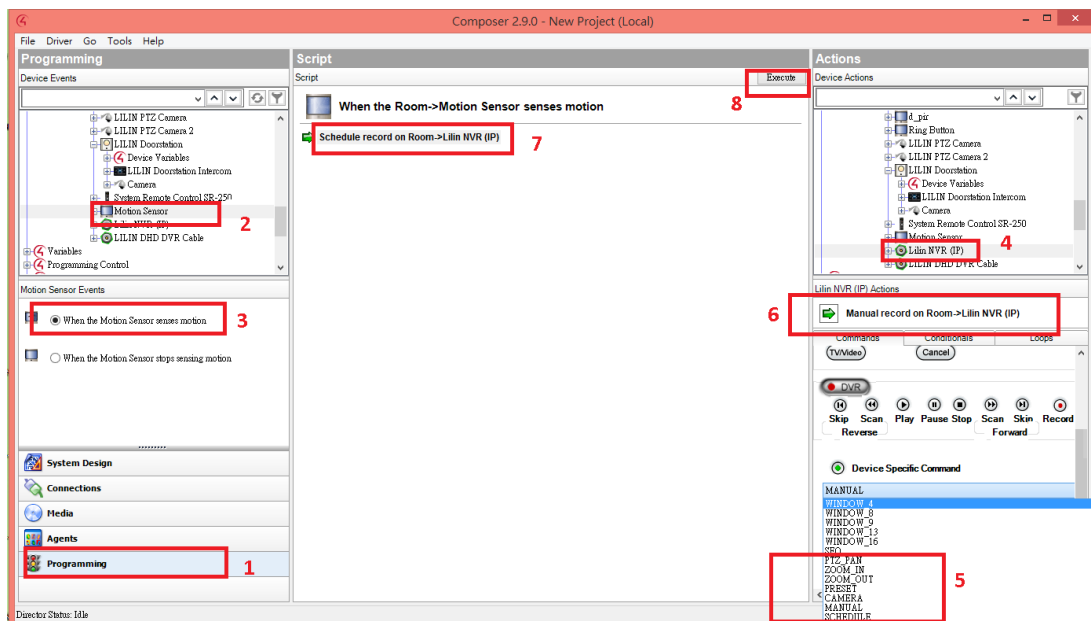
## Create a Connection between the IP Camera and Motion Sensor

- Click the 'Connections' icon and select an IP camera.
- Drag and drop the Motion Detection icon to Motion Sensor.




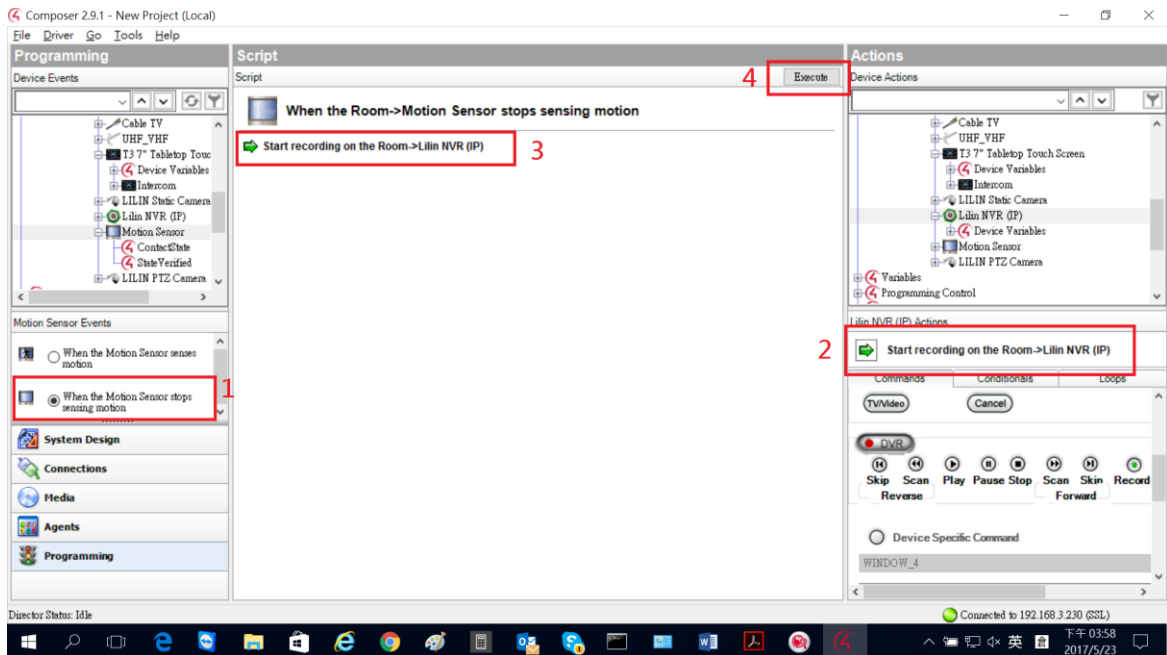
## Setup the NVR How to Start/Stop Recording via Control4

- Click the 'Programming' icon then select 'Motion Sensor' and chose 'When the Motion Sensor senses motion'.
- Select an NVR, and choose 'Record', then "Start recording on the Room->Lilin NVR(IP)" will show up.
- Drag and Drop  icon to the middle space.
- For verification purpose, you can click the 'Execute' button, and NVR will automatically switch the recording mode while a motion sensor is detected.





12. Choose when the Motion Sensor stops sensing motion and then Start recording on the Room->LILIN NVR(IP) will show up.
13. Drag and Drop  icon to the middle space.
14. Click the Execute button for verification purpose.
15. For a test, you can click the 'Execute' button, and NVR will automatically switch the recording mode while there is no motion activity.





**Contact**

Contact [lilin.zendesk.com](http://lilin.zendesk.com) for technical support.