



Merit LILIN Application Note

How to setup LILIN P2P NVR for Navigator Recorder or Navigator Client

Document Number : A00126

Date : 2017/06/21

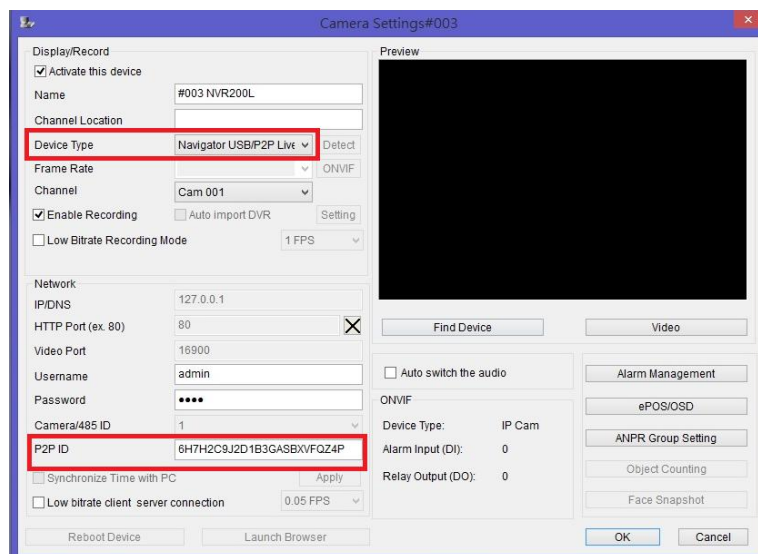
Dept : Technical Support, Taipei

Subject: How to setup LILIN P2P NVR for Navigator Enterprise, Corporate, Client, and Control Center.

1. Visit the web page of NVR to add the P2P account details. Network->Advanced->P2P Account.
You can copy and paste the key into NAV products.



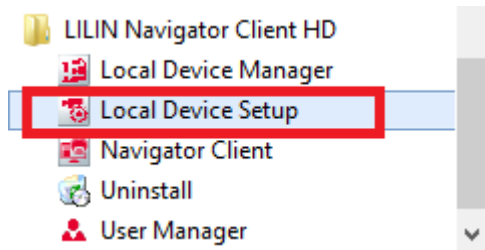
2. From the Navigator software, visit Camera Settings->Device Type and select Navigator USB/P2P Live if you use Navigator Enterprise or Corporate. Enter P2P ID from NVR's P2P Account.



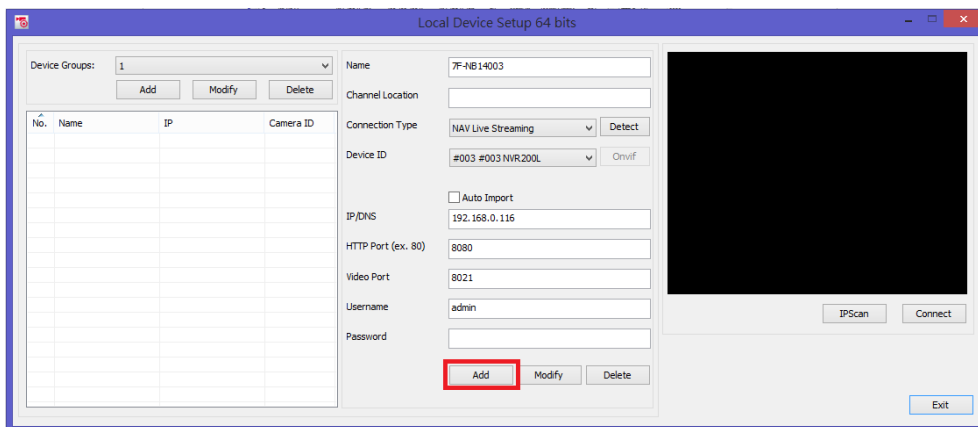


To use P2P with the LILIN Navigator Client or Control Center, please use Navigator Enterprise or Corporate as a relay server for LILIN Navigator Client and Control Center.

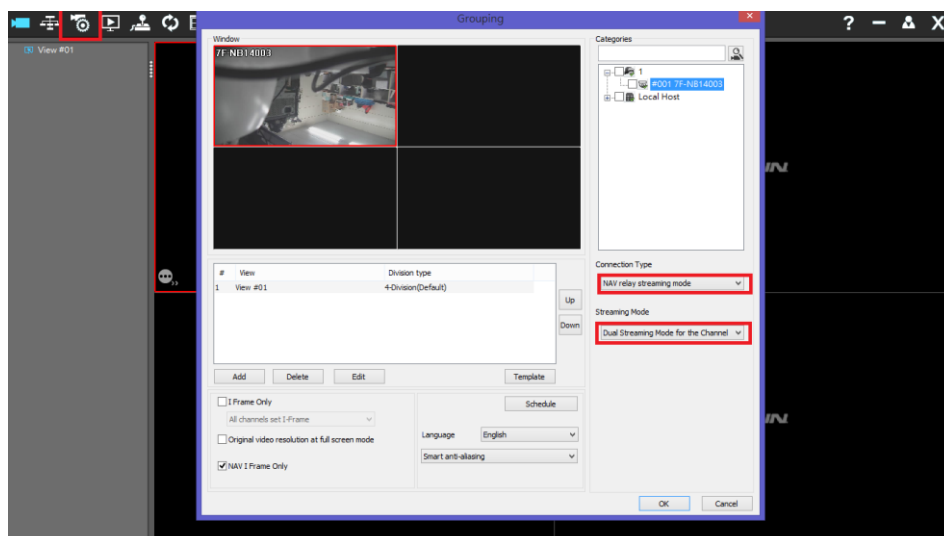
1. Visit Local Device Setup for adding the P2P NVR relayed from a Navigator Enterprise or Corporate if you use Navigator Client or Navigator Control Center.



2. Add the camera stream of Navigator Enterprise or Corporate for LILIN P2P NVR into a Device Groups.

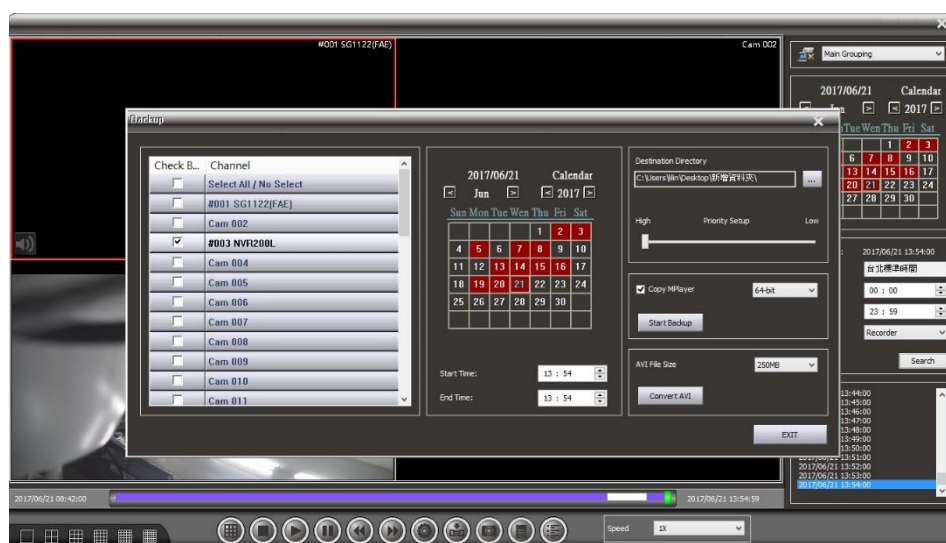
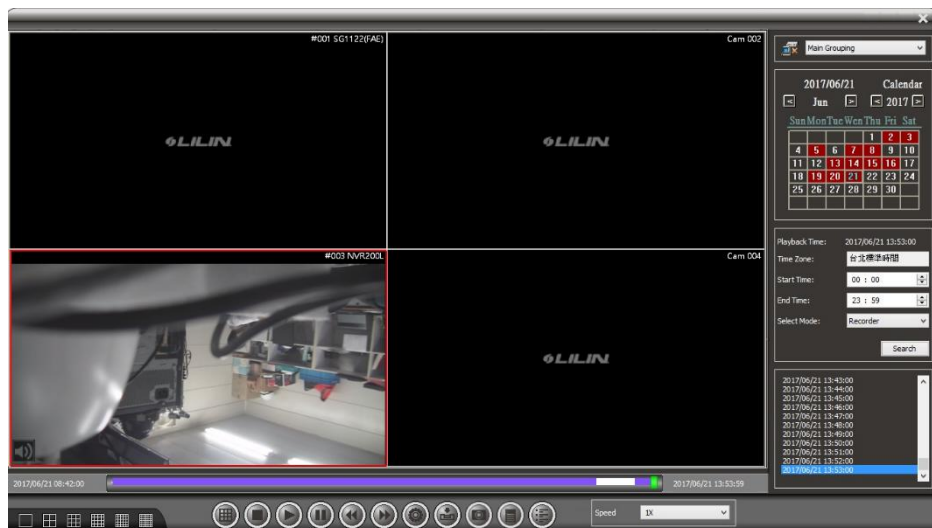
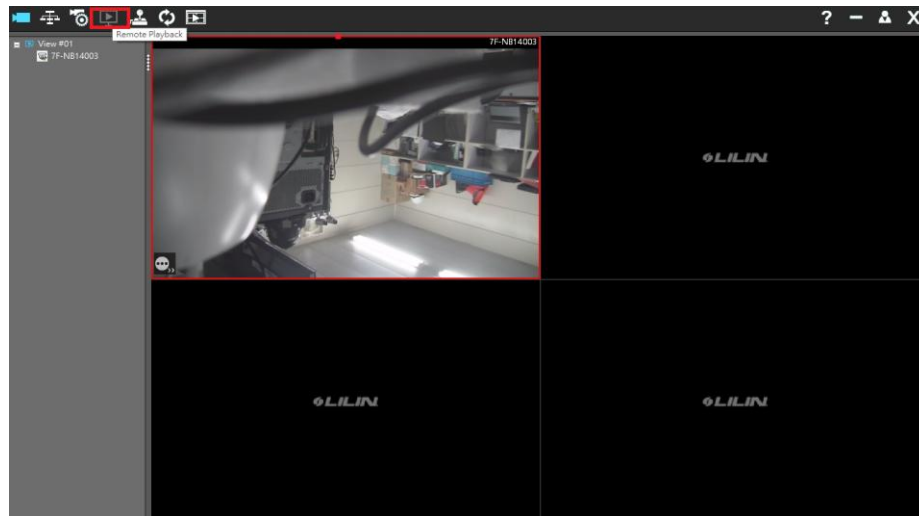


3. Once the camera stream of the Navigator Enterprise or Corporate is added, you can drag-n-drop the camera stream into Navigator Client.





- Click Remote Playback. You are able to playback and to download the video from Navigator Enterprise or Corporate.



Contact

Contact lilin.zendesk.com for technical support.