

LILIN NVR with LILIN AI Camera Prohibited Zone Detection Guide

Human Detection in a Prohibited Zone Detection

To add your AI camera to your LILIN NVR to detect and log AI events in Prohibited Zones, follow the steps below.

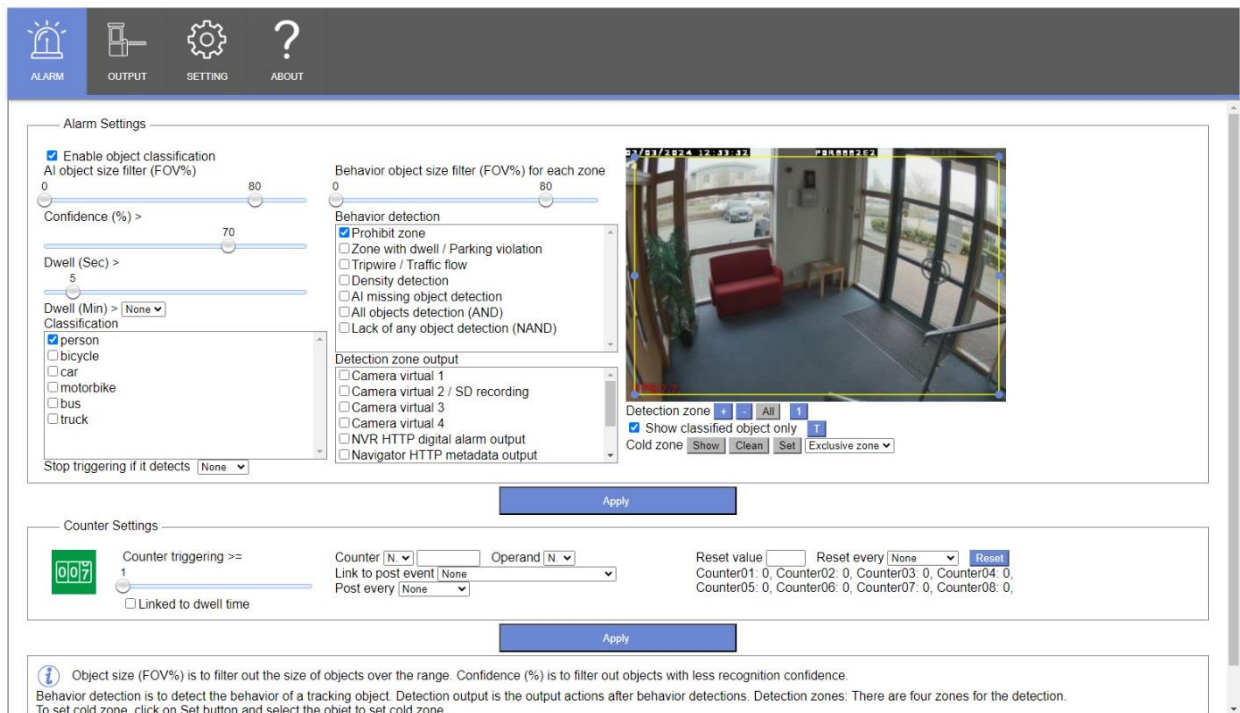
AI Camera

Login to your AI camera and select the AI module icon. This will ask you to login to the camera's AI module. Enter the camera's administrator username and password.

Select 'Alarm' from the top bar.

This screen is where you will configure the desired AI behaviour and AI classifications that will trigger an event to an NVR.

In the example below the camera is set to log when a person enters the designated zone.



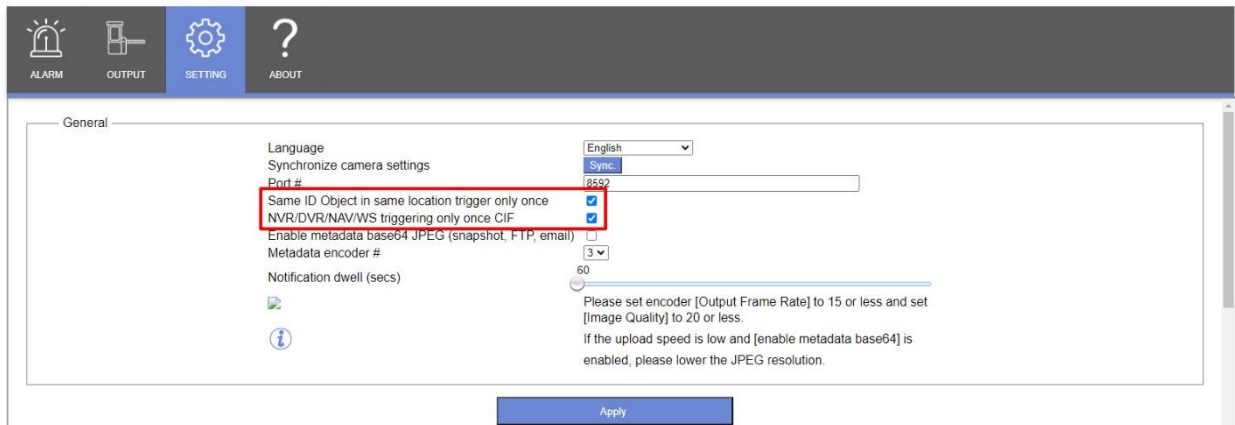
You can set up to 4 different AI zones with different behaviours and classifications.

Next select 'Settings' from the top menu bar.

Within this menu, ensure you have the following ticked:

Same ID Object in same location trigger only once

NVR/DVR/NAV/WS triggering only once CIF



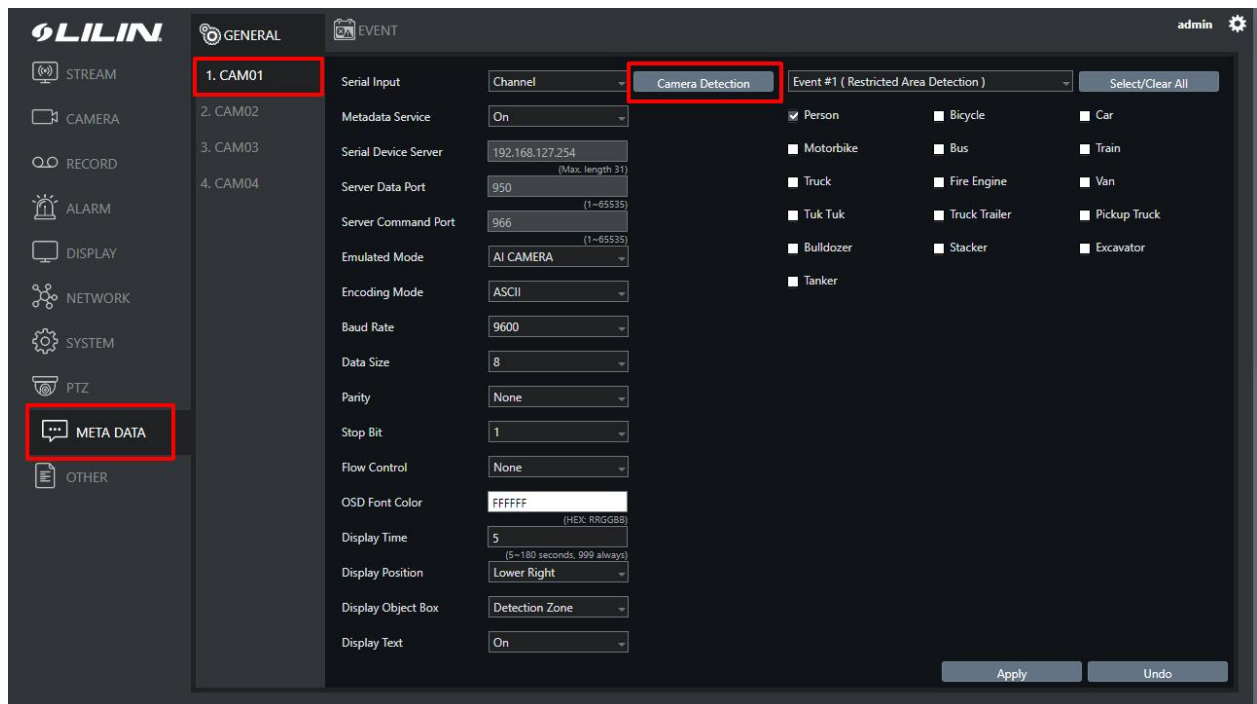
For a basic configuration, these should be the only options to change on this menu.

NVR

Next log in to the NVR (this guide assumes the camera has already been added to the NVR).

Once logged in to the NVR, select 'Meta Data' and select the channel your AI camera has been added to.

Once selected click the 'Camera Detection' button. This will talk to the camera and automatically match the detection classifications to what has been enabled on the camera.



There are some options at the bottom of the page that will change how AI objects are displayed on the NVR.

You have the option Display Object Box:

Object Box

Detection Zone

Object Box / Detection Zone

Enabling object box means that an object box (coloured square) is displayed around the classified object once they enter the detection zone.

Enabling Detection Zone means the camera will display the detection zone set from within the camera over the video displayed on the NVR. (None of these options are shown when a video backup is taken.)

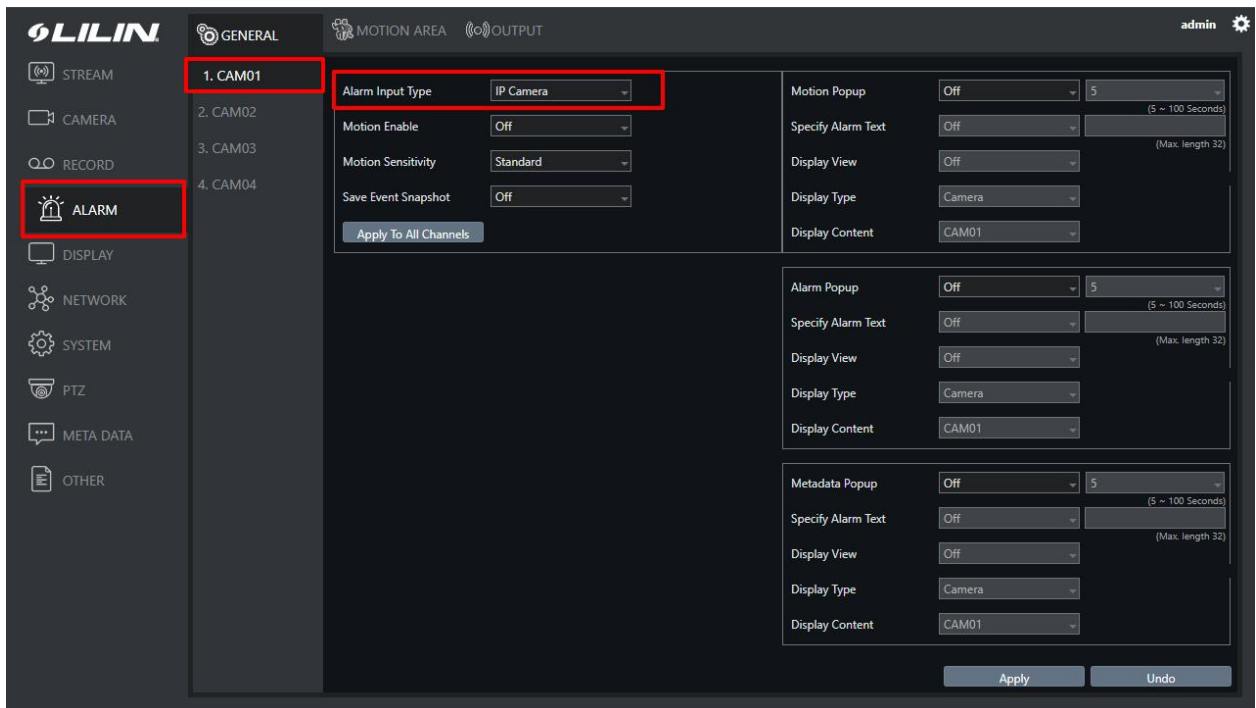
Enabling Object Box / Detection Zone simply means both are enabled and visible.

Click Apply.

(Please note that enabling Object Box or Detection Zone will cause the NVR to use more resources and may impact performance)

Next, select the 'Alarm' menu and select the channel your AI camera has been added to.

Next turn 'Alarm Input Type' to 'IP Camera' and click Apply.



Your camera is now logging AI events to the NVR.

Alert Outputs

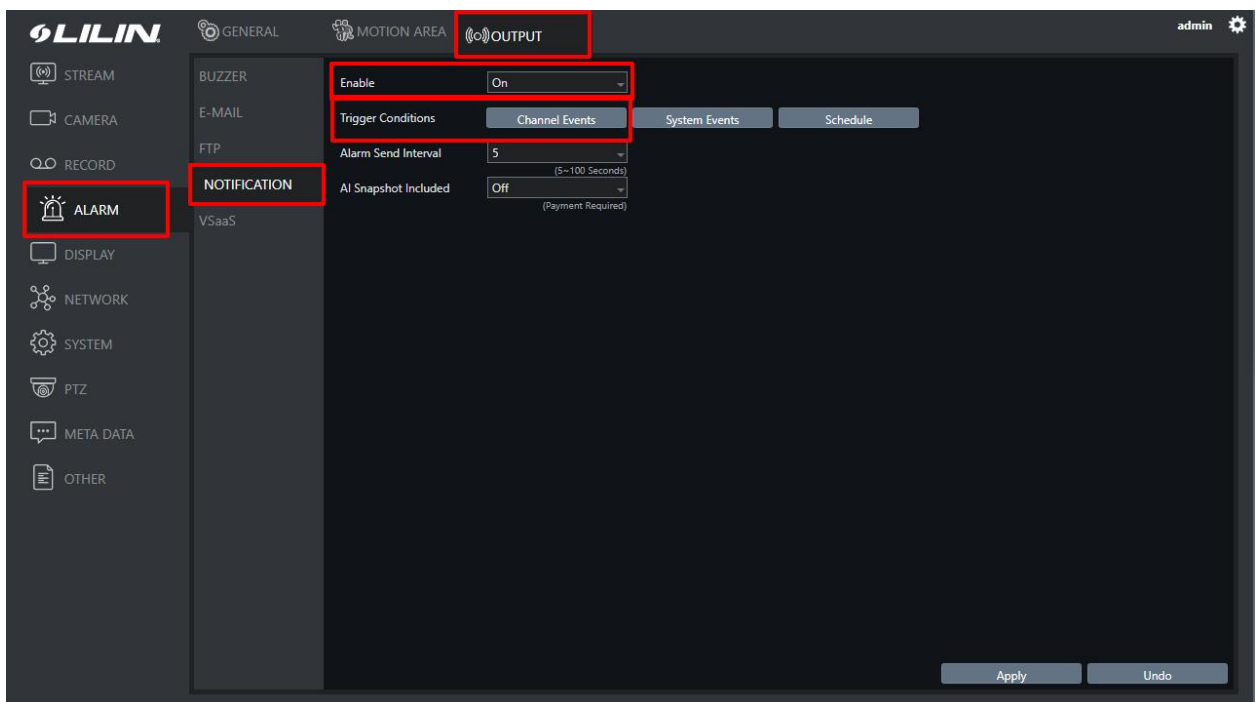
This can include Email, Buzzer and Push Notifications alerts (In this guide we will cover push notification configurations)

To enable push notifications for detected AI events, select 'Alarm' from the NVR menu.

Select the 'Output' tab from the top menu bar.

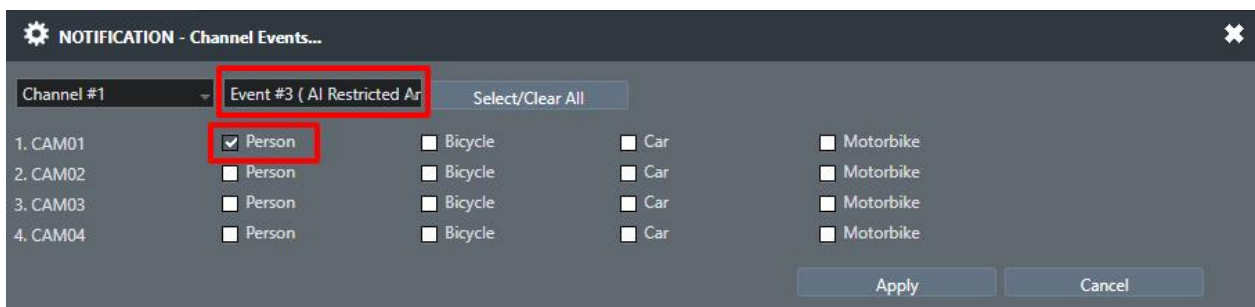
Next select 'Notification' from the sub menu bar.

Turn 'Enable' to On and click the 'Channel Events' button.



From the Events dropdown select 'Event 3 (AI Restricted Area)' and tick 'Person' (we select person because this is the classification set on the AI camera module)

The click Apply.



If a mobile app already has the NVR configured within it and the app is set to receive 'Alarm Events' you will start to receive push notifications when an AI event is triggered.

Enabling push notifications will also enable the 'Events' option on the LILINPro app. This is a list of previous events on the NVR.