

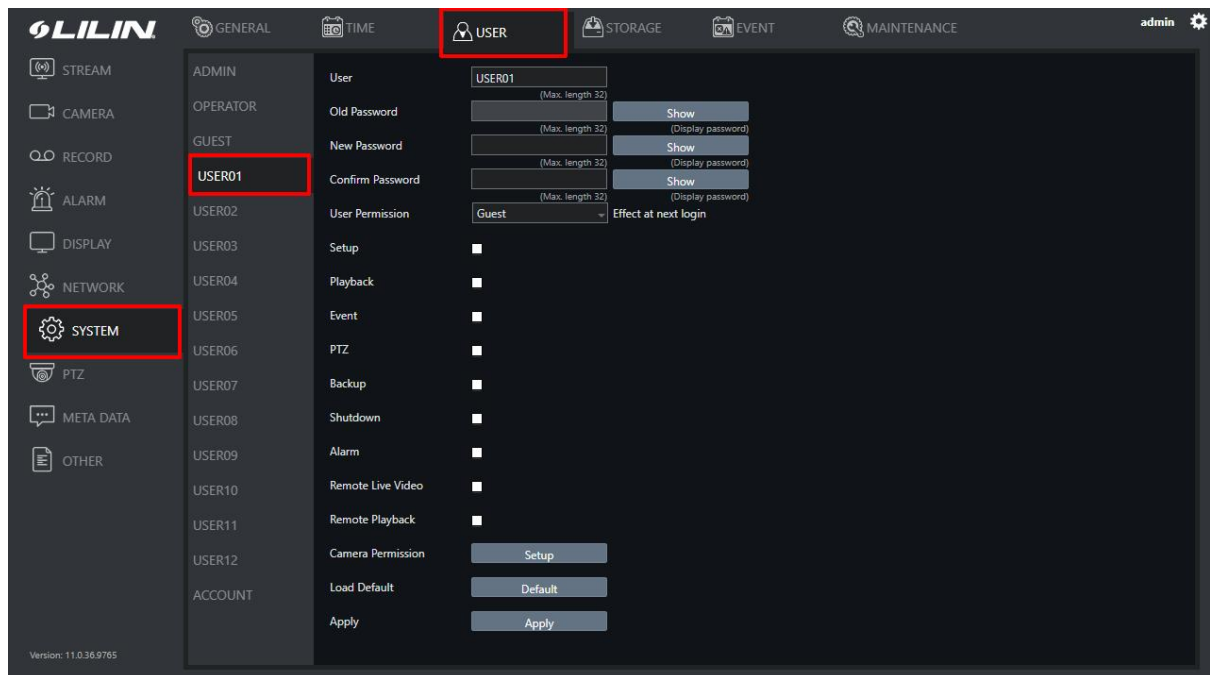
Add a new user to a LILIN NVR

How to add a sub user to a LILIN NVR

If you would like to create a new or custom user for your NVR, follow the guide below.

The guide will show how configure a custom user and how to stop users accessing certain cameras on the system in both Live and Playback.

Log in to the NVR and go to System → Users. Select the user account you want to configure from the bar on the left. In this guide we will select USER01.

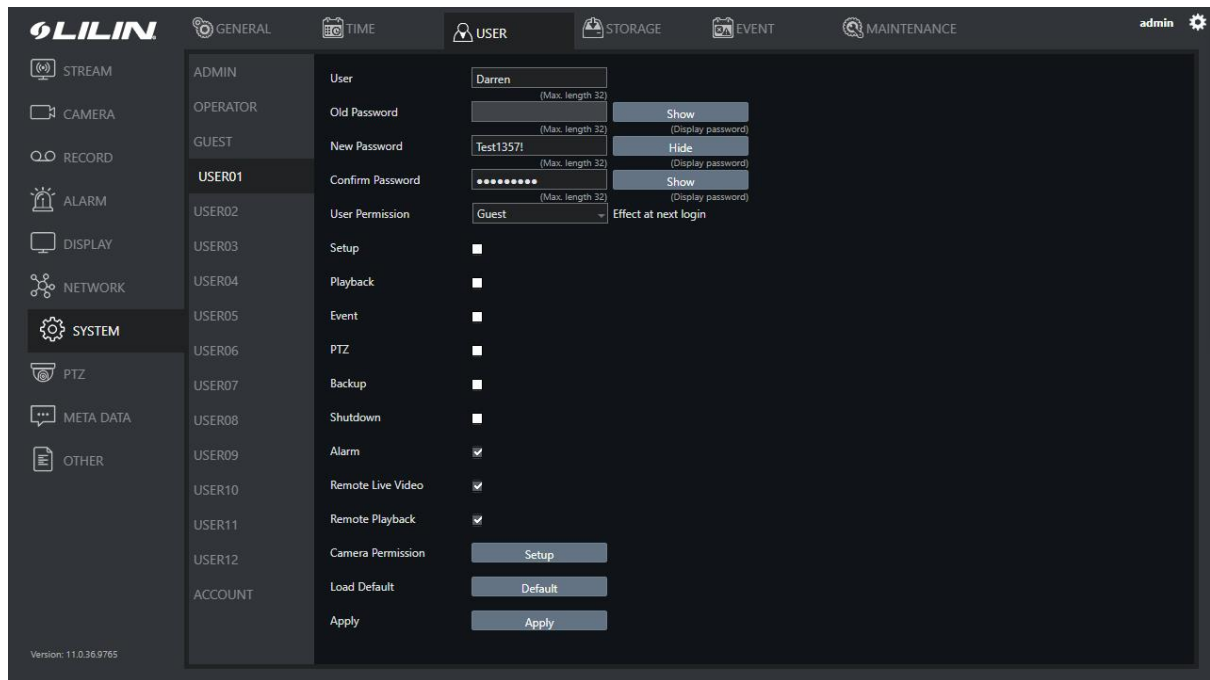


The first step will be to change the username and enter a password for the user and confirm the password. You will then need to select the user permissions level. The choice is Admin, Operator or Guest.

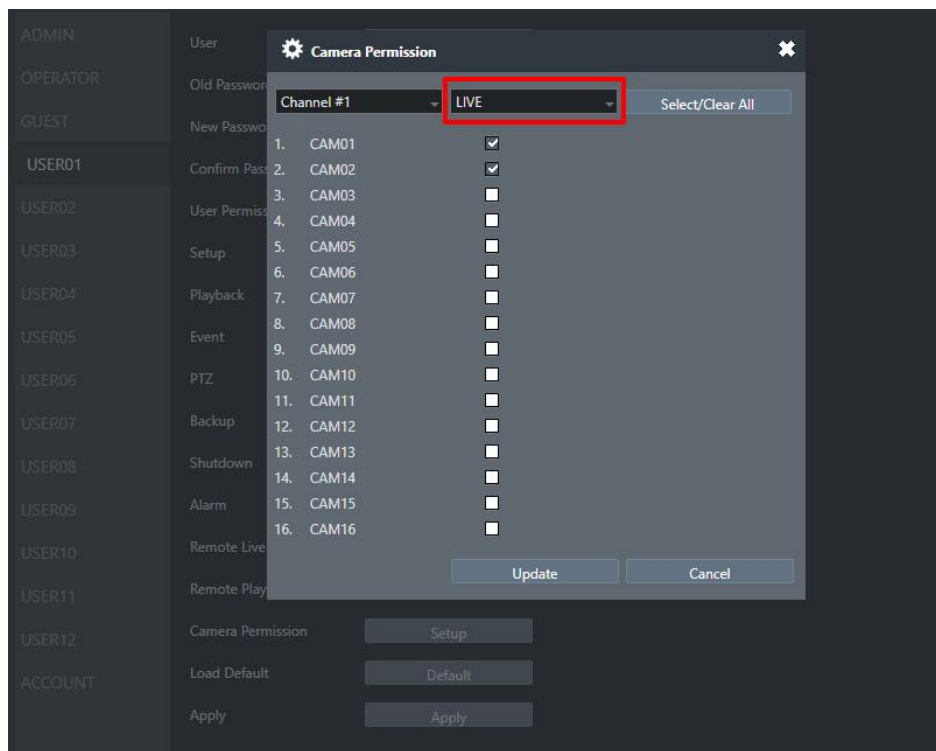
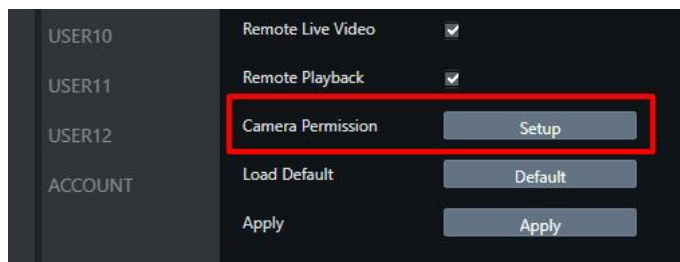
In this guide we will select Guest.

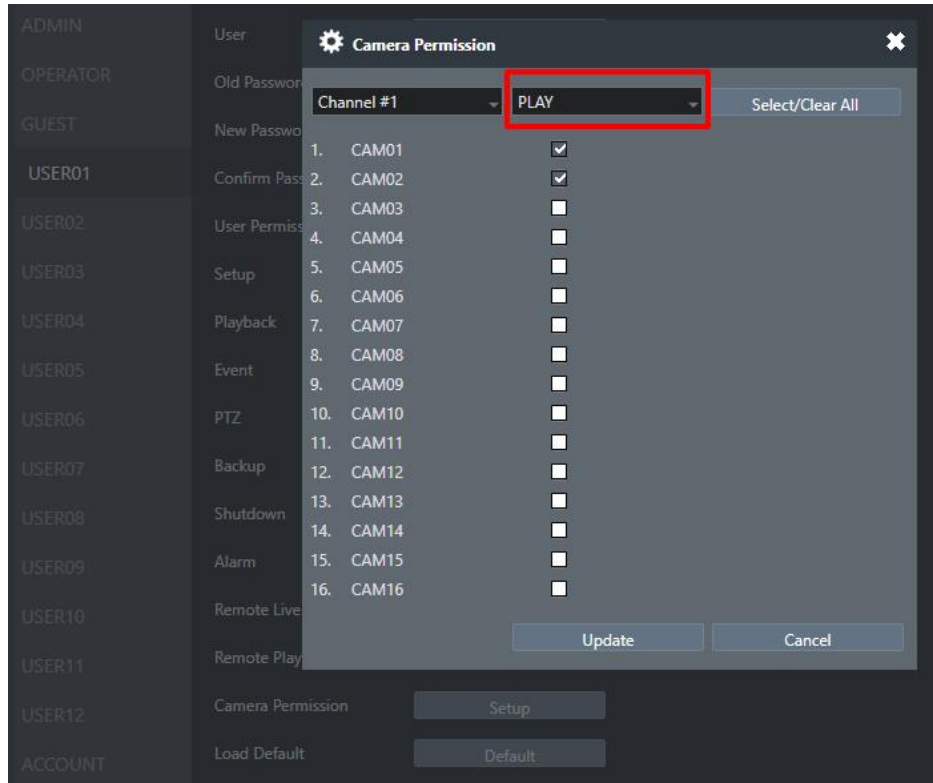
Now select which features you want the user to be able to have. This includes things like access to the NVR setup menu, ability to backup video etc.

In the example below the user will be able to access the NVR via a web browser or mobile app and only be able to see Live Video and Playback.

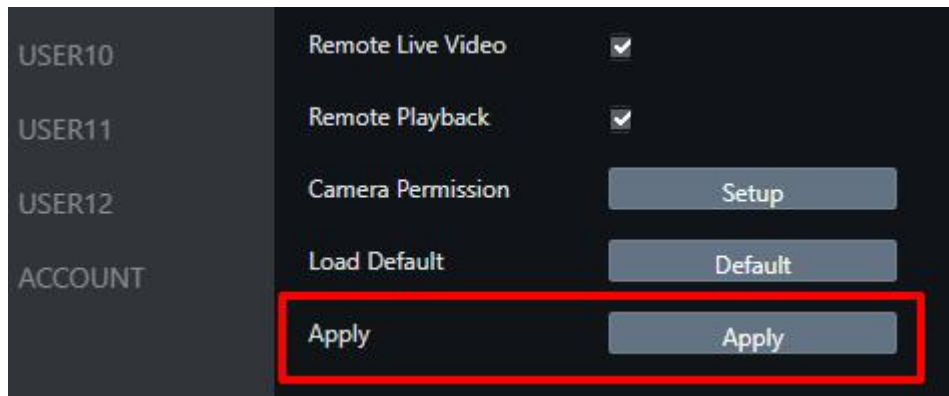


Next select 'Camera Permissions'. Here you can allow or deny access to specific cameras on the system. This is possible for both Live and Playback.



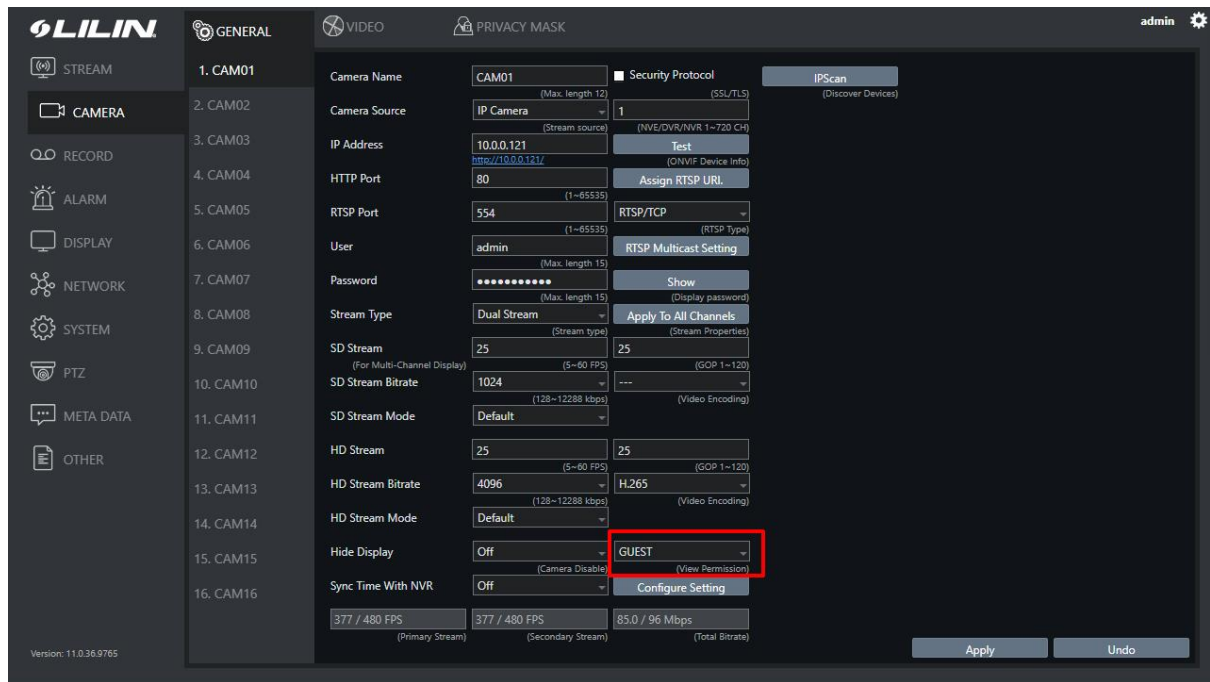


Now click Update on the camera permission window and then Apply on the user menu. This will save these settings.



Now you will need to make an adjustment on each camera menu you would like the user to access.

Select 'Camera' and then select the first camera the user will be able to access and ensure the 'View Permissions' option in the image below is set to Guest. If you do not set this to guest, you will not be able to see a live image from the camera.



The screenshot shows the LILIN web interface with the 'GENERAL' tab selected. The 'Security Protocol' section is highlighted with a red box, indicating the user setup. The 'User' dropdown is set to 'GUEST', and the 'View Permission' link is visible below it. The 'Configure Setting' button is also present.

Repeat this step for all cameras.

Your user setup is now complete, and the new user should only have access to what you have allowed.