

LILIN AI Plugin Behaviour Guide

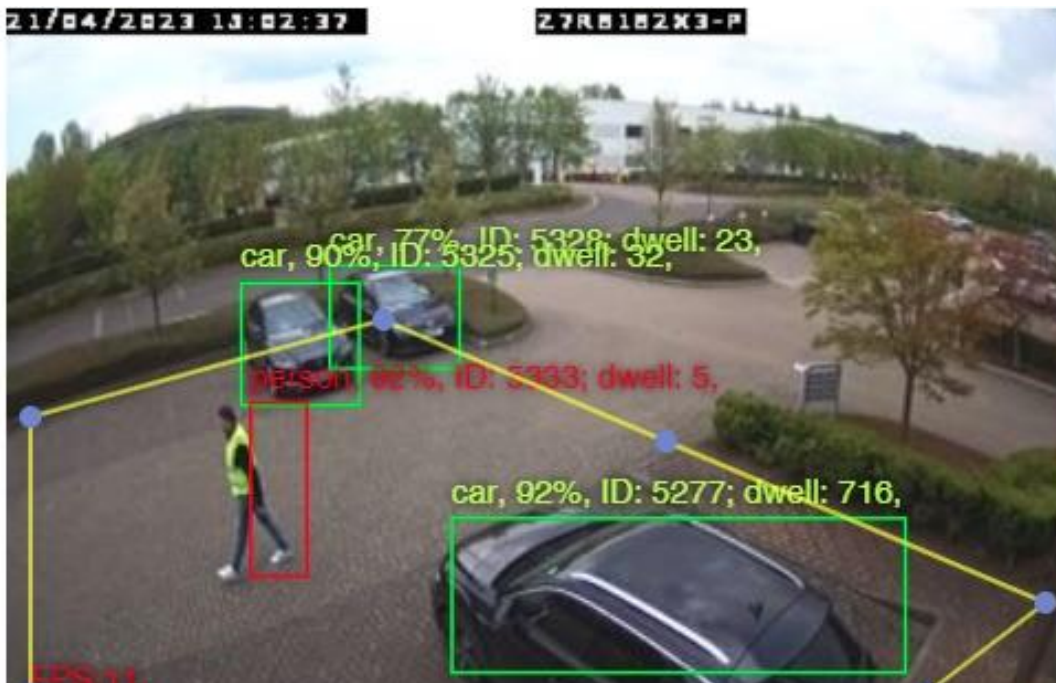
LILIN AI cameras come with different behaviour triggers. These include: (Depending on AI Licence)

- Prohibit Zone
- Zone with Dwell / Parking Violation
- Tripwire / Traffic Detection
- Density Detection
- AI Missing Object detection
- All Objects Detection (AND)
- Lack of any Object (NAND)
- LPR Allowed List Detection in Zone
- LPR Denial List Detection in Zone
- LPR Visitor List Detection in Zone

For this guide it is presumed you already have selected classification and understand the filter size options.

Note: Detected objects appear with green text, once the alarm is triggered, they turn red.

Prohibit Zone



This is triggered when a selected object/classification enters the zone or moves around within the zone. In this example person was the selected object/classification.

Zone with Dwell



This is triggered when the selected object/classification is in the zone for longer than the dwell time. In this example it was a person for more than 10 seconds

Tripwire/traffic Flow



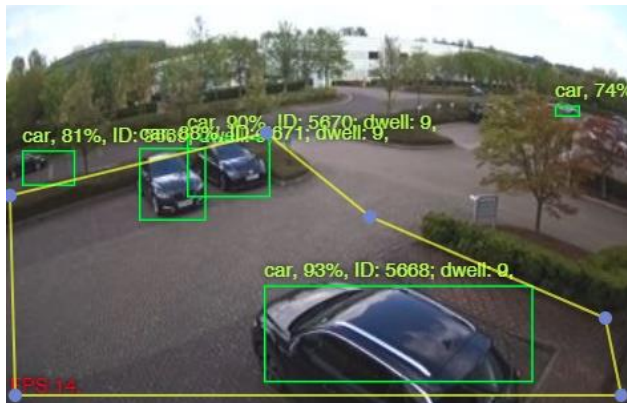
This is triggered when the chosen object/classification crosses the tripwire in the chosen direction. In this example it is a person walking from the right to left.

AI Missing Object Detection



This is triggered when the chosen object/classification is not in the target area. In this example the zone turns red as there is no person in the scene.

All Objects Detection (AND)



Classification

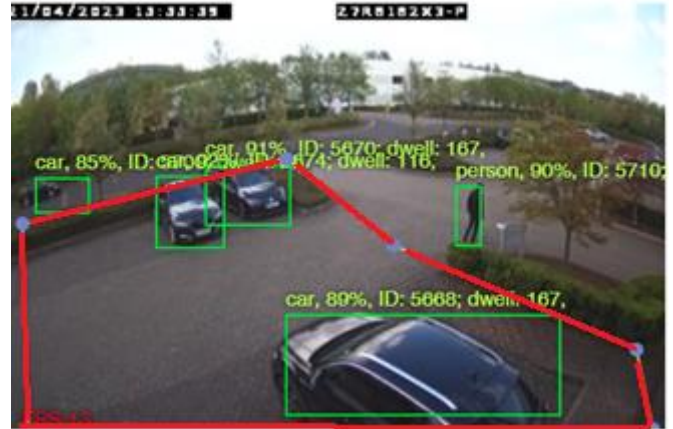
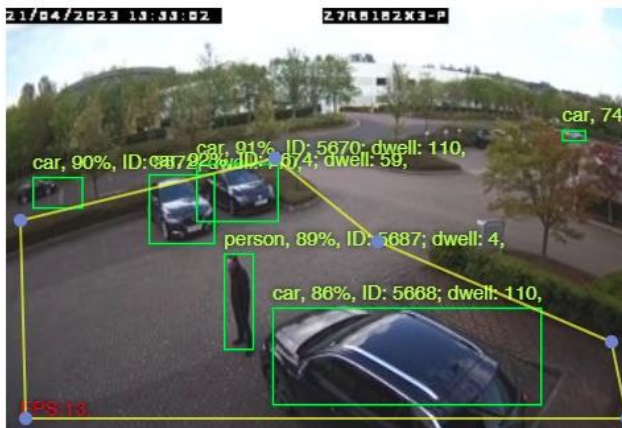
- person
- bicycle
- car
- motorbike
- bus
- train
- truck
- fire_engine
- van
- tuktuk

Stop triggering if it detects None

This is triggered when all the selected objects/classifications appear in the target zone.

In the example above we have person & cars selected as objects/classifications so whilst only 1 of those objects/classifications is in the zone there is no alarm, once both objects/classifications are in zone an alarm/event is created.

Lack of any Object Detection (NAND)



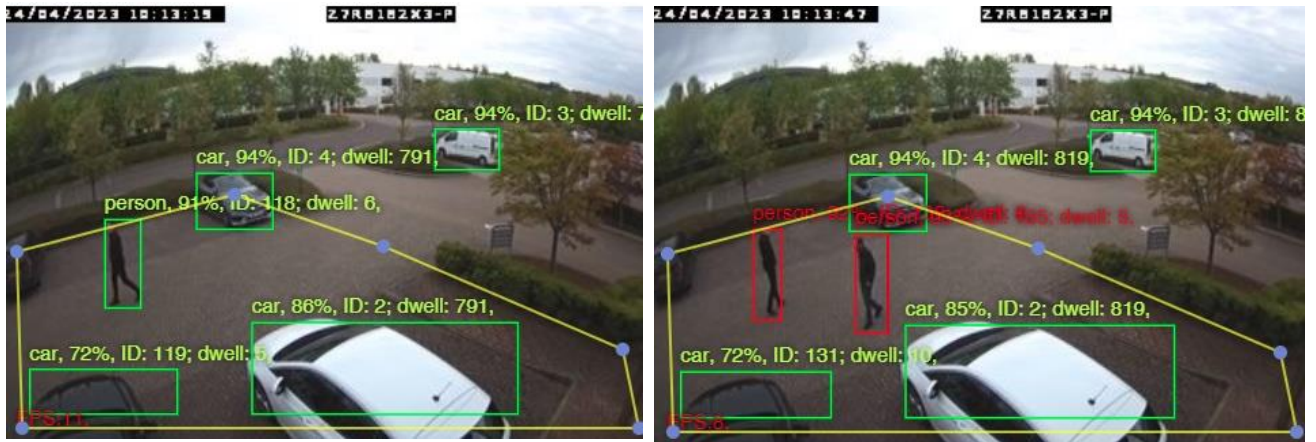
Classification

- person
- bicycle
- car
- motorbike
- bus
- train
- truck
- fire_engine
- van
- tuktuk

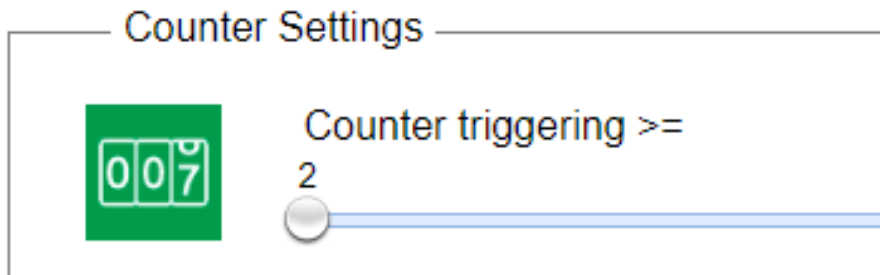
Stop triggering if it detects

This is triggered when all the selected objects/classifications do not appear in the target zone.

In the example above we have person & cars selected as objects/classifications so whilst both of those objects/classifications are in the zone there is no alarm. Once one objects/classifications leaves the zone an alarm/event is created.



Density Detection (only available on EDGECAP, and 8MP AI Cameras)




This is triggered when selected object/classification enter the target zone and the object/count in the zone is also equal too or greater than the set counter triggering number.


In the example above a person enters the zone but does not create an alarm/event as the counter setting is 2. Once a 2nd person enters the scene an alarm/event is created.


LPR Allowed List Detection in Zone, LPR Denial List Detection in Zone, LPR Visitor List Detection in Zone





This is triggered when a vehicle enters the target area. If LPR allowed is selected then for an alarm/event the number plate must be in the cameras allowed plate list



LPR LIST


ALARM


OUTPUT


EST. SPEED


SETTING


ABOUT

Log List
Denial List
Allowed List
Visitor List

Note: THA: Province Name, BGD: City and Class

Select All

License Plate	User	Start Time	End Time
<input type="checkbox"/> YK16GFY	Matt	0 : 0	23 : 59

The same applies for denied. Any plate that is not in allowed or denied lists will be classified as a Visitor, to trigger visitor alarm/event the Behaviour Detection needs to be set to LPR Visitor List Detection in Zone