



Merit LILIN NVR RTSP Streaming Document

Date: 11/09/2014
Dept: Technical Support, Taipei

Subject: How to use LILIN RTSP H.264 streams for various RTSP clients of LILIN NVR.

Protocol Supported:

RTSP over HTTP at 80 port, RTSP over TCP at 554 port, RTSP over UDP at 554 port

Product Supported:

NVR116, NVR109, NVR104, NVR404, NVR408m, NVR100, NVR200, NVR400, NVR1400, NVR2400

Firmware Requirement:

NVR Firmware 1.1.58 and later can support RTSP stream for NVR

1.0 NVR H.264 RTSP Video & Audio Streaming

To test NVR H.264 streams via RTP/RTSP/HTTP, you can verify the streams by using QuickTime or VLC. The stream contains both video and audio if the IP camera contains audio signal.

2.0 NVR H.264 RTSP Live Syntax

Syntax:

```
rtsp://<user>:<password>@<IP address>:<port>/rtspsteam?channel=<ch>&stream=<pri/sec>
```

Example of retrieving channel #2's primary (SD) stream:

<rtsp://admin:1111@192.168.3.243/rtspsteam?channel=1&stream=1>

Example of retrieving channel #2's secondary (HD) stream:

<rtsp://admin:1111@192.168.3.243/rtspsteam?channel=1&stream=1>

Parameters:

Parameter	Values	Description
user	String	User name of the NVR
password	String	Password of the NVR
IP address	String	IP address of the NVR
port	Number	Port number of the NVR
ch	Number	Channel # 0~15 of the NVR
stream	Number	1: primary stream (SD), 2: secondary stream (HD)

2.0.1 NVR H.264 RTSP Playback Syntax

Syntax:

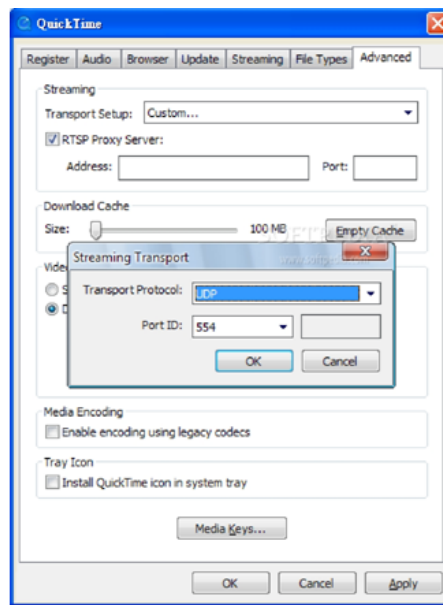
```
rtsp://<user>:<password>@<IP address>:<port>/rtspsteam?channel=<ch>&stream=<pri/sec>&playback=<date>
```

Parameter	Values	Description
date	String	YYYYMMDD-hhmmss YYYY: year, e.g. 2015

		MM: month DD: date hh: hour mm: minute ss: second
--	--	---

3.0 RTSP Streaming via QuickTime

To test RTP/RTSP/HTTP, please click on QuickTime->Edit->Preference. Click on Preference->Transport Setup->Custom. Change the protocol to TCP and make sure the port ID is 554.



4.0 RTSP Streaming via VLC

Click on Media->Open Network Stream. Enter the RTSP URL at Network Protocol box and click Play button.

