

Merit LILIN Application Note

How to Use Text Overlay Feature in CMX

Document Number : A00035

Date : 10/15/2013

Dept : Technical Support, Taipei

Subject: LILIN CMX Software HD 3.6 can now support text overlay feature for users to enter text for later superimpose the snapshot with the text and search the text for video.

Application: reception registration application and vehicle registration systems

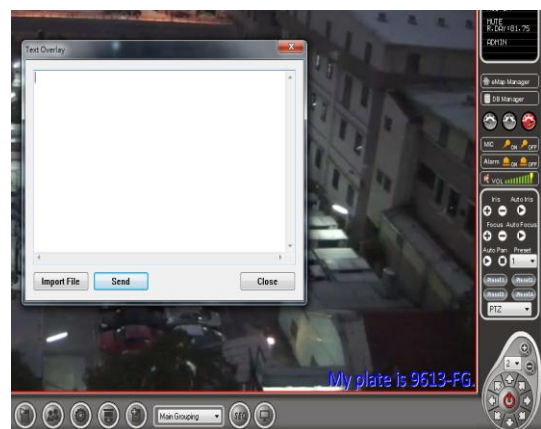
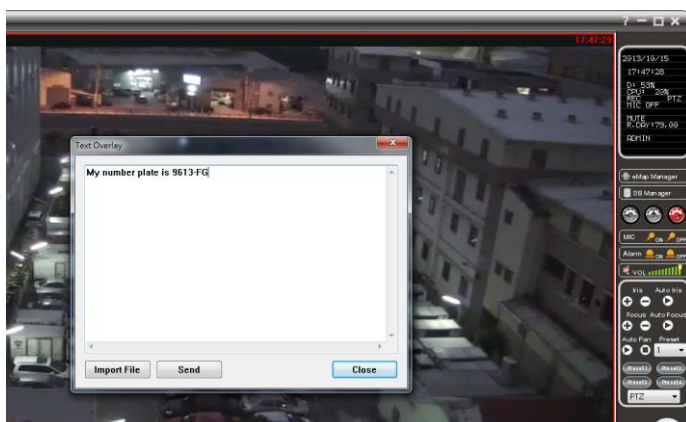
Step #1:

Right mouse click and select Text Overlay feature on the channel.



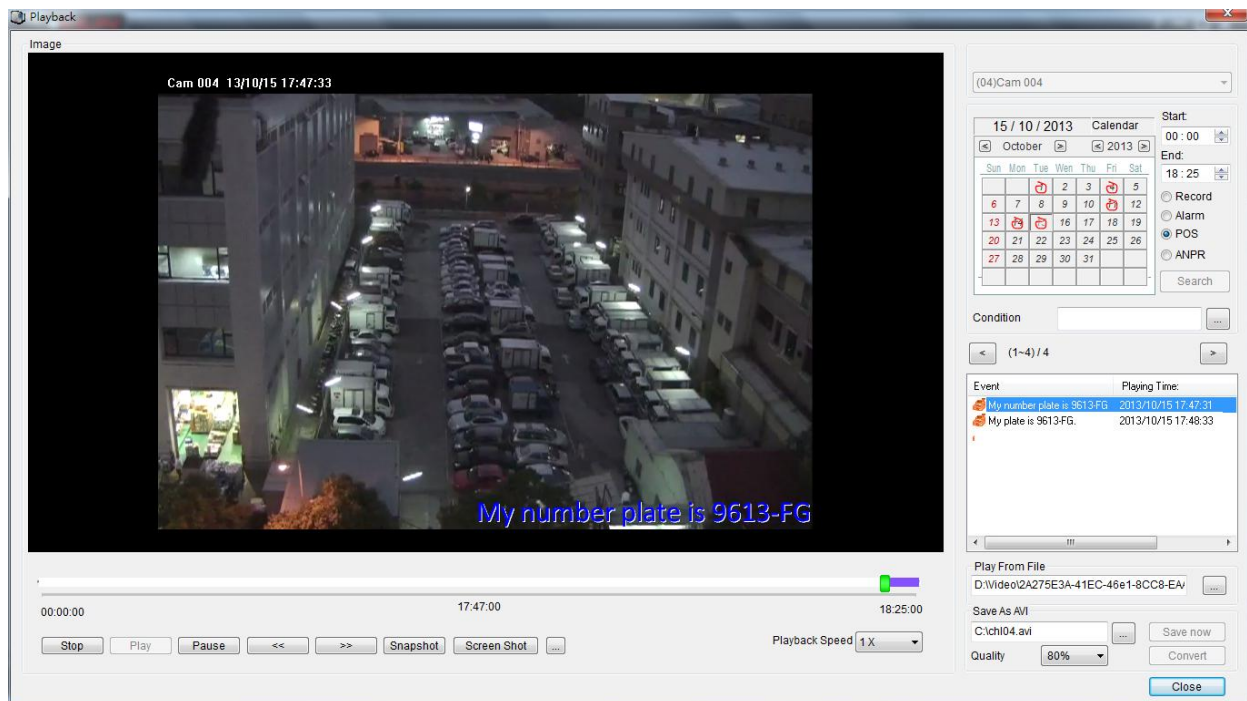
Step #2:

Enter guest information or license plate information for later searching the video or exporting snapshot with the information. The text is stored into database and displayed on the video.



Step #3:

During playback, select POS option. The text is superimposed on the video for snapshot or video exporting purpose.



Step #4:

Click on Screen Shot button. Guest or license plate information can be displayed on the picture.

