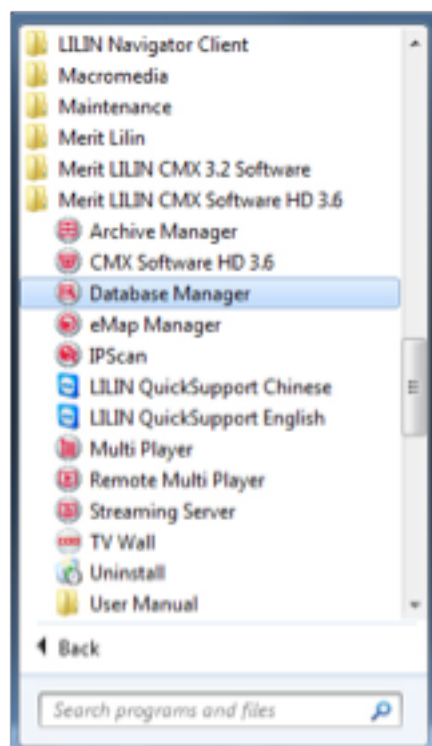
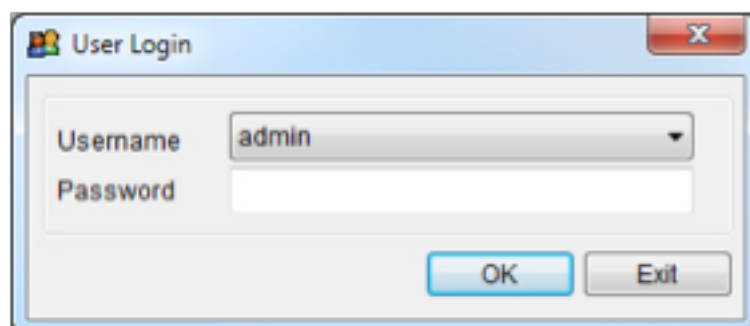


Export ANPR Detection Event List

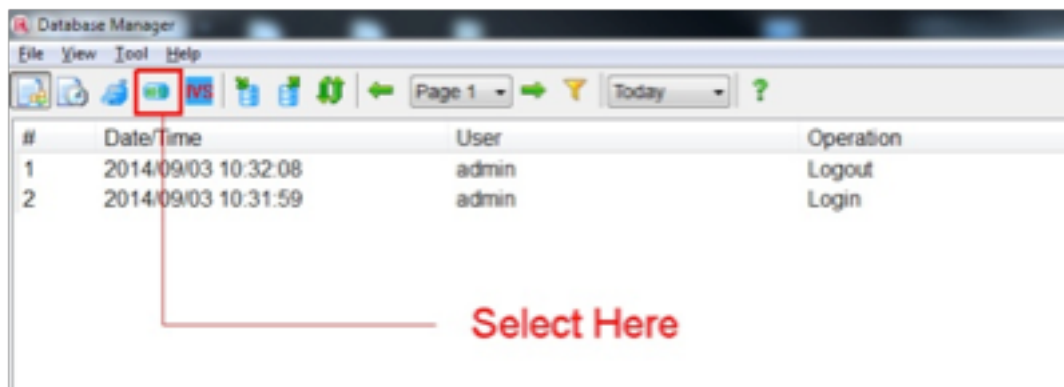
This process is achieved using the LILIN CMX/Navigator 'Database Manager'.
Click 'Start' --> All Programs --> Merit LILIN CMX/Navigator --> DB Manager.



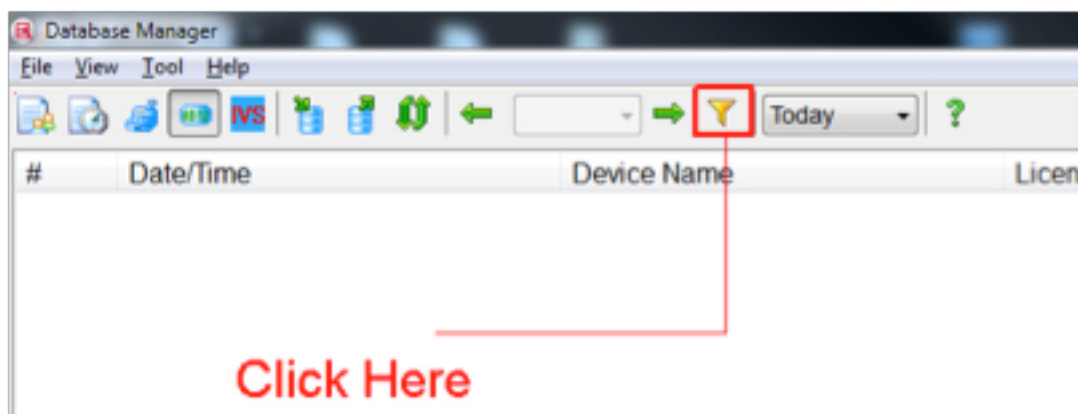
DB Manager will now open. Please log in to DB Manager using one of the username and passwords used to access the main CMX software.



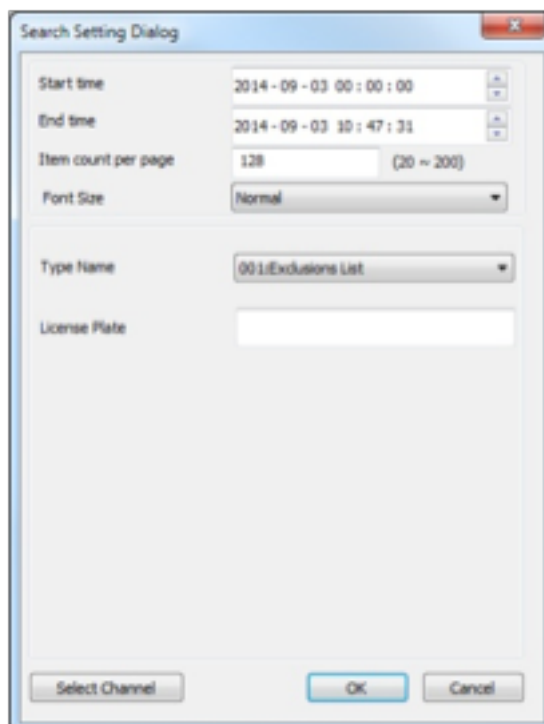
Once open, select the 'AB12' icon in the top bar.



The screen will now change, next select the funnel icon



This will bring up a search screen. Amend the relevant details required for your search and select ok



Search Setting Dialog

Start time: 2014-09-03 00:00:00

End time: 2014-09-03 10:47:31

Item count per page: 128 (20 ~ 200)

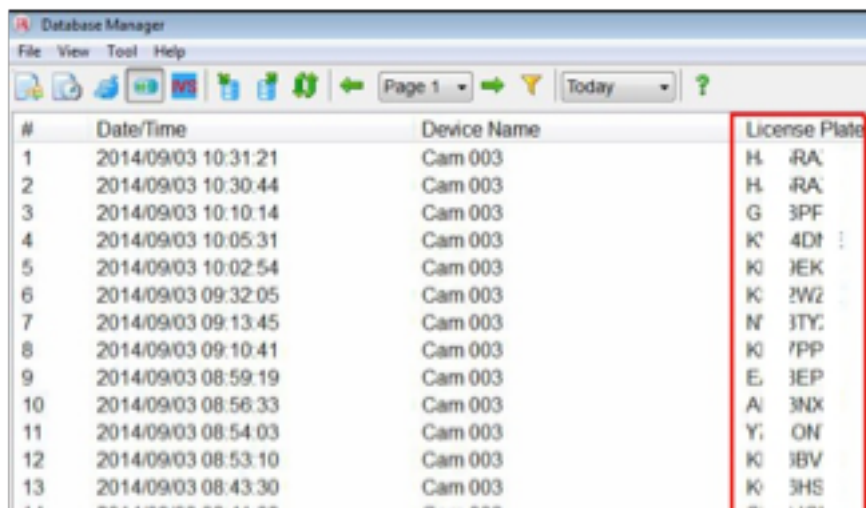
Font Size: Normal

Type Name: 001:Exclusions List

License Plate:

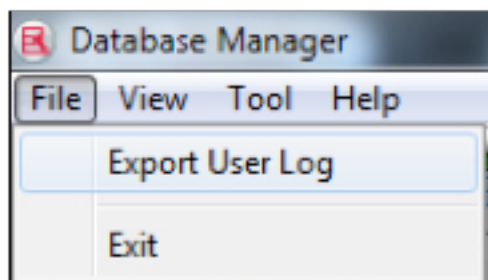
Select Channel OK Cancel

This will now display the results relevant for the search for the terms entered above. The results are displayed as below.



#	Date/Time	Device Name	License Plate
1	2014/09/03 10:31:21	Cam 003	H 4RA
2	2014/09/03 10:30:44	Cam 003	H 4RA
3	2014/09/03 10:10:14	Cam 003	G 3PF
4	2014/09/03 10:05:31	Cam 003	K 4Dt
5	2014/09/03 10:02:54	Cam 003	K 3EK
6	2014/09/03 09:32:05	Cam 003	K 2W2
7	2014/09/03 09:13:45	Cam 003	N 3TY
8	2014/09/03 09:10:41	Cam 003	K 7PP
9	2014/09/03 08:59:19	Cam 003	E 3EP
10	2014/09/03 08:56:33	Cam 003	A 3NX
11	2014/09/03 08:54:03	Cam 003	Y 3ON
12	2014/09/03 08:53:10	Cam 003	K 3BV
13	2014/09/03 08:43:30	Cam 003	K 3HS

To export the results from the search, select 'file' from the top bar and then export.



This will export the results of the search in a .CSV file.
Once exported to a .CSV the file can be printed, edit or whatever is required with the data.