

Release Note for LILIN CMX

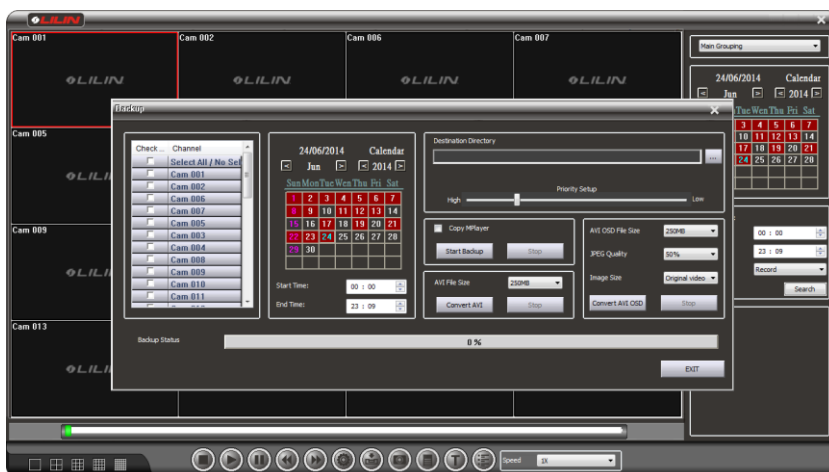
LILIN CMX 3.6.2.66 is now available on [LILIN Download Center](#).

Version 3.6.2.66, 2013/05/26

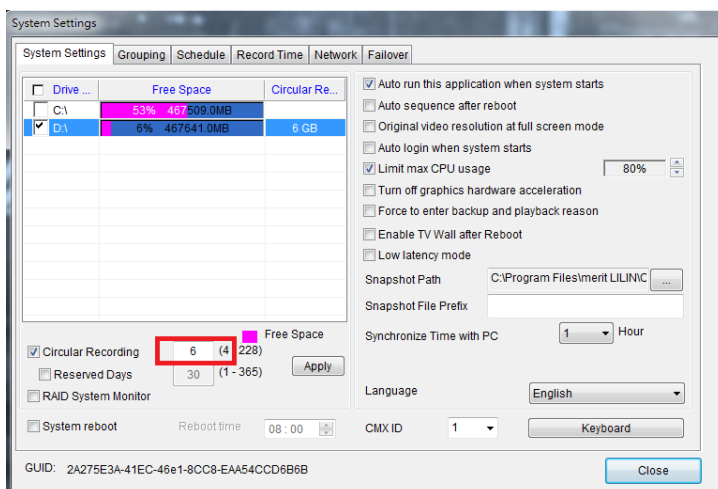
1. Support DatabaseManager for bigger font (#1766, #1765). Click on the Filter tool button at DatabaseManager.

#	Date/Time	User	Operation
1	2014/06/24 23:08:55	admin	Connect Failed Cam 009
2	2014/06/24 23:08:38	admin	Connect Failed Cam 001
3	2014/06/24 23:08:09	admin	Live reconnect on Cam 009
4	2014/06/24 23:07:49	admin	Live reconnect on Cam 001
5	2014/06/24 23:07:24	admin	Connect Failed Cam 009
6	2014/06/24 23:07:04	admin	Connect Failed Cam 001
7	2014/06/24 23:06:37	admin	Live reconnect on Cam 009
8	2014/06/24 23:06:15	admin	Live reconnect on Cam 001

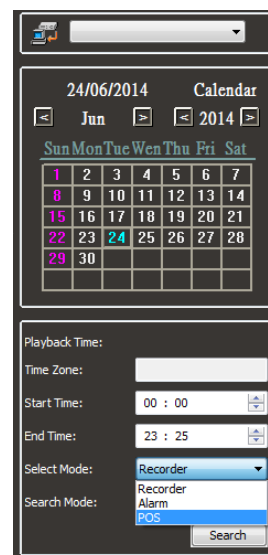
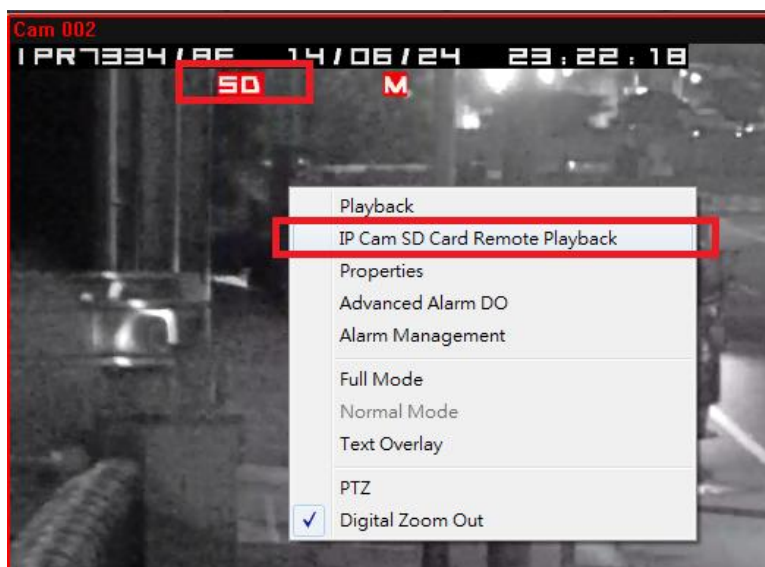
2. Support MultiPlayback.ext to export to AVI file.



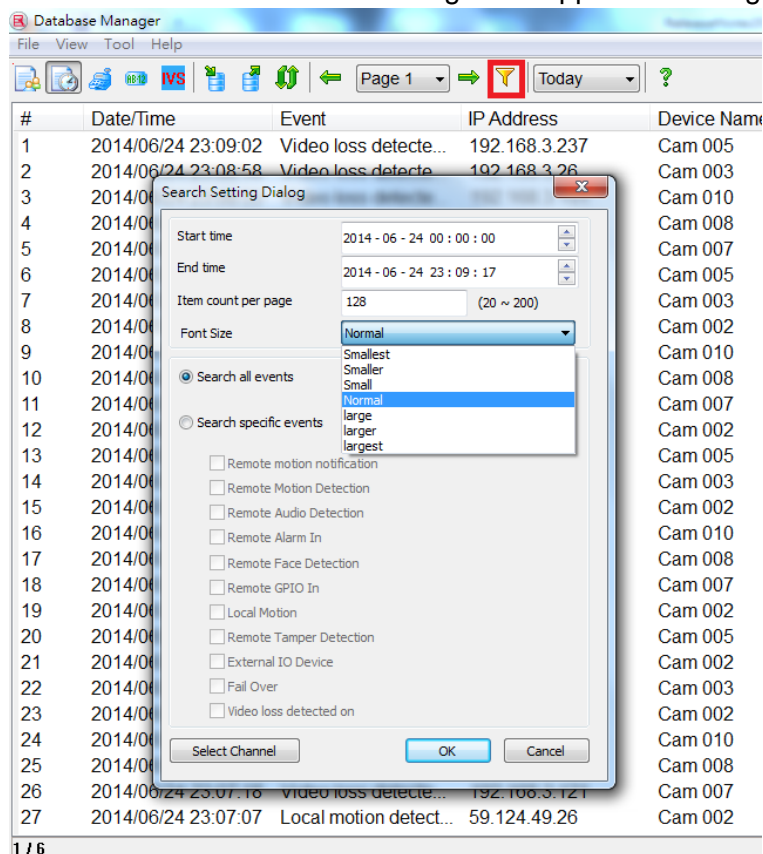
3. Fix the recorded files issue that it may not function properly, if the HDD is set to 20GB buffering space or less for circular recording (#1751).



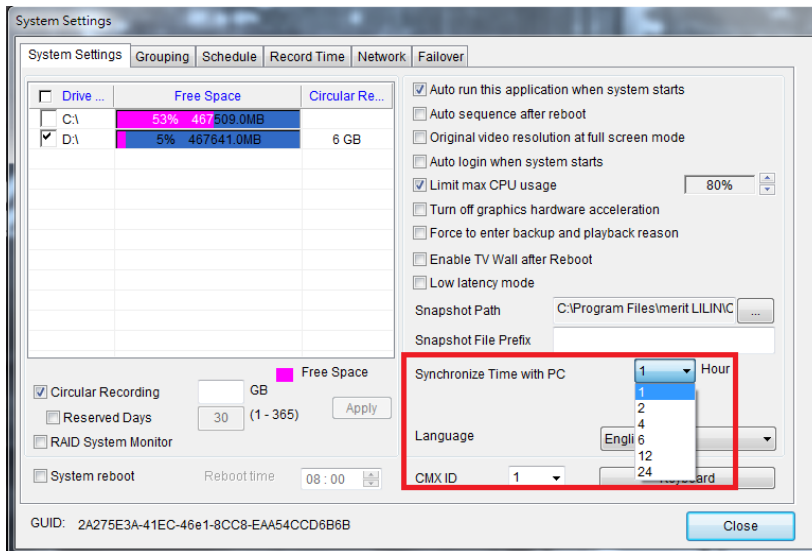
4. Improve the live viewing speed via IE browser, iPhone, and Android Apps.
5. Add the "Snap" and "pause" buttons at live mode for quick snapshot (#1686).
6. Add the feature to get Full HD stream from the NVR series for live view (#1662).
7. Add the Turkish language (#1694).
8. Supported to get Full HD backup in remote playback feature for NVR series (#1662).
9. Add the feature to playback the files from SD card (#1700).



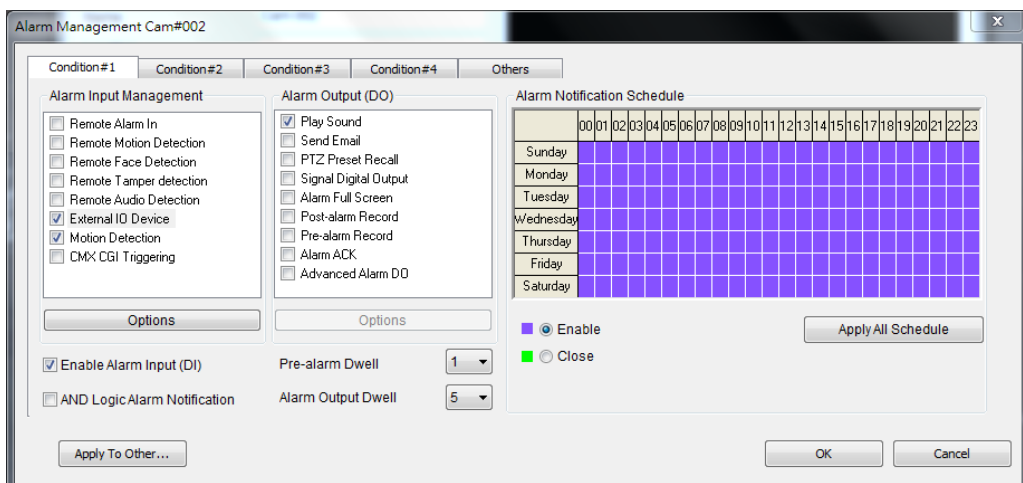
10. Add the feature in MultiPlayBack to support query events from another CMX.
11. Add the feature in DatabaseManager to support searching the events (#1727).



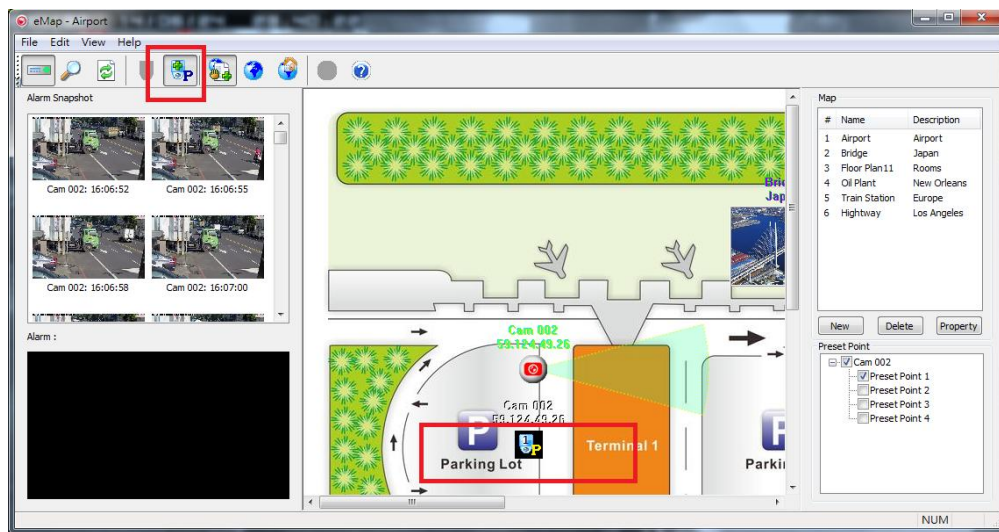
12. Add the feature in DatabaseManager to support how many numbers of data to be in one page and also supported the font size.
13. Support MultiPlayback to play the event video files. See #10.
14. Support MultiPlayback with slow motion playback. See #10.
15. Support NVR time sync (#1744).
16. Support Windows 8 auto login (#1739).
17. Support DatabaseManager for filtering channel. Click on the Filter tool button at DatabaseManager (#1728). See #11.
18. Fix motion color at Timebar. Sometimes, yellow motion indicator shows only Blue continuous recording mode (#1732).
19. Sync Time with PC (CMX) can now have a global timer at Sync Time with PC interval (1~24hrs). Go to System Setting->Sync Time with PC interval (#1730).



20. Improve 44.1K audio quality for IP cameras (#1726).
21. Improve the wheel speed of Microsoft certified mouse (#1717).
22. Support "!" for username and password (#1719).
23. Add unicode for future multi-language support (#1704).
24. Support "ESC" key to exit if "Force Playback Reason" is set (#1703).
25. Support 9:16 mode at 36-division (#1699).
26. Fix mouse hover description for FF and FR that are reserved (#1693).
27. Improve live speed of iPhone and Android phone (#1692).
28. Add message prompt if DVR7/8 can not be connected (#1688).
29. Support Russian language (#1687).
30. Support 4K2K resolution (#1680).
31. Support 120FPS camera (#1680).
32. Fix wording "Getway" wording to "Gateway" in IPScan (#1679).
33. Support alarm schedule for each alarm option (#1687).



34. Support Moxa E1212 for public address (#1671).
35. Support presets object in eMap (#1656).



36. Support OSD color change in ANPR (#1654).

For sales information, please contact:

Michelle, International Sales Director, at
Email: mma@meritlilin.com.tw.

Merit LILIN Enterprise Co., LTD.
No.20, Wu-Gong 6th Rd., New Taipei Industrial Park, Wu-Gu Dist.,
New Taipei City 248, Taiwan (R.O.C.)
TEL: 886-2-2298-8988 FAX: 886-2-2298-9077
www.meritlilin.com