

Merit LILIN Knowledge Base Article for Configuring IVS features and Email Snapshot

Document Number :
Most Recent Update :

Dept: Technical Support, North America

Subject: IVS technology integration with Control4 with Email Snapshot.

Description: The focus of this article will be to give you an understanding of how to log into your Lilin IVS-Camera via IPScan and set up a basic tripwire connection through which you can configure your Control4 project to react with.

Procedures:

Step 1: Downloading and Installing IPScan software

1A. First and foremost you should you download and install IPScan software if you haven't already. The download for IPScan can also be found [here](#) or at Lilin.us>Resources>Downloads>click the following button below on the webpage>Software>IPScan



1B. If your download did not open automatically, navigate to your downloads folder and double click it.

1C. Follow on screen prompts during installation process.

Step 2: Using IPscan software and setting up an IP camera for an IVS Feature

2A. Now that we have IPScan installed, let's get it up and running. Locate software and click on it to get started.

2B. Once IPScan is running, click the refresh button located in Figure 1 in the next page. This will refresh the list of Lilin products on your network.

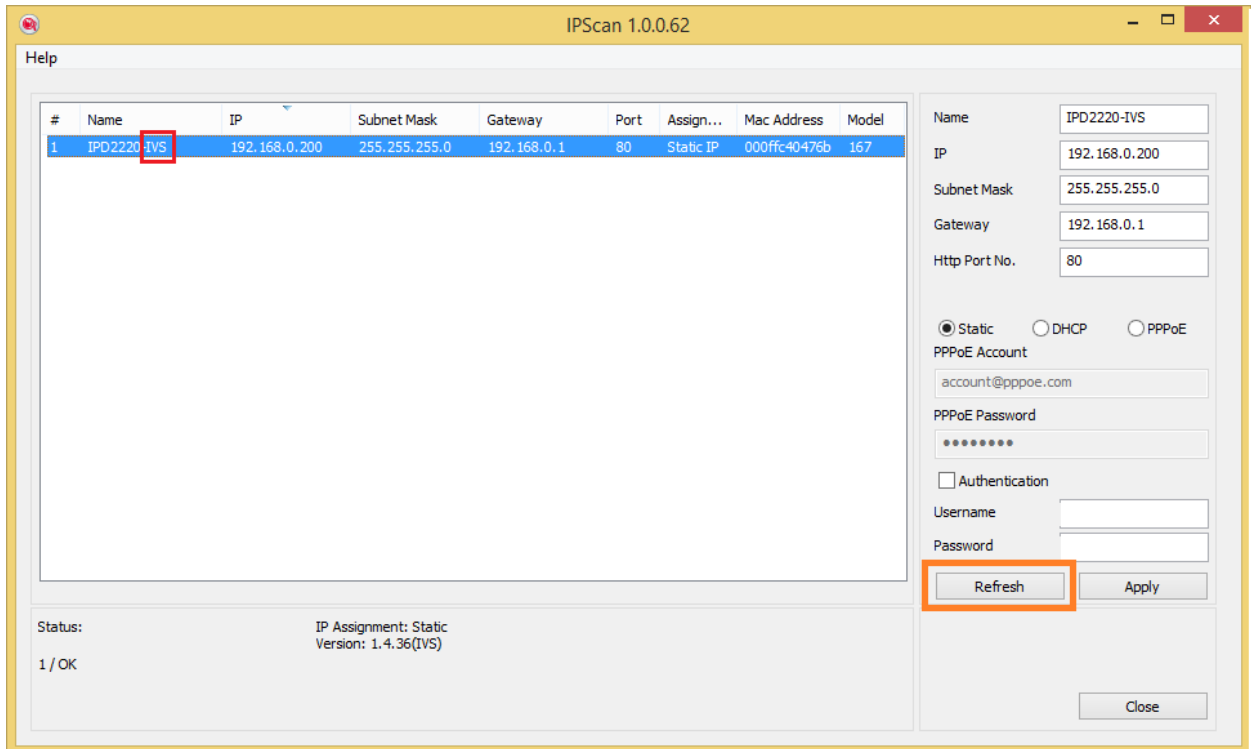


Figure 1

2C. Above you will notice the IP camera that populated will have the IVS tag on it. Make sure you select the correct camera with appropriate capabilities.

2D. If you double click the camera, it will open in your default web browser. We will want to use Internet Explorer though. If you use Mozilla Firefox or Google Chrome, please type in or copy and paste the IP address into IE for max compatibility.

2E. Once searched for in the browser, you will be prompted to log into your IP camera as in Figure 2 below. The default credentials are user "admin" and password "pass".

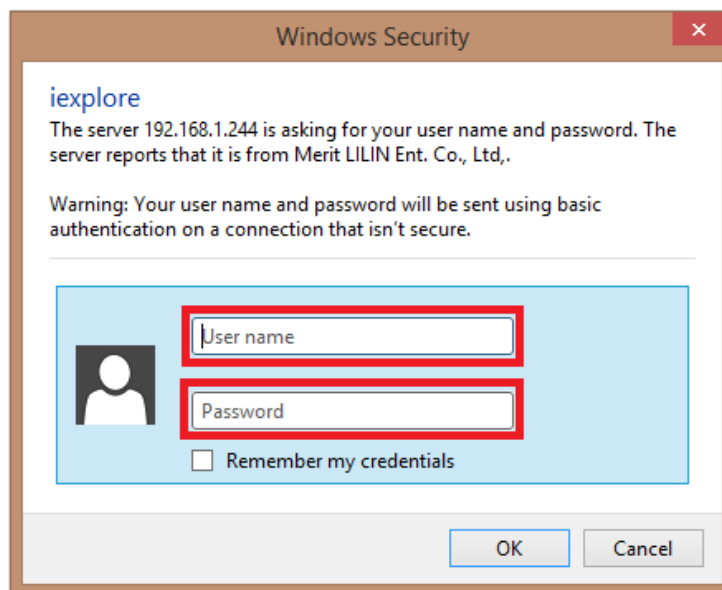


Figure 2

2F. Once inside you'll want to click the "Setup" tab located on the top right corner.



Figure 3

2G. Under setup you'll see "Advanced mode".



Figure 4

2H. Click "Advanced mode", then navigate to the "Event" tab.



Figure 5

2I. While in "Event" tab, select "IVS".

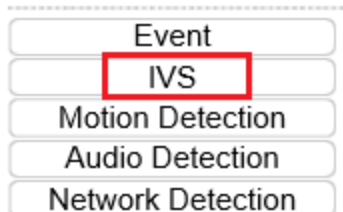


Figure 6

2J. You'll notice a few selections here. Make sure the bullet containing "Tripwire, Semaphore + Tripwire" option is checked.

Motion Detection, Face Detection, Tamper Detection

Advanced Motion Detection

Tripwire, Semaphore + Tripwire

Object Counting

Figure 7

2K. Once submitted is hit, the camera will take 90 seconds to restart.

Step 3: Configuring an IVS feature

3A. After the IVS camera has rebooted, refer to Step 2 (2F-2I) to find the "Event" tab. You'll want to select "Motion Detection" this time instead of "IVS".



Figure 8

3B. At this screen you will want to select "edit" (#1) then "enable" (#2) and draw your desired tripwire line or rectangle (#3) and customize the motion sensitivity.

*You will notice in Figure 8 from the previous page, I have the tripwire rectangular box over the door frame where foot traffic coming down the stairs to the next room will not trigger the IVS, reducing a false positive scenario. Only when the door frame is opened will it activate. (In this case I have it triggered to turn on the lobby lights when someone enters or leaves.)

3C. In Figure 8 below, you can see how we can use the tripwire connection to set up a digital fence or zone around a pool. You could trigger lights, alarm signals, alerts via email and text, etc.

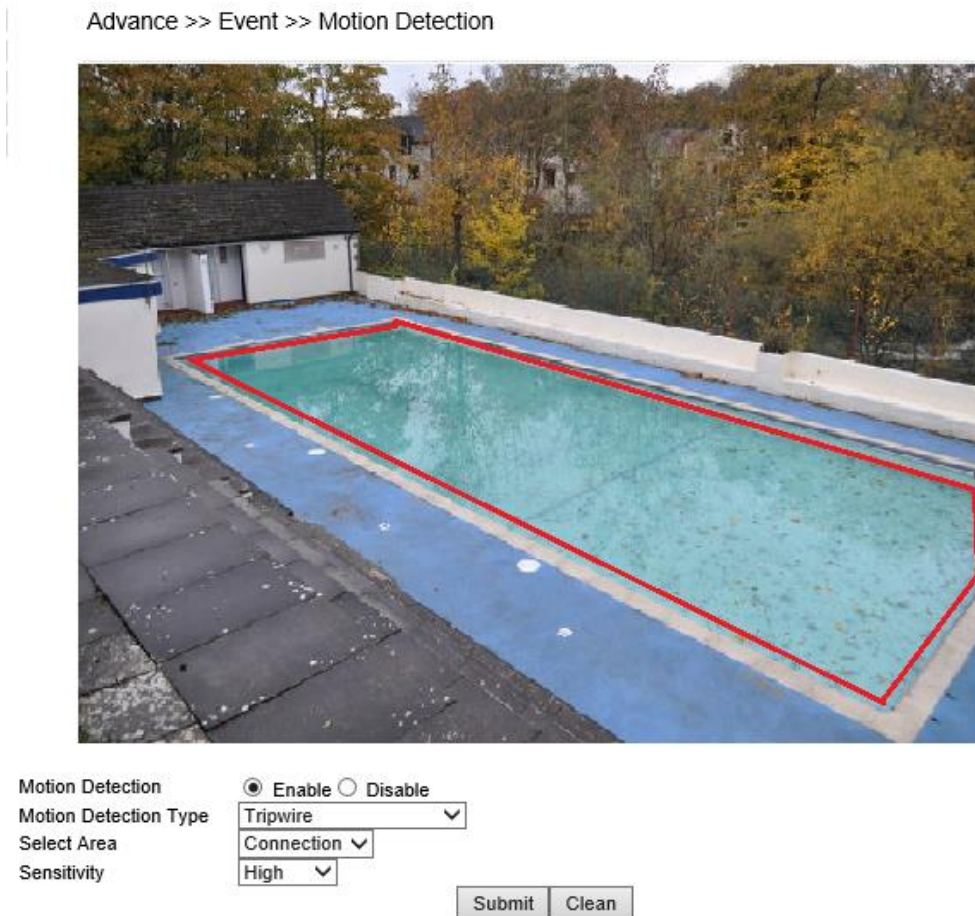


Figure 9

3D. Make sure to test that your IVS feature is triggering before we get into Composer. In Figure 8 on the previous page, I would open the door a few times making sure that I'm getting motion detected by doing so. In Figure 9 above, I would walk across the pool area a few times to verify that the outline is triggering off motion as well.

3E. Once everything is submitted and working to your liking, open up Composer.

Step 4: Configuring an IVS camera in Control4

4A. Once logged into Composer, start your C4 project. Add your IVS camera via SDDP by navigating to the "Discovered" tab and double clicking it.

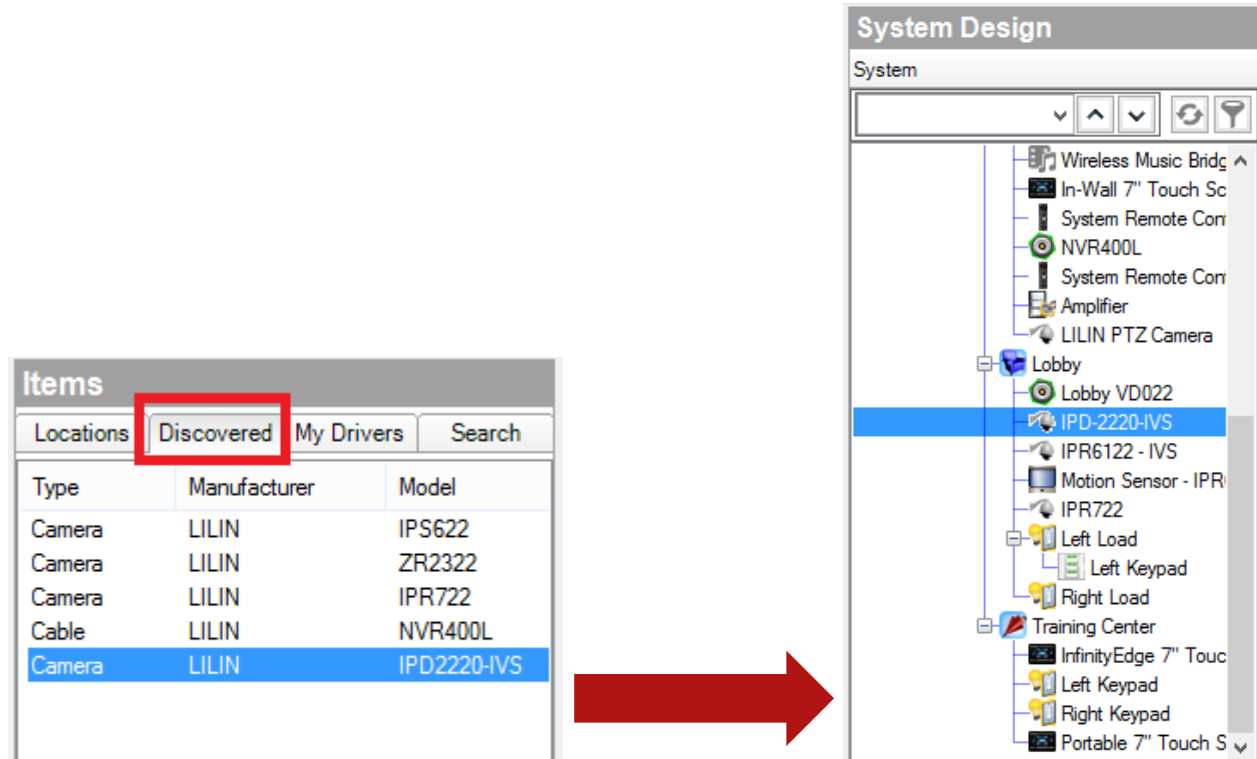


Figure 10

- Here you can see the camera Populate through SDDP. When you double click and add it in, it also brings the driver with it making it easier for you to use Lilin products with Control4.

4B. While in "System Design" you will want to use the "Search Dialogue" box to search for "Generic Motion Sensor". Add the motion sensor driver into your project.

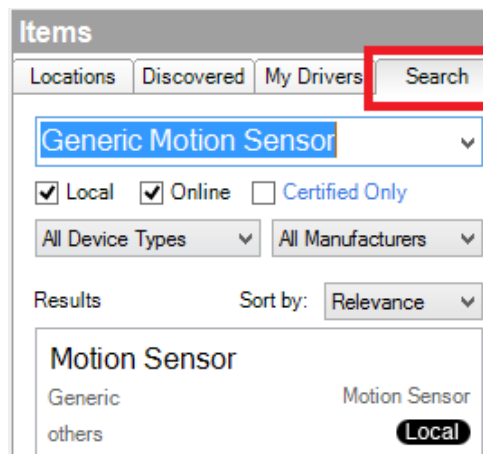


Figure 11

4C. Once done you will select the “Connections” tab located under “System Design”. Select the IVS camera you previously added in. Select “Motion Detection” under control outputs. Click and drag the “Motion Detection” output to the input of the “Motion Sensor” input you previously created.

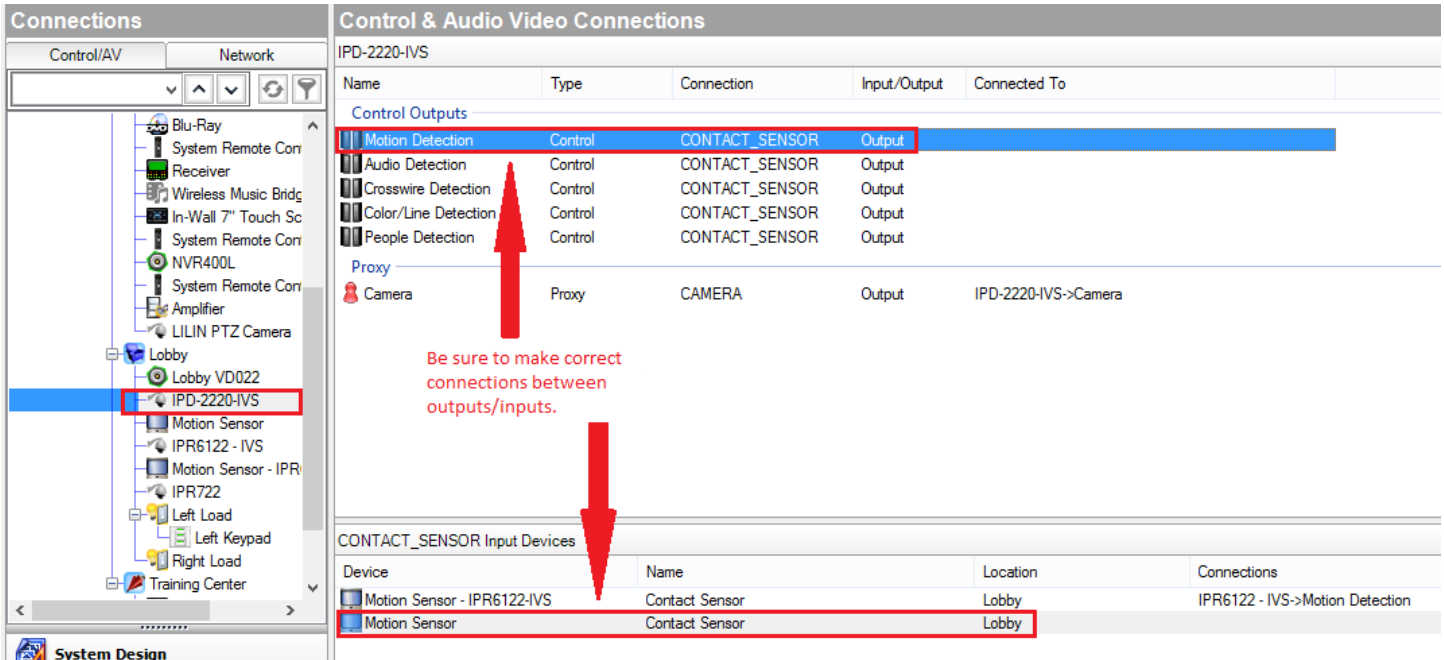


Figure 12

4D. Now that we have our connections made, you can go to the “Programming” tab and set up your camera to listen for events, which then can issue actions accordingly.

Step 5: Setting up email Snapshot Notification

5A. In Figure 14 on the next page, it is important to note that all the camera properties are shown, be sure to scroll through the whole list as they must be filled out correctly in order for the email snapshot to work. Please be sure to properly fill out SMTP servers, Email to and from, passwords, etc.

5B. On figure 13 below make sure when you are done, to click on the action tab. This will prompt you with a few different options. Click on “Update Email Settings”. Once clicked, select “Send Email Snapshot” to verify its sending to your email.

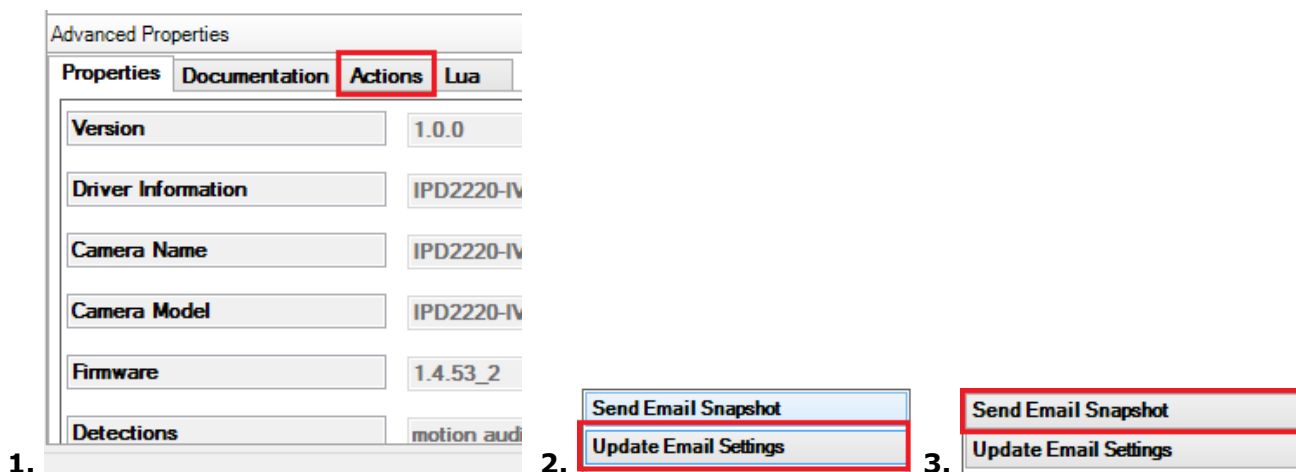


Figure 13

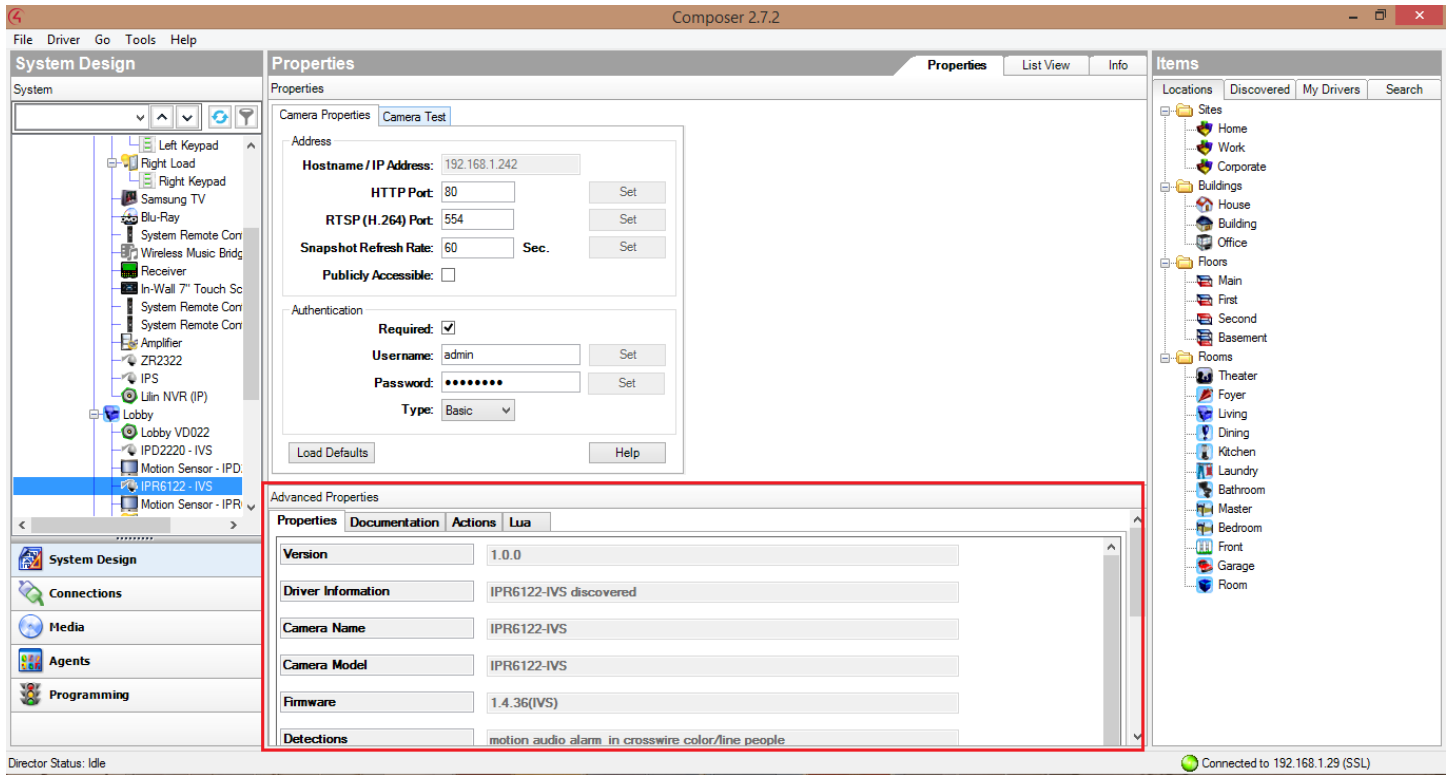


Figure 14

Step 6: Programming the Motion Sensor

6A. On the Programming Tab. Navigate to the motion sensor that is tied to your IP camera under Device Events. Select "When the Motion Sensor - (Camera) senses motion" as your event.

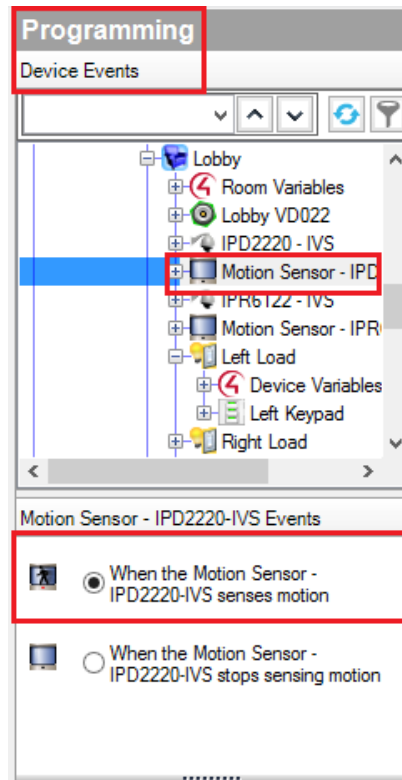


Figure 15

6B. Under Device Actions on the right on side, select your camera that your motion sensor is connected to. Under Device Commands, select "Device Specific Command" and make sure SEND_SNAP_SHOT is highlighted. Add that command to your motion sensor by double clicking the green arrow.

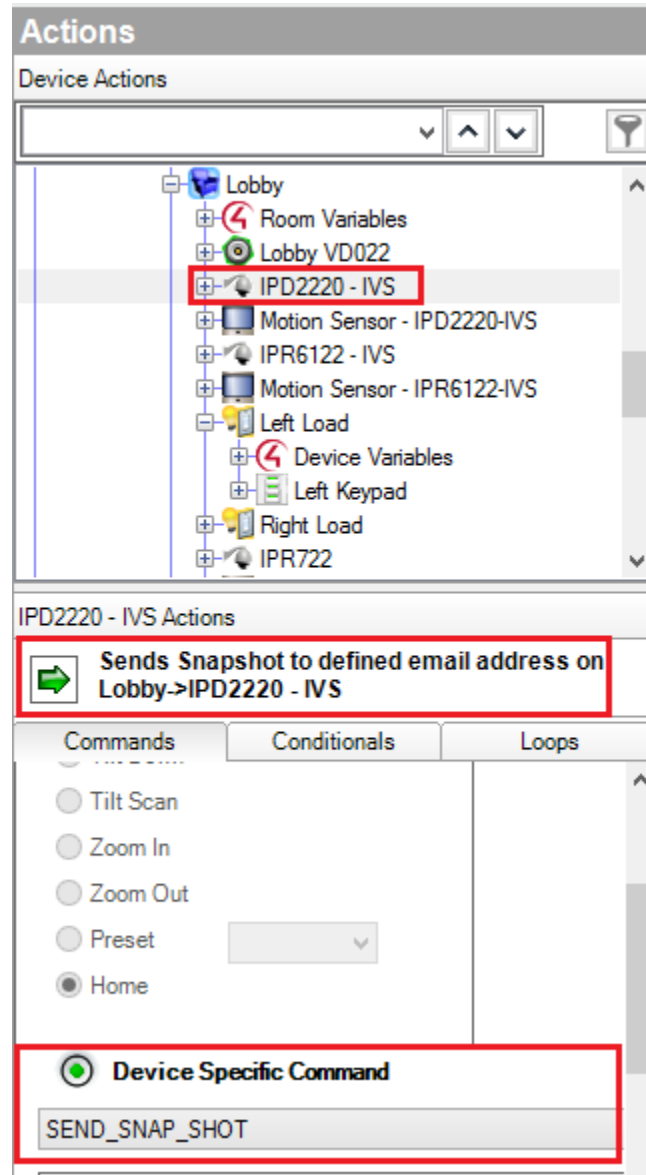


Figure 16

6C. Figure 17 below gives a full view of what your programming will look like once it's configure.

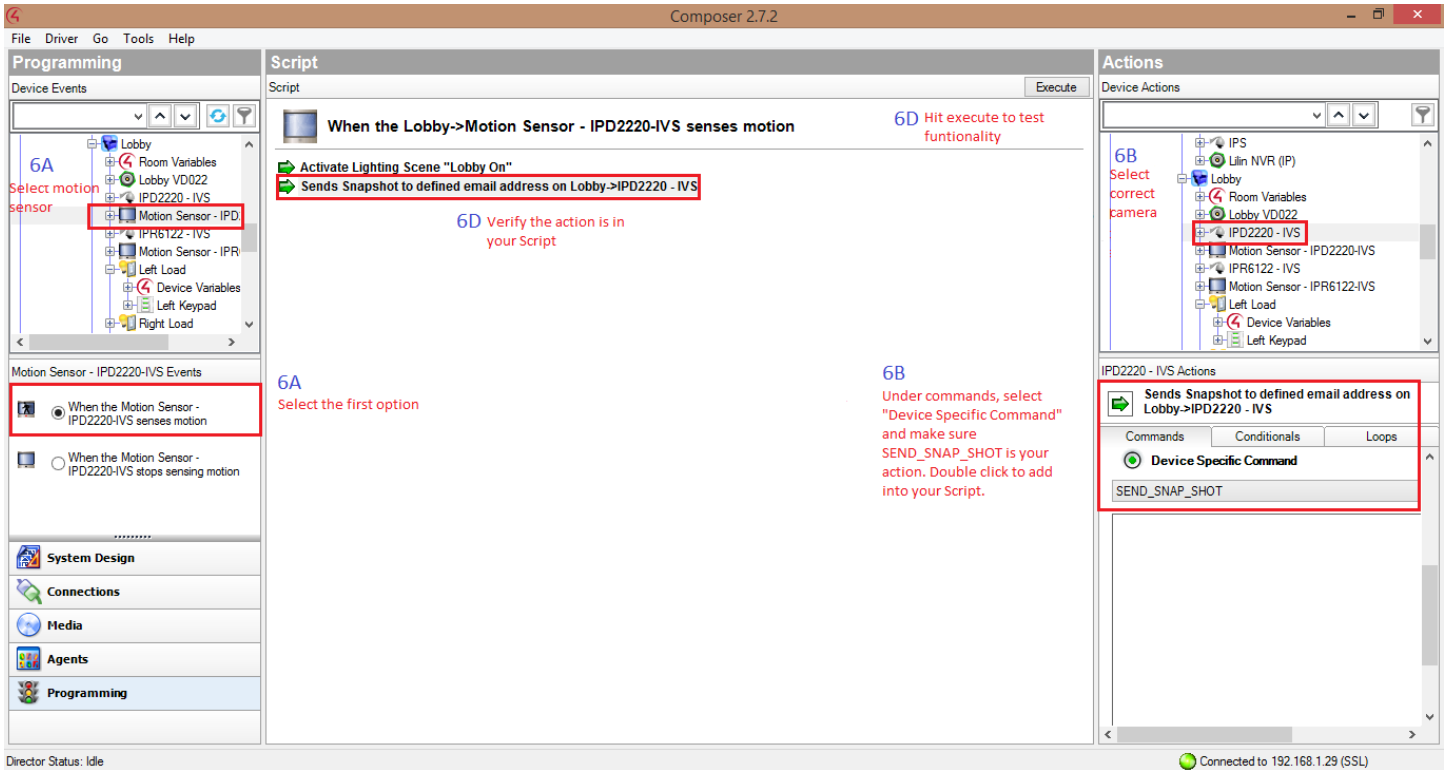


Figure 17

6D. Once your programming is complete, make sure to hit "Execute" to initiate a test that will make sure all your coding is correct.

This concludes the setup procedure for IVS feature - Tripwire connection and Email Snapshot notification with Control4's Composer software.

If you still have questions regarding this process, or if you have any questions regarding support for any Lilin products, please feel welcome to reach out to our dedicated support staff by calling (626)739-1840, or emailing us at info@lilin.us