



Merit LILIN Application Note for Interoperable test of Exacq Software and LILIN IP Cameras

Document Number : A00027

Date : 06/05/2013

Dept : Technical Support, Taipei

Subject: Interoperable test of Exacq software and LILIN IP cameras

Firmware Requirement:

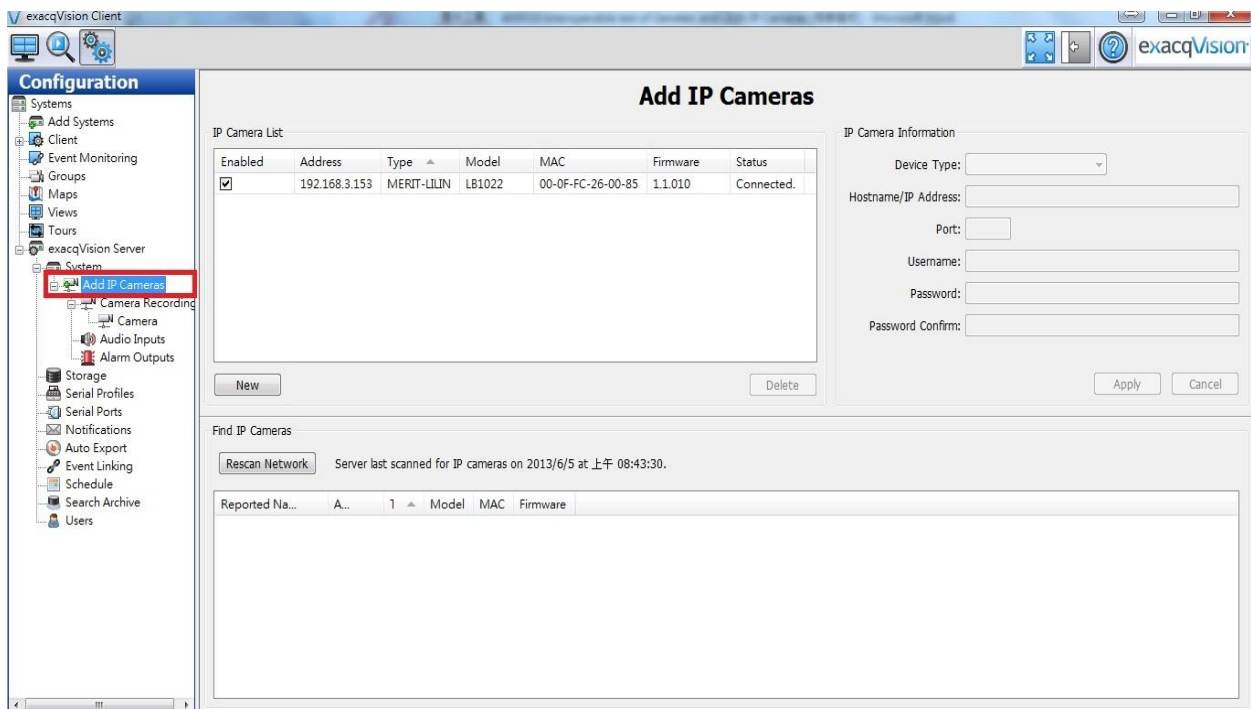
LILIN iMEGAPRO camera firmware: version 1.0.509f or above

LILIN L Series camera firmware: version 1.1.010 or above

Exacq Software: v5.4.3.40424

Step #1:

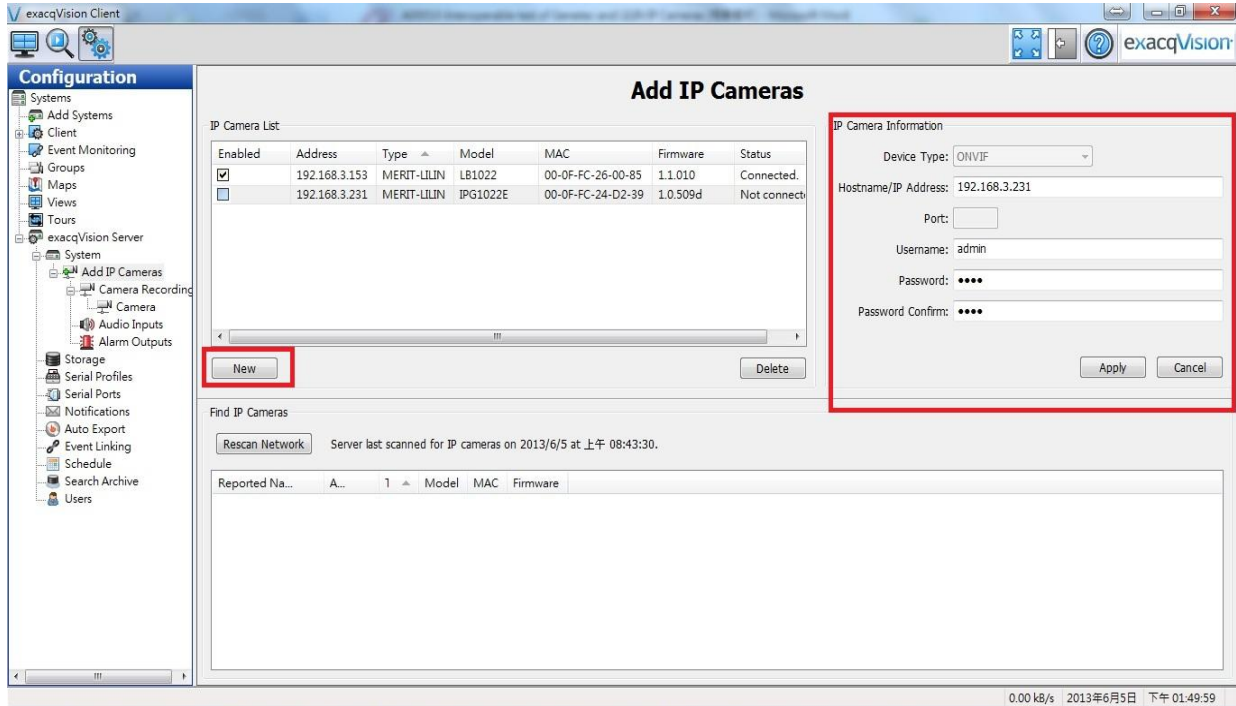
Please use exacqVision Client to add LILIN cameras. Select "Configuration" page" and click "Add IP Camera" button as shown below:





Step #2:

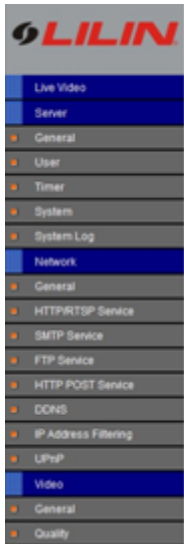
Press the “New” button to add a camera in exacqVision Client. Choose the Device Type with “ONVIF” for the connection protocol. Enter the IP address, user name, and password for the camera. Press the Apply button.



Step#3:

Use Internet Explorer browser to enter the camera settings and make sure that the ONVIF selection is at Exacq.

iMEGAPRO Range



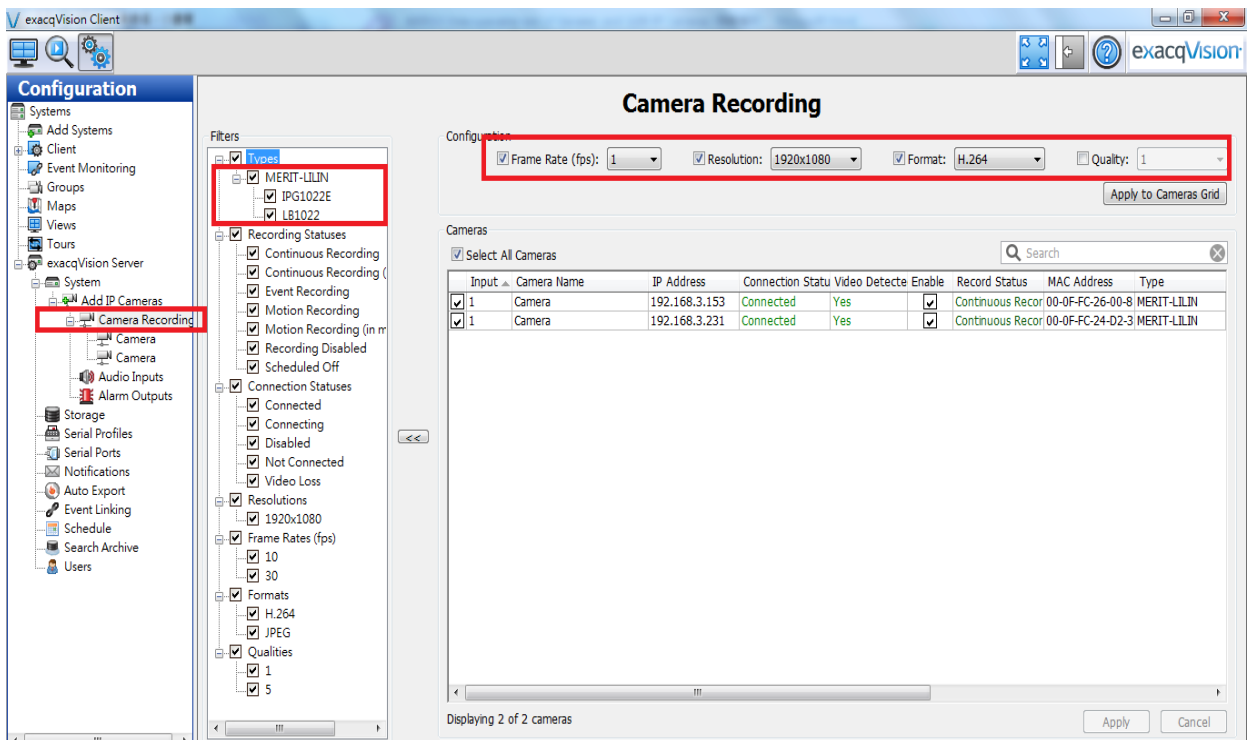


L Series



Step#4:

You may modify the camera's recording detail such as the frame rate, resolution, and recording format.





Step#6:

After above settings are done, please back to Live Page to view the live video.

