



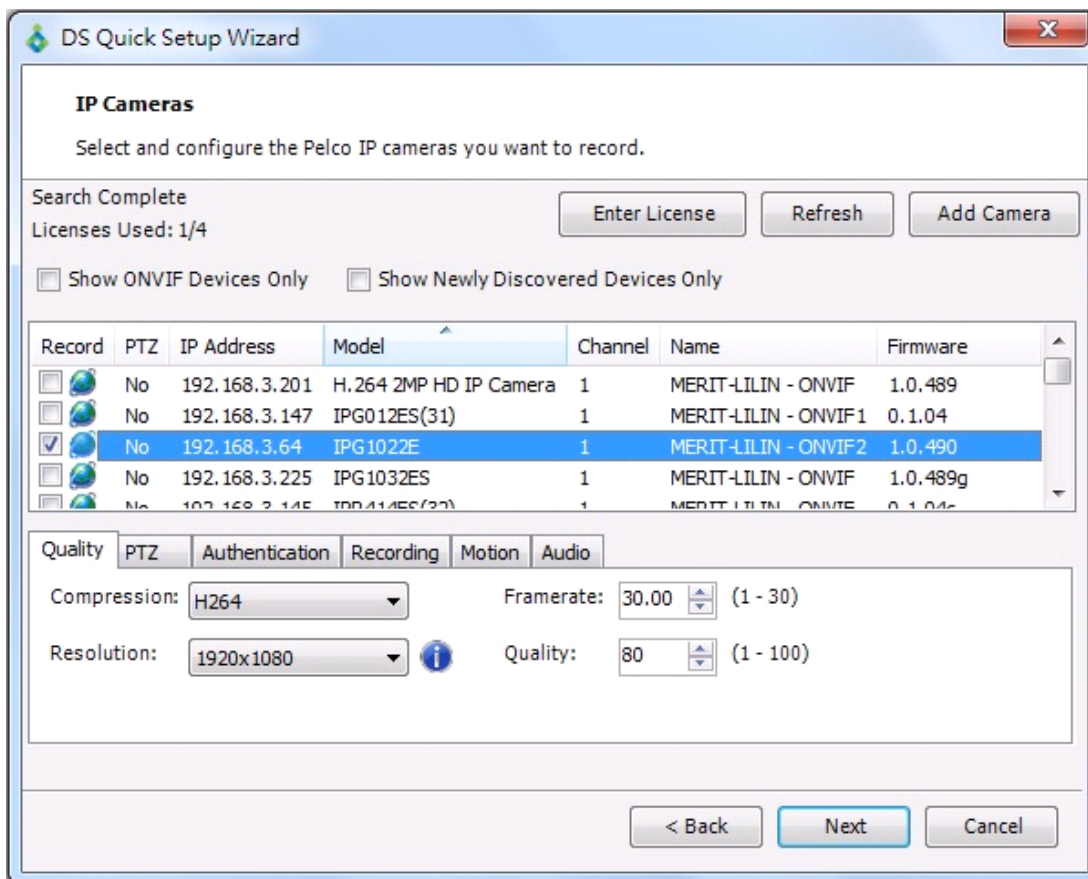
Merit LILIN Application Note for Interoperable test of Synology Software and LILIN IP Cameras

Document Number : A00018
Date : 11/14/2012
Dept : Technical Support, Taipei

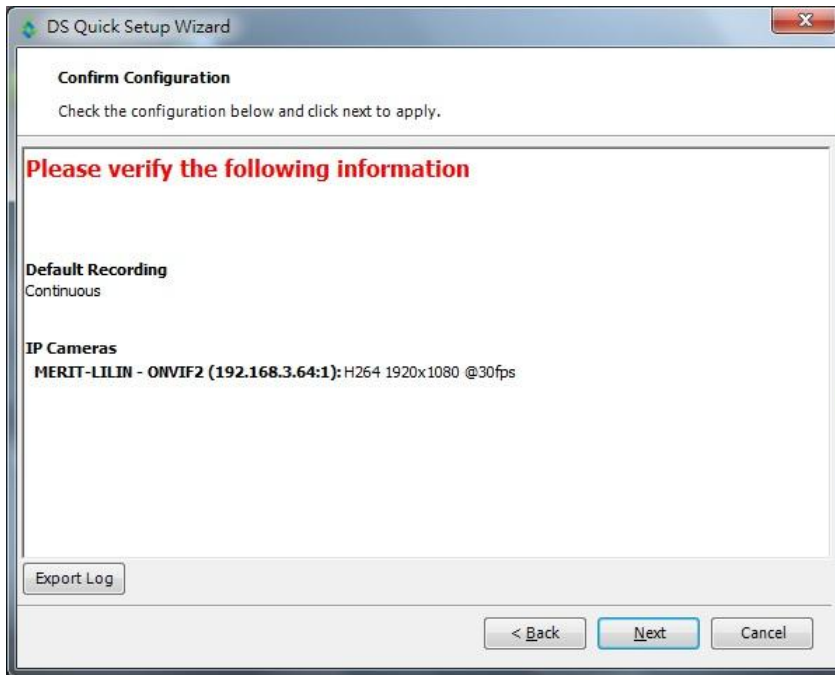
Subject: Interoperable test of Pelco Digital Sentry DS ControlPoint and LILIN IP Cameras

LILIN IP camera platform: 2MP & 3MP IP cameras
LILIN IP camera firmware: version: 1.0.490 or above
Pelco Digital Sentry DS ControlPoint: 7.4.149

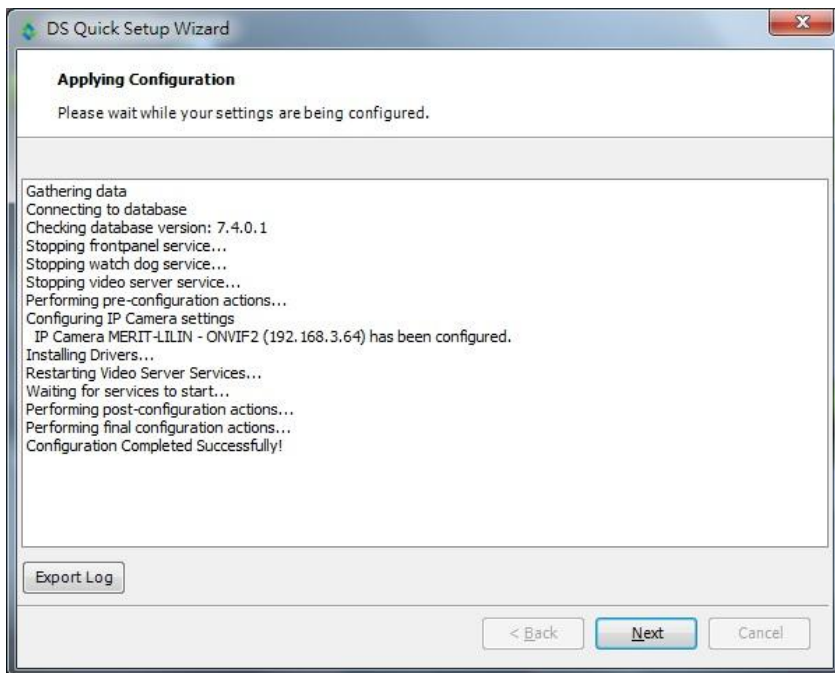
After the software (DSInstaller_7_4_149) is installed, we can use the DS Quick Setup to scan all LILIN's devices on the LAN. The example shown below is to add a 2MP IP camera (IPG1022E).



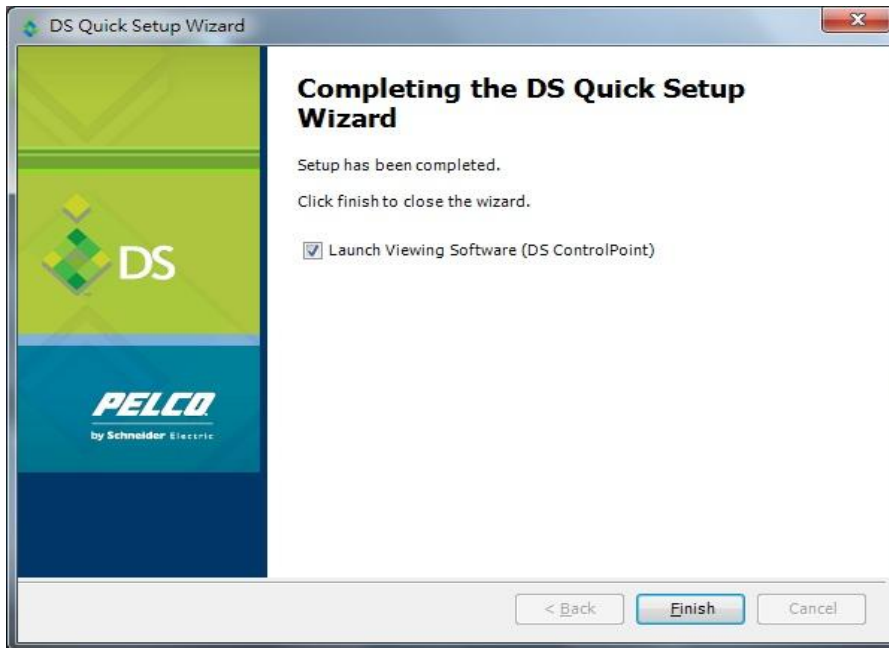
2. When the camera is selected in step 1, then press “Next” and it shows the camera details below.



3. It is now applying the configuration for the camera as shown below.



4. After it is done, click on “Launch Viewing Software (DS ControlPoint)” and click on the “Finish” button.



5. Drag and drop the camera named “MERIT-LILIN – ONVIF” on the left hand side to the Live View on the right hand side. That’s all you need to do.

