



Merit Lilin Application Note for Interoperable test of Avigilon Software and LILIN IP Cameras

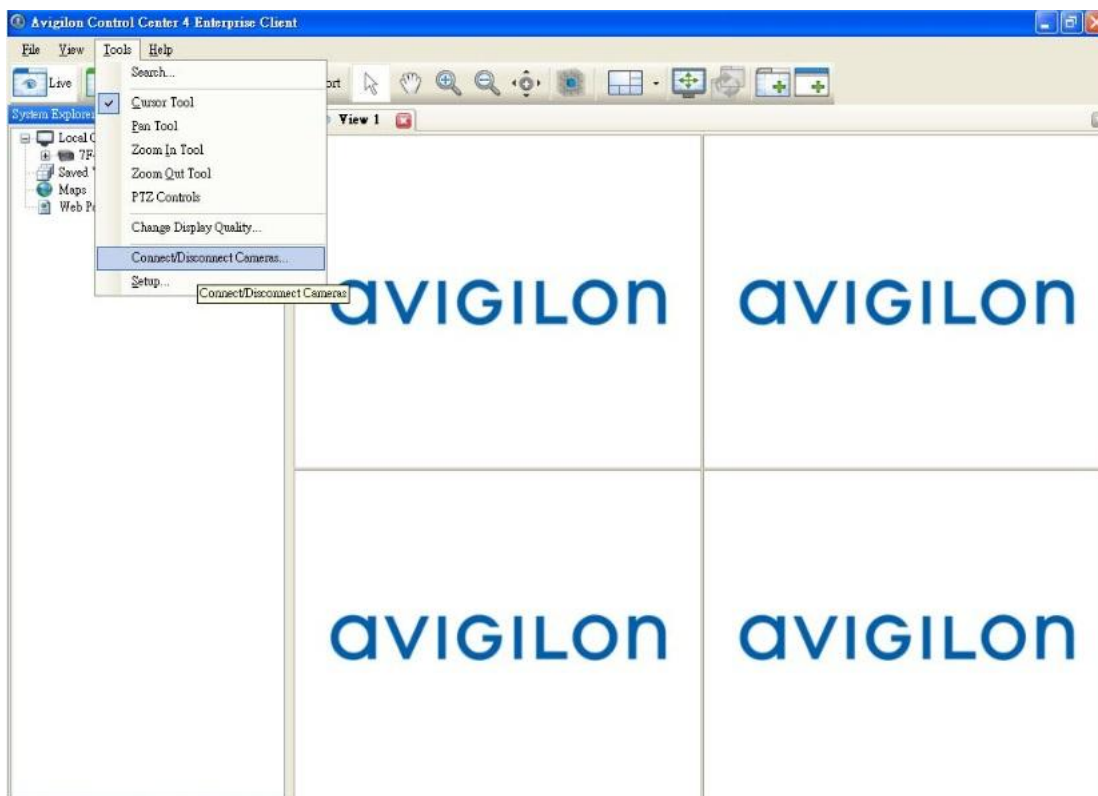
Document Number : A00007
Date : 05/21/2012
Dept : Technical Support, Taipei

Subject: Interoperable test of Avigilon Software and LILIN IP Cameras

LILIN IP camera platform: 2MP & 3MP IP cameras
LILIN IP camera firmware: version: 1.0.484
AvigilonControl Center 4 Enterprise Client :V4.10.0.48

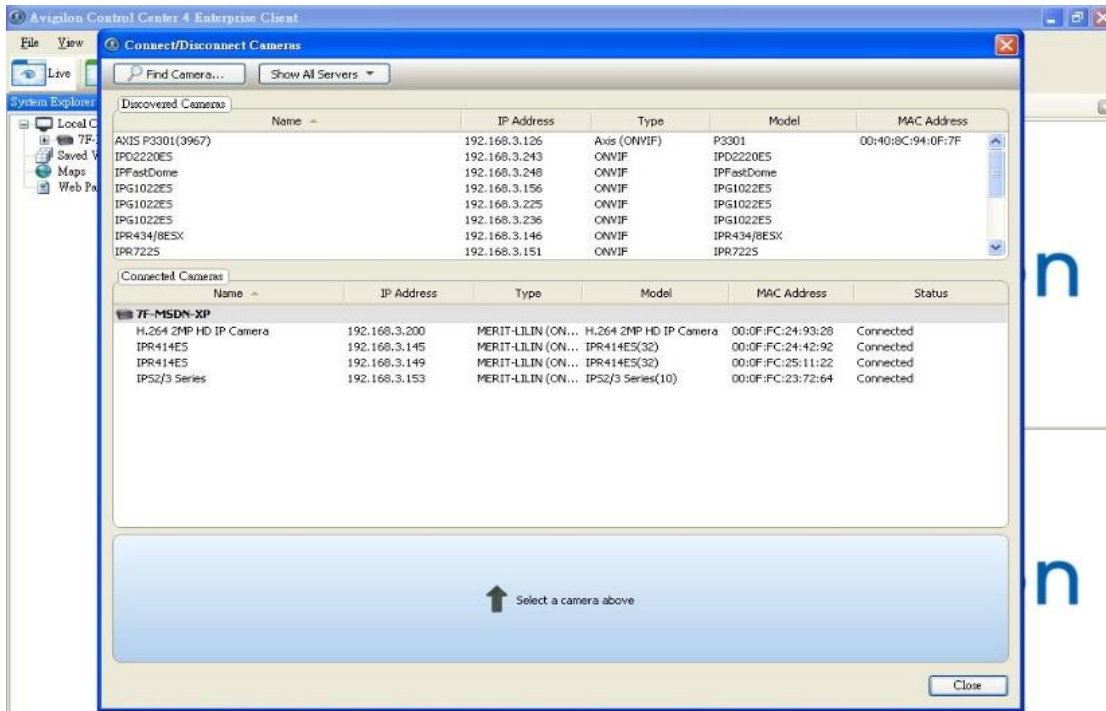
Step 1:

Open AvigilonControl Center 4 Enterprise Client and select Connect/Disconnect Cameras.



Step 2 :

It scans the cameras via LAN automatically and just drag and drop the cameras from “Discovered Cameras” to “Connected Cameras”.



Step 3 :

After selecting LILIN's IP cameras, Avigilon Control Center 4 Enterprise Client software shows videos from LILIN's IP cameras.

