



Merit LILIN Application Note

Interoperable test of Genetec Omnicast Software and LILIN IP Cameras

Document Number : A00010

Date : 12/30/2013

Dept : Technical Support, Taipei

Subject: Interoperable test of Genetec Omnicast software and LILIN IP cameras

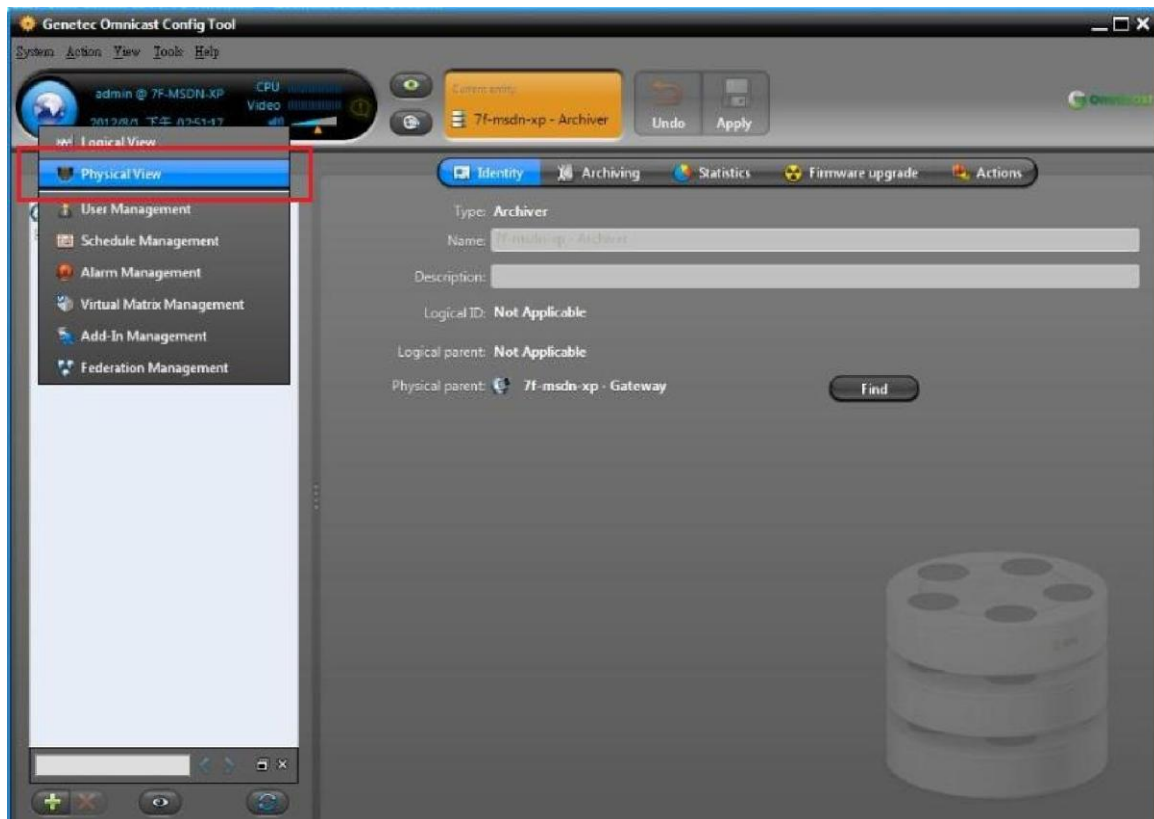
LILIN iMEGAPRO camera firmware: Version 1.0.57P or above

LILIN L Series camera firmware: Version 1.1.13P or above

Genetec Omnicast software: V4.8.2751.12 or above

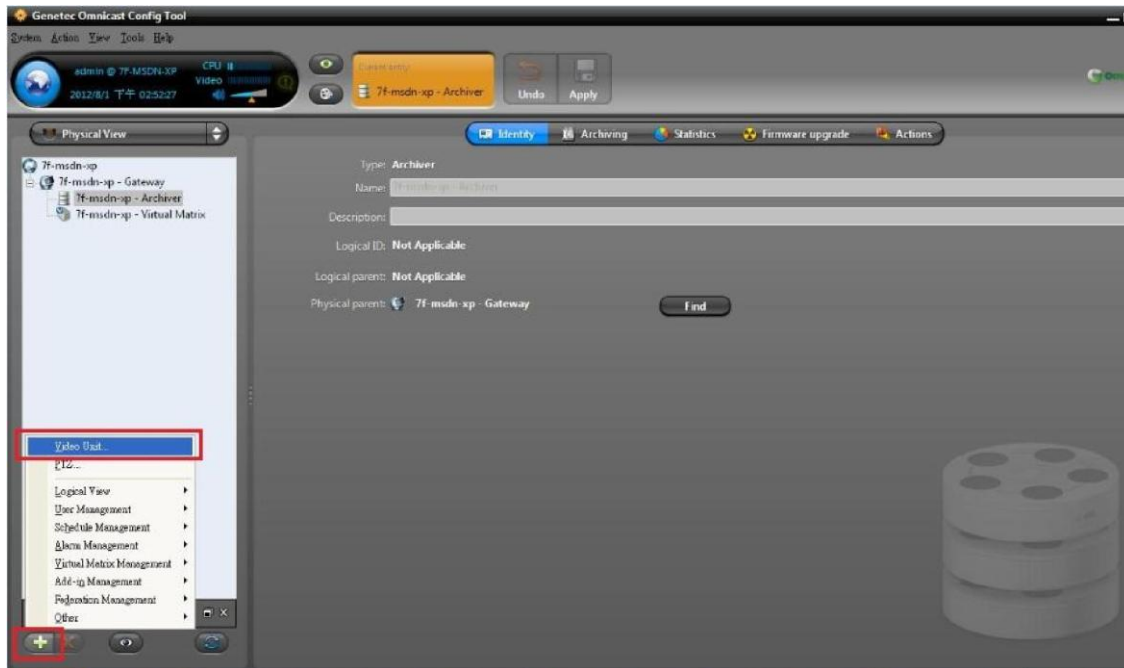
Step #1:

Please use the "Config Tool" to add LILIN's camera. Select "Physical View" as shown below:



Step #2:

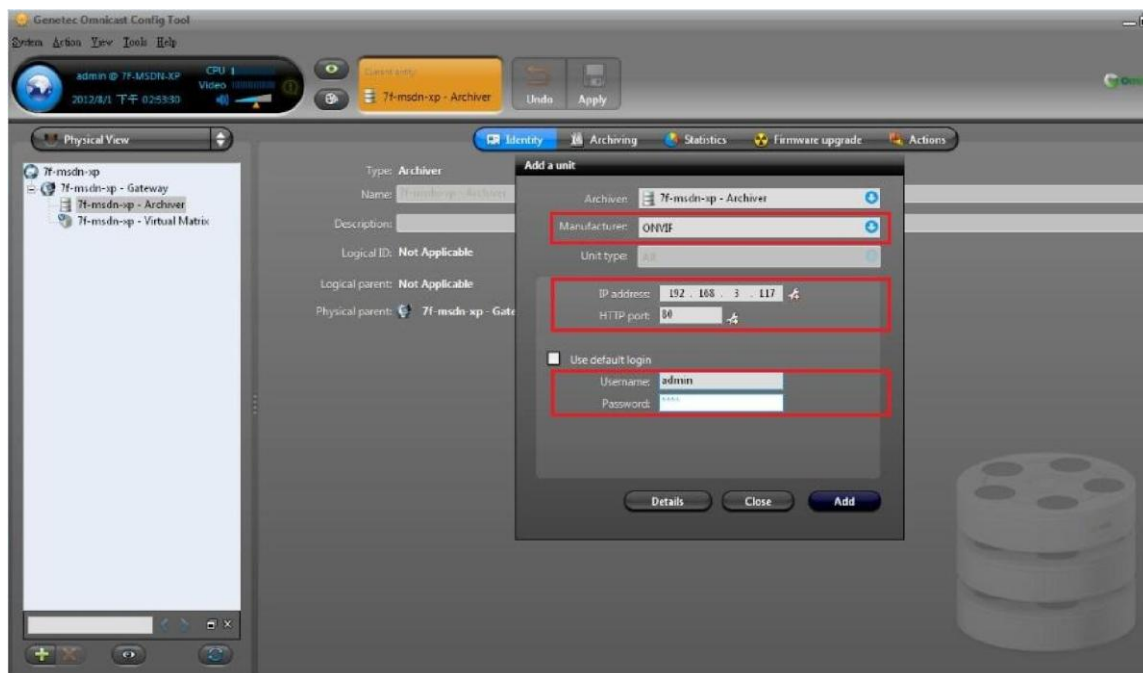
Press the “+” sign and click on “Video Unit”.



Step #3 :

Add a unit to the software like the picture below: Choose the Manufacturer as “ONVIF”. Enter the IP address, HTTP port, username, and password of the camera. Press the “Add” button.

The default credential is username: “admin” and password: “pass”.

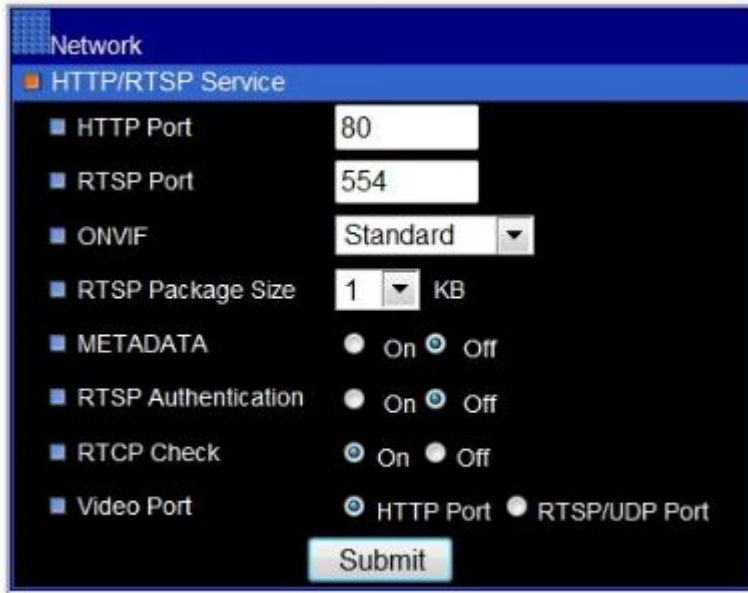




Step #4:

Use IE browser to enter the camera settings and make sure that the ONVIF selection is at Genetec.

iMEGAPRO range camera configuration



L series configuration



[Live](#) | [Basic Mode](#) | [Advance Mode](#) | [Language](#) | [Logout](#)

System Video / Audio **Network** Maintenance

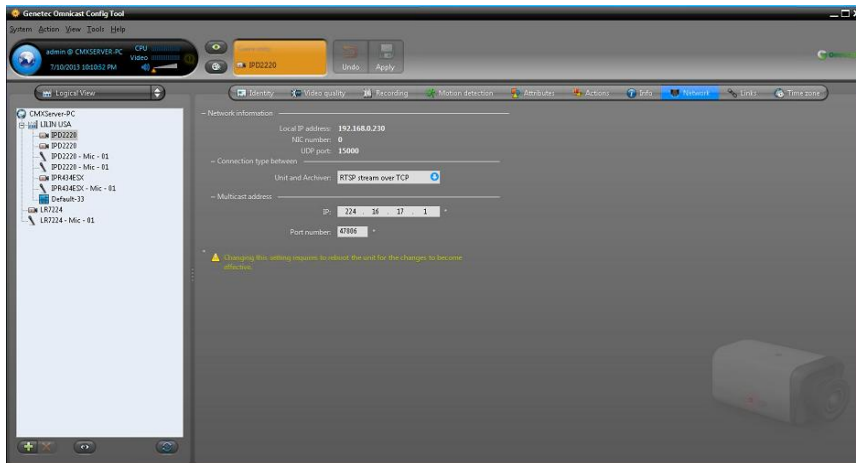
General
HTTP/RTSP Service
Multicast
DDNS
UPnP
SDDP / Heartbeat

Basic >> Network >> HTTP/RTSP Service

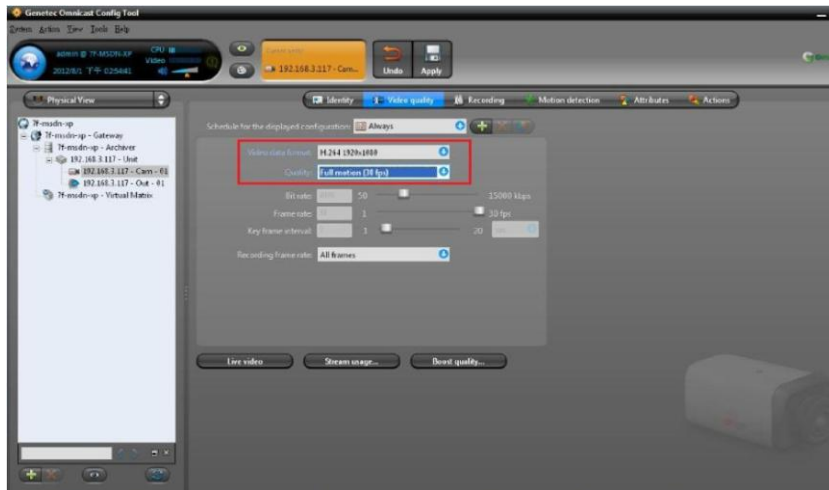
HTTP Port	<input type="text" value="80"/>
RTSP Port	<input type="text" value="554"/>
ONVIF	<input type="text" value="Standard"/>
RTSP Package Size	<input type="text" value="1"/> KB
METADATA	<input type="radio"/> On <input checked="" type="radio"/> Off
RTCP Check	<input checked="" type="radio"/> On <input type="radio"/> Off
RTSP Authentication	<input type="radio"/> On <input checked="" type="radio"/> Off
Video Port	<input checked="" type="radio"/> HTTP Port <input type="radio"/> RTSP/UDP Port

Step #5:

Select on "Network" tab and choose "RTSP stream over TCP" (recommended) or "RTSP stream over UDP" from Connection Type.



Step #6:
Choose “Video Data Format” and “Quality”. Press the “Apply” button on the top.



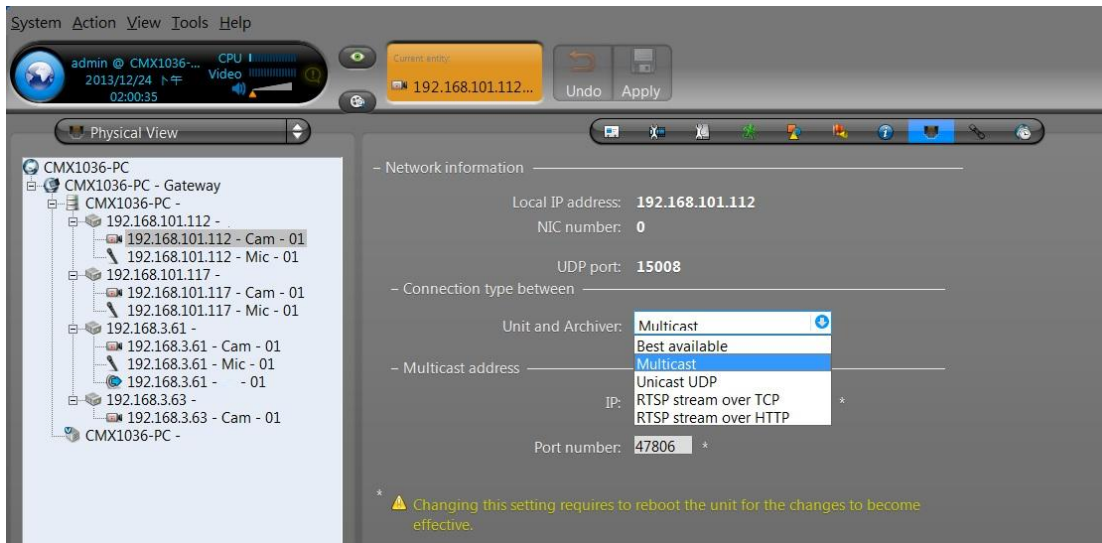
Step #7:
After above settings are done, please use Genetec Omnicast Live Viewer to view the live video.





Connection type

After Genetec version 5.0 or above, “RTST stream over HTTP”, “RTSP stream over TCP”, “Unicast UDP”, and “Multicast” are supported.



Certified Genetec version

8.2751.12





LILIN testing environment

	L series * 2 cameras	Pro series * 2 cameras
Best available (RTP/UDP)	72 hrs: pass	72 hrs: pass
Multicast	100 hrs: pass	100 hrs: pass
RTP/TCP	72 hrs: pass	72 hrs: pass
RTP/HTTP		

Pass: no single video loss

For more information, contact fae@meritlilin.com.tw.