



Merit LILIN Application Note

How to Add ONVIF Cameras for LILIN NVRs

Document Number : A00047

Date : 2014/05/17

Dept: Technical Support, Taipei

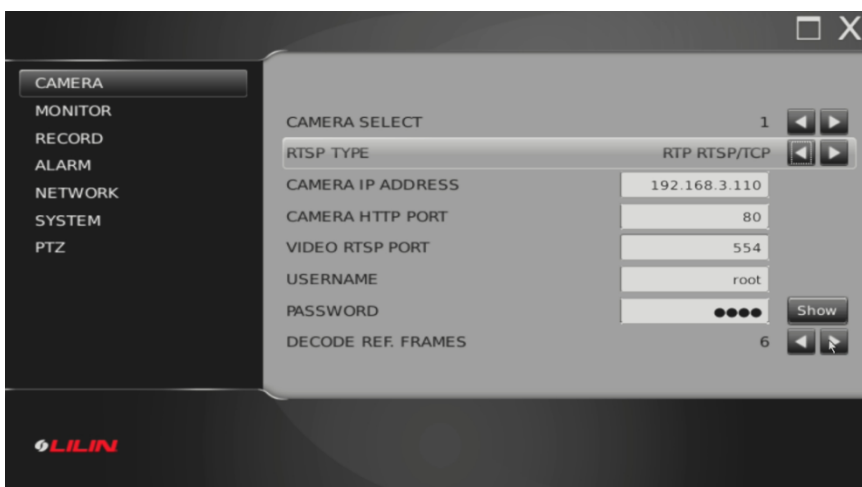
Subject: This document describes how to add ONVIF cameras for NVR116, NVR109, NVR104, NVR404, and VD022.

LILIN NVRs and video decoder support ONVIF Profile S cameras. To add ONVIF cameras to NVRs and video decoders, please follow steps below:

Step #1: Select Setup->Camera->IP Camera Setup.



Step #2: Select RTSP type such as RTP RTSP/TCP for the ONVIF camera. Enter username and password for the camera.





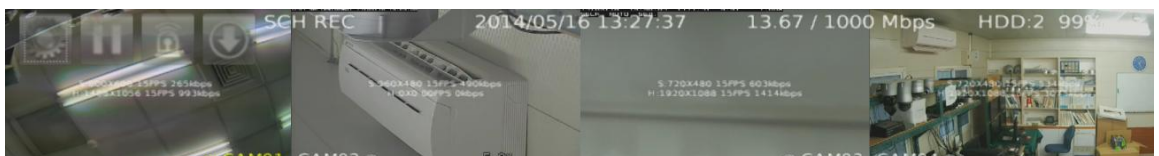
Step #3: You can also use WS-Discovery for scanning third-party ONVIF cameras automatically. Select Setup->Camera->WS Discovery for scanning IP cameras.



Step #4: All ONVIF based cameras can be scanned and listed. Assign the channel for the camera.



Step #5: Click on X button to return to live monitoring mode. You can right-mouse click on a channel to see dual-streaming statistics.



Note: LILIN NVRs and video decoders support only dual-streaming cameras. No resolution higher than 1080P is supported.



Step #6: You can also use the web interface at Configure->WS Discovery of the NVR or video decoder for scanning the ONVIF camera. Assign camera's channel for adding the ONVIF camera.

WS Discovery									
Camera									
Number	PTZ	Audio	IP Address	HTTP	RTSP	Type	Manufacturer	Serial number	Camera
1	Yes	Yes	192.168.0.103	80		VideoEncoder			None ▾
2	Yes	Yes	192.168.0.105	80		VideoEncoder			None ▾
3	Yes	Yes	192.168.0.107	80		VideoEncoder			None ▾
4	Yes	Yes	192.168.0.108	80		VideoEncoder			None ▾
5	Yes	Yes	192.168.0.109	80		VideoEncoder			None ▾
6	Yes	Yes	192.168.0.110	80		VideoEncoder			None ▾
7	Yes	Yes	192.168.0.117	80	554	VS012(11)	MERIT-LILIN	000FFC2310B1	None ▾
8	Yes	Yes	192.168.0.118	80	554	VS012(11)	MERIT-LILIN	000FFC2310A6	None ▾
9	Yes	Yes	192.168.0.119	80	554	VS012(11)	MERIT-LILIN	000FFC2310AD	None ▾
10	Yes	Yes	192.168.0.122	80	554	IPS2/3 Series...	MERIT-LILIN	000FFC237015	None ▾
11	No	No	192.168.0.134	80	554	IPR320E	MERIT-LILIN	000FFC24E02B	None ▾
12	No	Yes	192.168.0.137	80	554	IPD2220E	MERIT-LILIN	000FFC24F0E0	None ▾
13	No	Yes	192.168.0.144	80	554	IPD2220E	MERIT-LILIN	000FFC24F895	None ▾
14	No	Yes	192.168.0.149	80	554		Axis		None ▾
15	No	Yes	192.168.0.237	80	554	IPR414ES(32)	MERIT-LILIN	000FFC244020	None ▾
16	No	Yes	192.168.0.238	80		IPR74248E			None ▾
17	No	Yes	192.168.0.240	80	554	IPD2220E	MERIT-LILIN	000FFC24F5A0	None ▾
18	No	Yes	192.168.150.9	80		LR74248			None ▾
19	No	Yes	192.168.150.10	80	554	IPS420	MERIT-LILIN	000FFC259485	2 ▾
20	No	Yes	192.168.150.13	80		IPR73348			7 ▾
21	No	Yes	192.168.150.14	80	554	IPR73348	MERIT-LILIN	000FFC249926	None ▾
22	No	Yes	192.168.150.15	80	554	IPR73348	MERIT-LILIN	000FFC249100	8 ▾
23	No	Yes	192.168.150.16	80		IPR4348			None ▾
24	No	Yes	192.168.150.17	80		IPR4348			None ▾
25	Yes	Yes	192.168.150.18	80	554	VS012(11)	MERIT-LILIN	000FFC2310AB	None ▾
26	No	Yes	192.168.150.22	80	554	IPR4348	MERIT-LILIN	000FFC249555	3 ▾
27	Yes	Yes	192.168.150.53	80	554	VS012(11)	MERIT-LILIN	000FFC2310A0	None ▾
28	Yes	Yes	192.168.150.60	80	554	VS012(11)	MERIT-LILIN	000FFC231004	None ▾
29	Yes	Yes	192.168.150.234	80	554	VS012(11)	MERIT-LILIN	000FFC2310B3	None ▾
				Submit		Search			

Step #7: Enter username and password, and RTSP for the camera.

Camera Setting										
Camera										
Camera Channel	Camera Name	Camera Source	IP Address	HTTP Port	RTSP Port	Username	Password	RTSP	Decode Ref.	Camera Disable
CAM01		IP Camera ▼	192.168.0.128	80	554	admin	RTSP/TCP ▼	6 ▼	OFF ▼
CAM02	IPS420	IP Camera ▼	192.168.150.10	80	554	admin	RTSP/TCP ▼	6 ▼	OFF ▼
CAM03		IP Camera ▼	192.168.150.22	80	554	admin	RTSP/TCP ▼	6 ▼	OFF ▼
CAM04		IP Camera ▼	192.168.0.130	80	554	admin	RTSP/TCP ▼	6 ▼	OFF ▼
CAM05	IPS418	Demo ▼	192.168.0.148	80	554	admin	RTSP/TCP ▼	6 ▼	OFF ▼
CAM06		IP Camera ▼	192.168.0.139	80	554	admin	RTSP/TCP ▼	6 ▼	OFF ▼
CAM07		IP Camera ▼	192.168.150.13	80	554	admin	RTSP/TCP ▼	6 ▼	OFF ▼
CAM08		IP Camera ▼	192.168.150.15	80	554	admin	RTSP/TCP ▼	6 ▼	OFF ▼
CAM09		IP Camera ▼	192.168.0.236	80	554	admin	RTSP/TCP ▼	6 ▼	OFF ▼
				Submit						

Note: Make sure that LILIN NVR or video decoder firmware is 1.0.47n or above.