

## Merit LILIN Application Note

### How to Enable Panoramic Camera User Interface

**Document Number** : A00072

**Date** : 04/01/2015

**Dept** : Technical Support, Taipei

**Subject:** How to enable LILIN Panoramic camera FD2452 user interface for NVR's monitor output.

**Description:** LILIN's panoramic camera contains different mounting styles, wall mount and ceiling mount. LILIN's panoramic camera also provides different window divisions such as 360° division, 180° division, and 120° division. A user can enable the settings within the PTZ menu to control the mounting style and a window division.

#### Products supported

NVR: NVR104, NVR109, NVR116, NVR408m, NVR100L, NVR200L, NVR400L, VD022

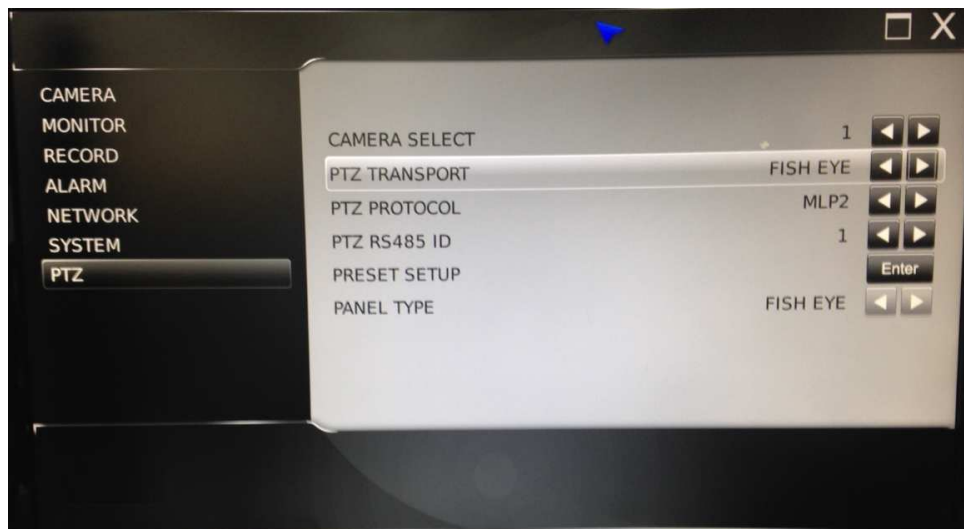
#### Firmware requirement

NVR or video decoder firmware: 1.0.54 or later

Navigator Enterprise: 1.0.0.90 or later

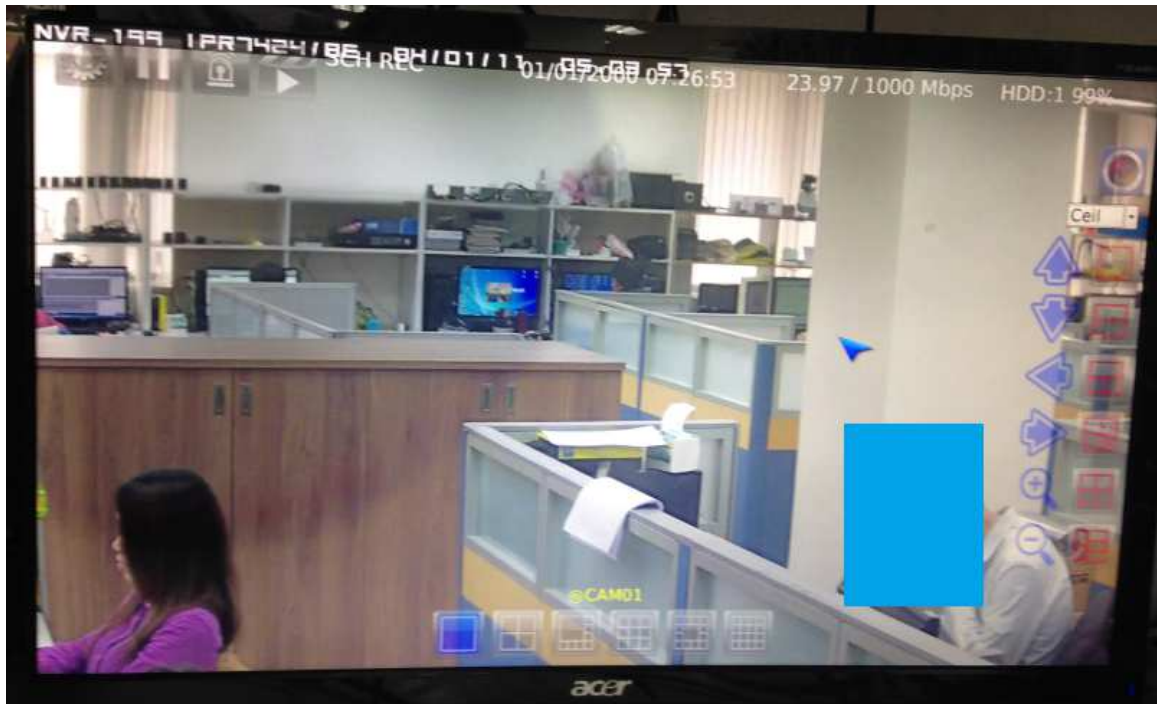
#### How to setup

Visit PTZ->PTZ Transport item and click the 'Right' button for choosing FISH EYE driver.



Click on the 'Square' button to return to live mode.

- Live view will display the pan, tilt, and zoom buttons to control ROI window.
- To change ceiling or wall mounting style, select “Ceil./Wall” from the dropdown box.
- To switch the window division, click on the window division buttons.



### Known issue

LILIN will soon provide a firmware for auto driver detection for a panoramic or a PTZ camera.