

## Merit LILIN Application Note

### How to Connect to a DVR or Navigator Enterprise via an NVR or Video Decoder

**Document Number :** A00071

**Date :** 03/27/2015

**Dept :** Technical Support, Taipei

**Subject:** How to connect to a DVR or Navigator Enterprise via an NVR or Video Decoder.

**Description:** How to connect to a DVR or Navigator Enterprise via an NVR or Video Decoder.

#### Products supported

NVR: NVR104, NVR109, NVR116, NVR408m, NVR100L, NVR200L, NVR400L, VD022

DVR: LILIN DVR 7 and 8 series

#### Firmware requirement

NVR or video decoder firmware: 1.0.54 or later

Navigator Enterprise: 1.0.0.90 or later

#### Applications

A video decoder displays video from a DVR or a Navigator Enterprise.

An NVR displays video from a DVR for a hybrid solution.

#### How to setup

Visit Camera->IP Camera Setup item and click Enter button.

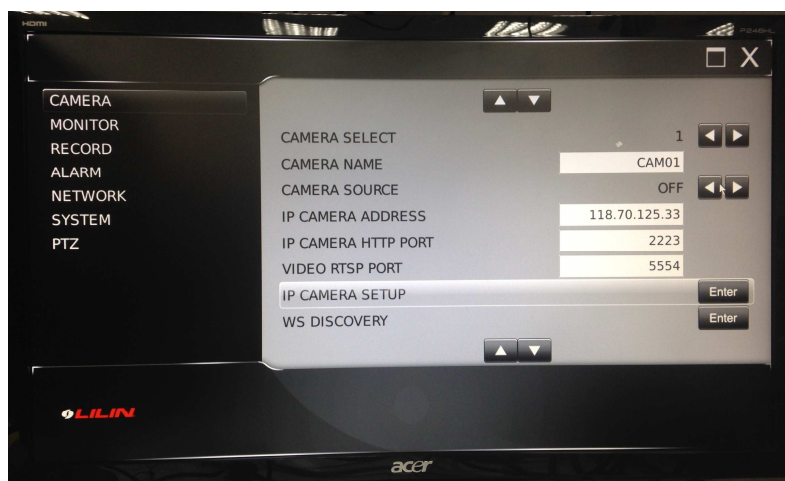
Enter IP address and port number for the DVR or NAV.

Default DVR username and password: admin and 1111

Default NAV username and password: admin and EMPTY

Default DVR port number: 80

Default NAV port number: 8080





Select the DVR/NAV Channel and map the DVR (1~16)/NAV (1~108) channel to the camera of the NVR or video decoder to finish setup.

