

LILIN Pro App User Manual

Table of Contents

Summary	2
LILIN Pro Main Features	2
Chapter 1 Live View	2
Chapter 2 Playback	3
Chapter 3 Add Devices for LILIN Pro App	4
Chapter 3.1 IPScan via Device Table	4
Chapter 3.2 Scan QR for Adding Devices	5
Chapter 3.3 Manually Add Devices	5
Chapter 4 View Setup	6
Chapter 5 Events	6
Chapter 6 Settings	7
Chapter 7 LILIN Event Cloud	7
Chapter 7.1 Paid Service	8
Chapter 7.2 Subscribe the Event Cloud	8
Chapter 7.3 Event Cloud Settings for AI Camera	9
Chapter 7.4 Event Cloud Settings for NVR/DVR	9
Chapter 8 Help	11

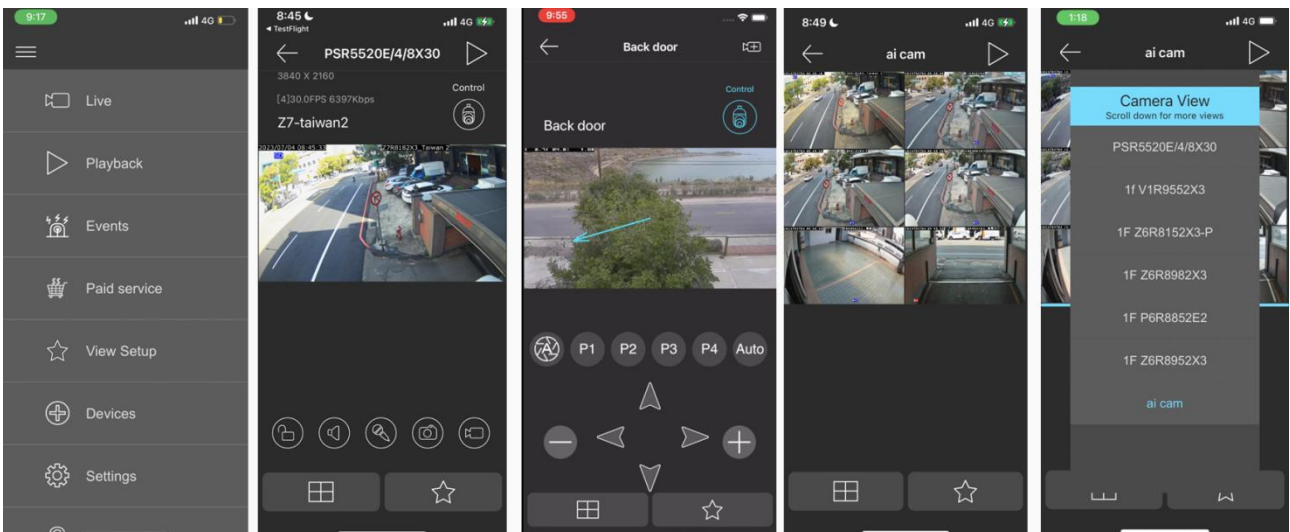
Summary

LILIN Pro is a mobile App for accessing live video and recording of LILIN camera, DVR/NVR, and NAV VMS on iOS and Android smartphones. Video backup and snapshots are also supported for accessing LILIN device.

Easy configuration of DVR/NVR QR code scanning for adding cameras. IPScan is supported for quick camera setup. Cloud camera configurations setup can be used for quick setup for family members. The App is ideal for an installer.


LILIN Pro Main Features

- Easy access to DVR/NVRs
- No cameras of DVR/NVRs configuration needed
- No window division configuration needed
- Alarm push notification
- IO Box integration
- IPScan for quick camera setup
- Remote video backup and snapshot
- On screen click-to-center PTZ control
- Control of IP camera's digital input
- Two-way audio communication
- High quality full HD H.264 and H.265 video streaming supported

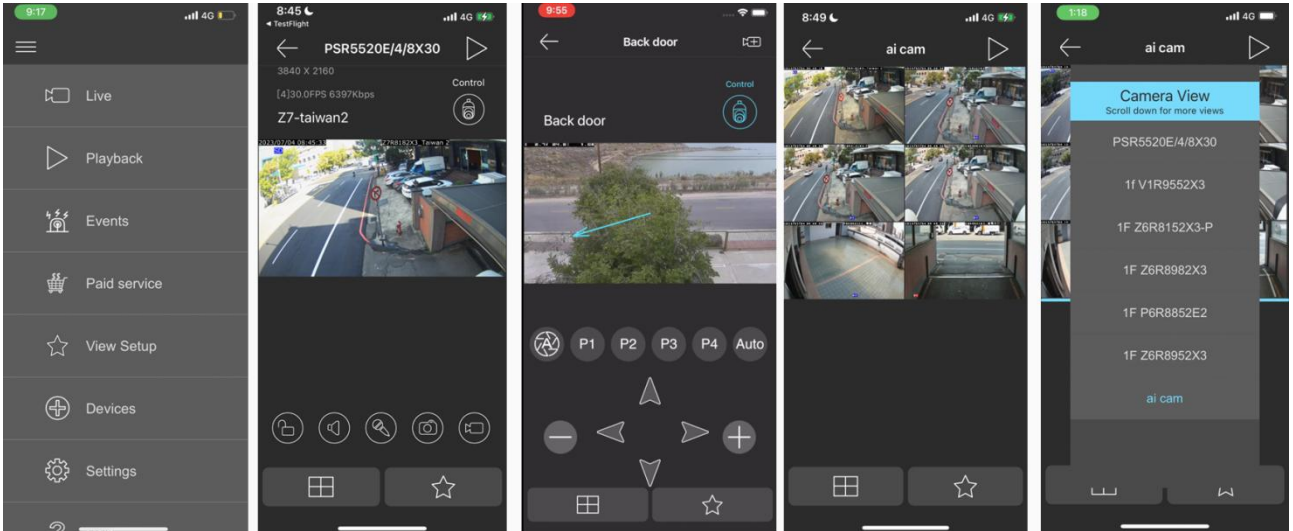


Chapter 1 Live View

Click on the “Menu” button and the “Live” button for accessing live video of cameras. Entering the “Live” page is going to show the last accessed view page.

 Quad button: Click on the Quad button is to show 4 cameras in a sequence of a view page. Swipe the cameras for next quad view. Click on a camera for full screen.

 View button: Click on the View button that allows choosing a view page.



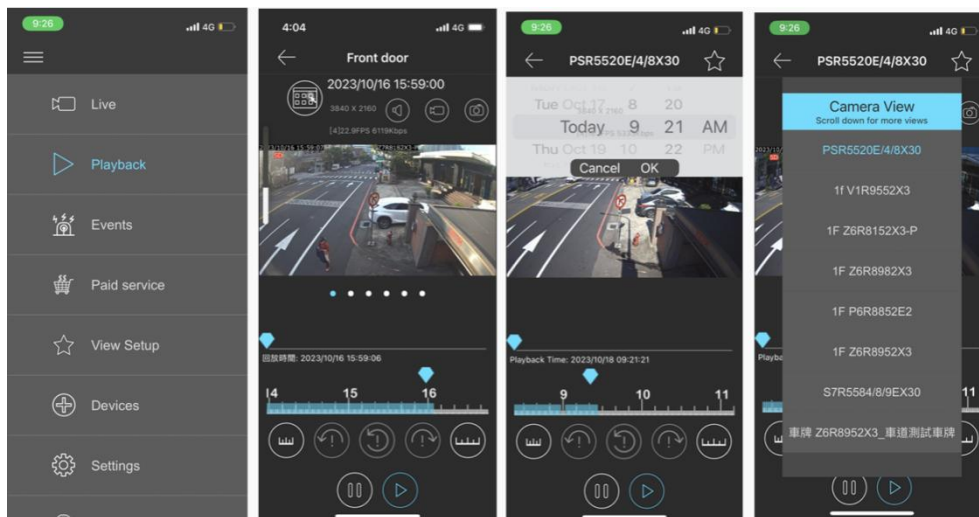
Chapter 2 Playback

Click on the “Playback” button from the menu. Enter playback page. Playback is able to play SD card on an IP camera, NVR/DVR, and Navigator.



Click on the “calendar” button. The calendar control shows up. Select the date and time for playback.

Click on the date control on the bottom for entering a date. Click on the timebar control for the time of playback.



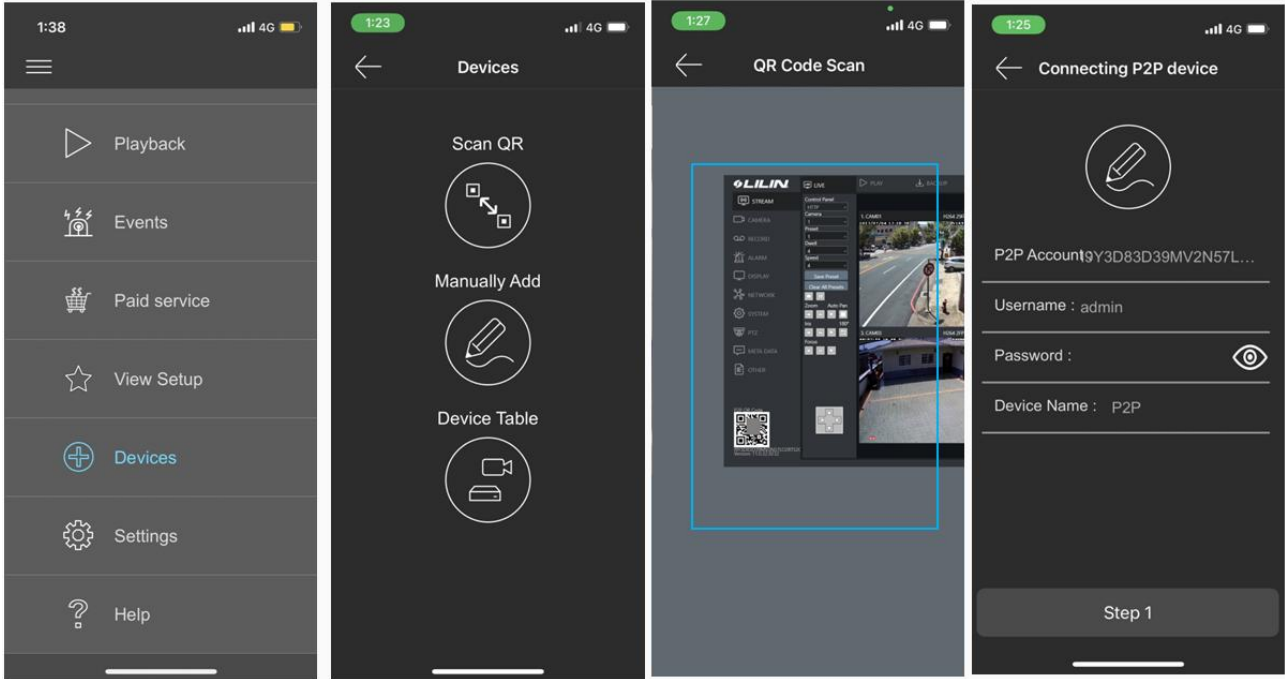
For controlling the playback video for LILIN products, click fast rewind, pause, fast forward, audio, video download, or quad view.

Video download: Click on the video download button for downloading video from LILIN products. Click on the quad view button for switching 4 camera views.



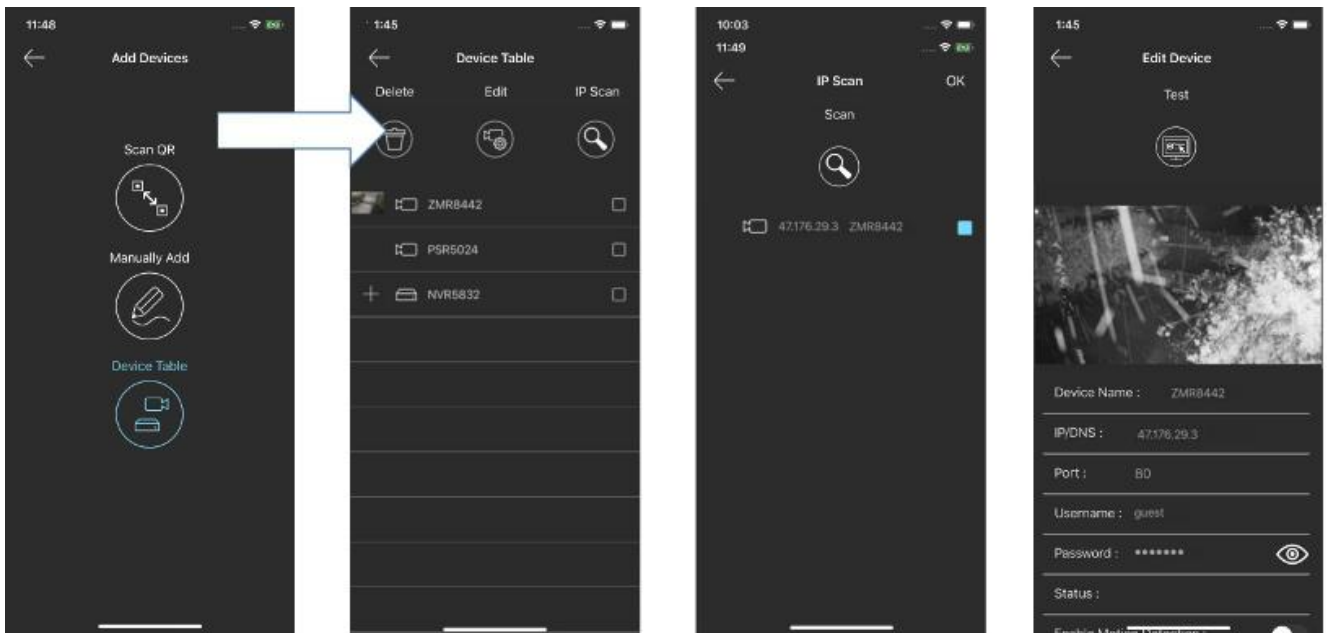
Chapter 3 Add Devices for LILIN Pro App

Click on “Scan QR” for adding an NVR/DVR. Point to the QR code of the NVR for scanning QR code license ID for adding the NVR/DVR. Once the NVR/DVR gets added, the NVR/DVR goes to the “View” automatically. Windows division is set automatically.



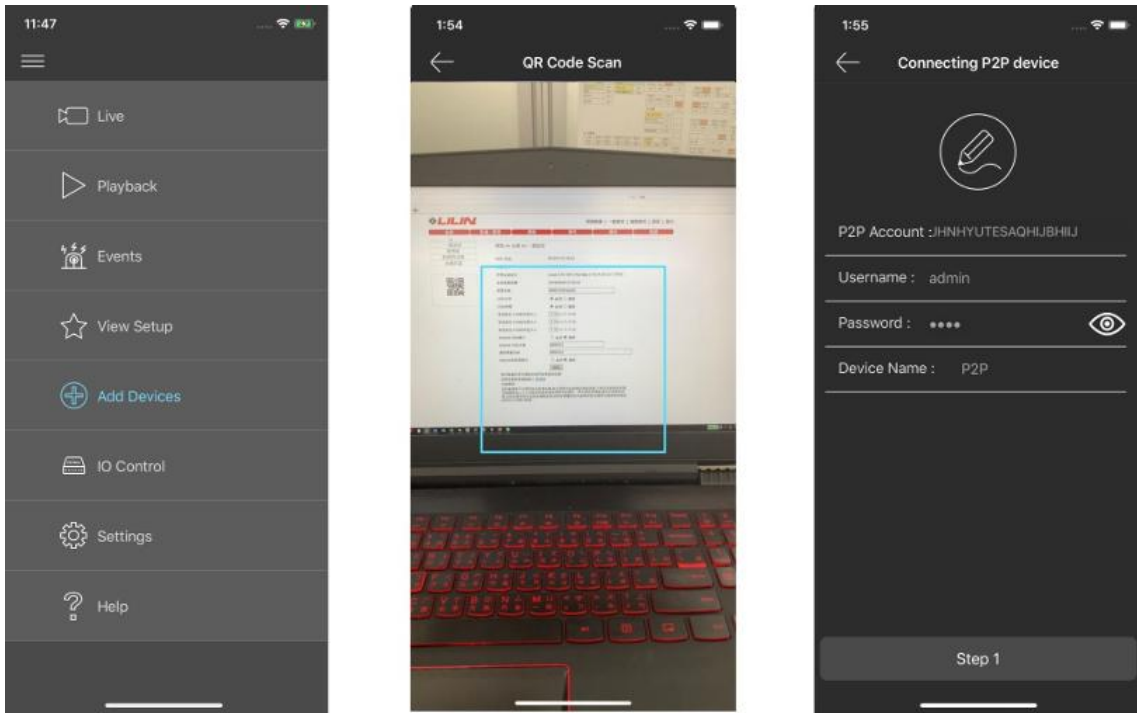
Chapter 3.1 IPScan via Device Table

Use IPScan for all LILIN devices within a network. Enter username and password for the device. Click on “Test” button for accessing the video. This is to use cameras and NVRs that are in a network. For Internet access, make sure that the IP addresses of cameras and NVRs are Internet IP addresses.



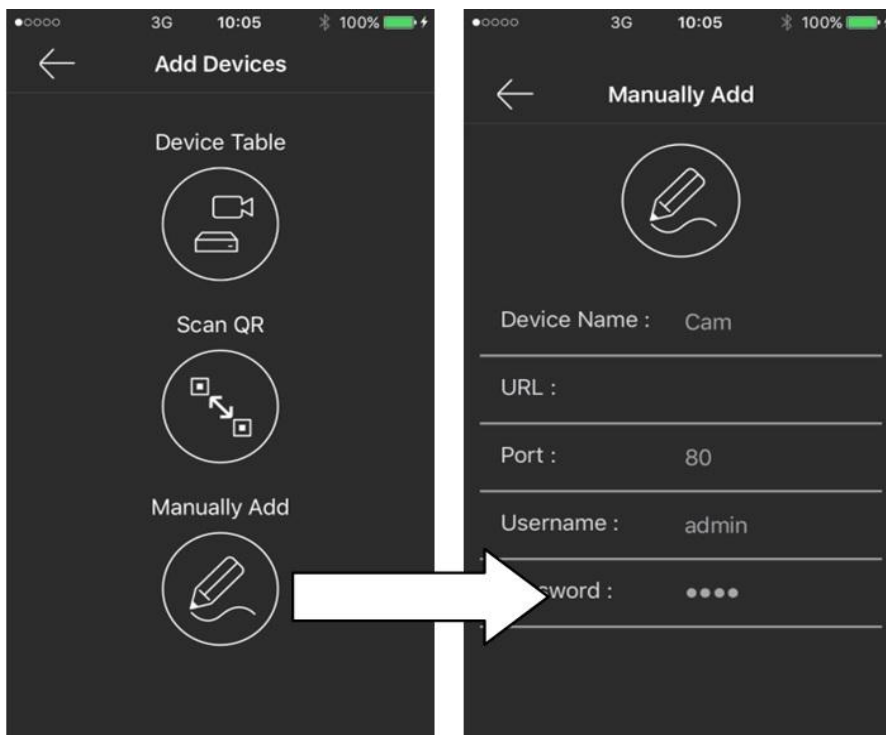
Chapter 3.2 Scan QR for Adding Devices

For LILIN Pro, you can use Scan QR code feature for IP camera and NVR. For Internet access, Scan QR code for P2P is a good choice. Use QR code scanner points to the “QR code” of the web page for accessing the NVR or IP camera by providing username and password.



Chapter 3.3 Manually Add Devices

A user can manually add device via Manually Add feature for entering the global IP address or LILIN DDNS of LILIN IP camera or NVR at the URL field. Enter the Port number for the camera or NVR. Finally, enter username and password to gain Internet access.



Chapter 4 View Setup

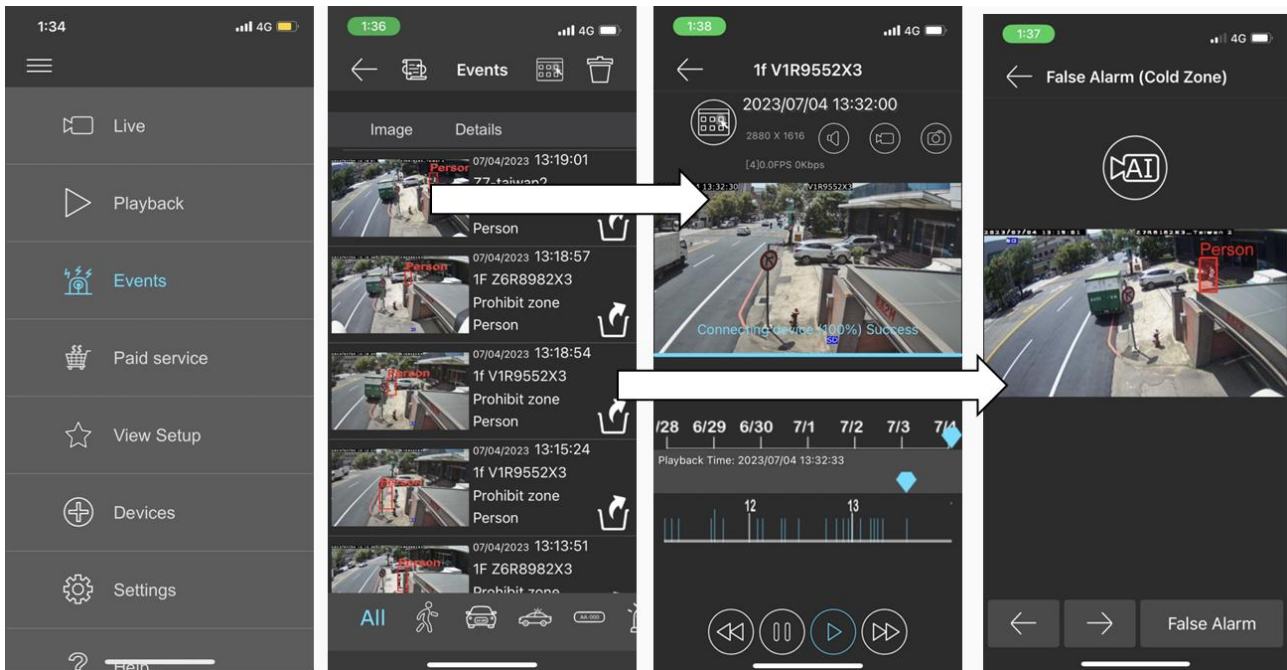
A camera view is to create a group of cameras for IP cameras or NVRs. This allows choosing cameras from different IP cameras or NVRs to form a view. Once a view is created, choose cameras from Device Table.

Icon	Description
	New View button: Click on “New View” button to create a new viewing group of cameras.
	Delete button: Click on “Delete” button for deleting a camera view.
	Edit button: Click on “Edit” button for choosing cameras from Device Table after selecting a camera view.

Chapter 5 Events

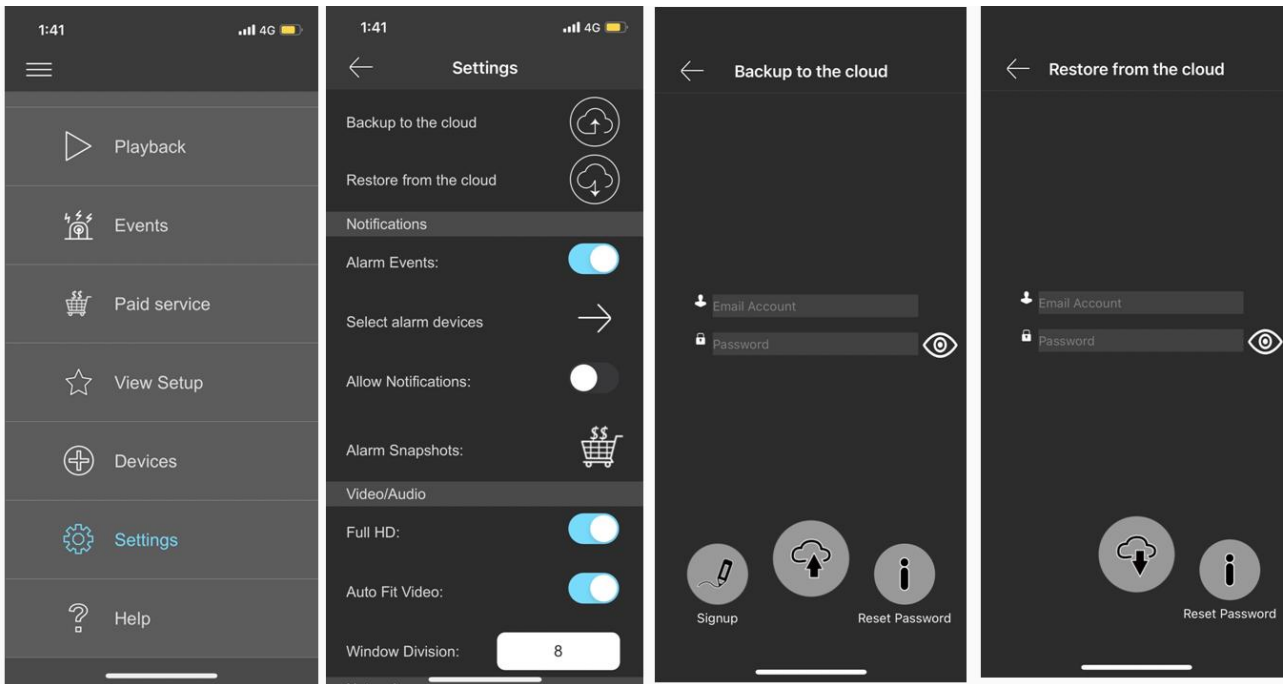
Once the AI detection, motion detection or digital alarm gets set on the camera or DVR/NVR, LILIN Pro App can get alarm push notification to a smartphone. Make sure that Alarm Notification gets set on the Setting page. Click on the event for playback of the recording. For more detail, see Playback for detail.

Icon	Description
	Delete button: Delete the event of the day.
	Audio button: To listen to the audio of the camera.
	Recording button: To record the backup or live video in mp4 of the camera.
	Snapshot button: To snapshot the video of the camera.



Chapter 6 Settings

The system settings are described below:

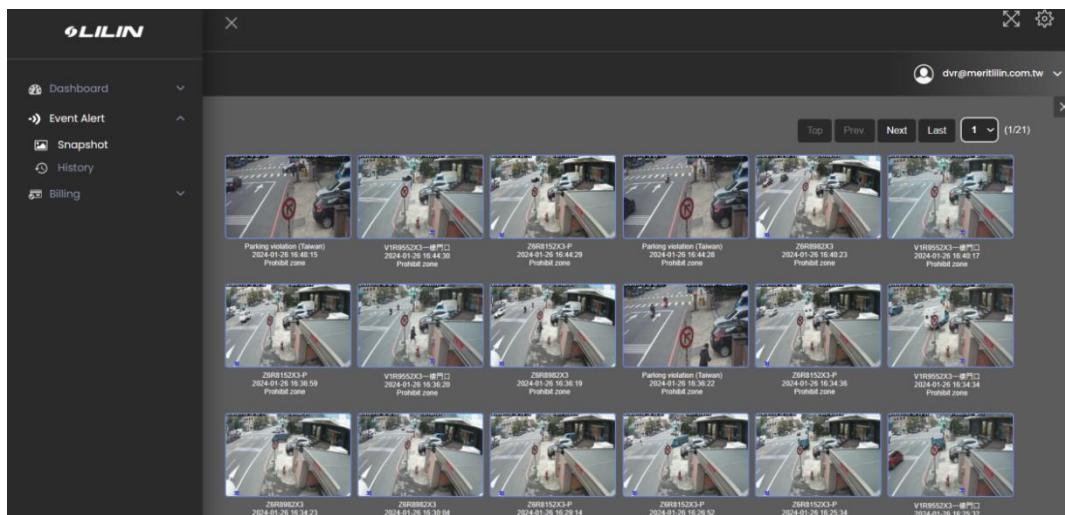


Once login to LILIN Device Cloud, you can manage a site for device status. You can also get alarm push notification if devices experience issues.

- Backup to the cloud: Backup the cameras configuration to LILIN Cloud.
- Restore from the cloud: Restore the camera configuration from LILIN Cloud.
- Alarm Notification: Enable alarm notification to LILIN Pro Apps.
- Full HD: Enable full HD video quality if bandwidth is enough.
- Video Auto Fit: Auto fix to full screen based on the screen size.
- Digital Output Dwell: The time of the digital output of a camera gets enabled.
- Language: Select your language as needed.

Chapter 7 LILIN Event Cloud

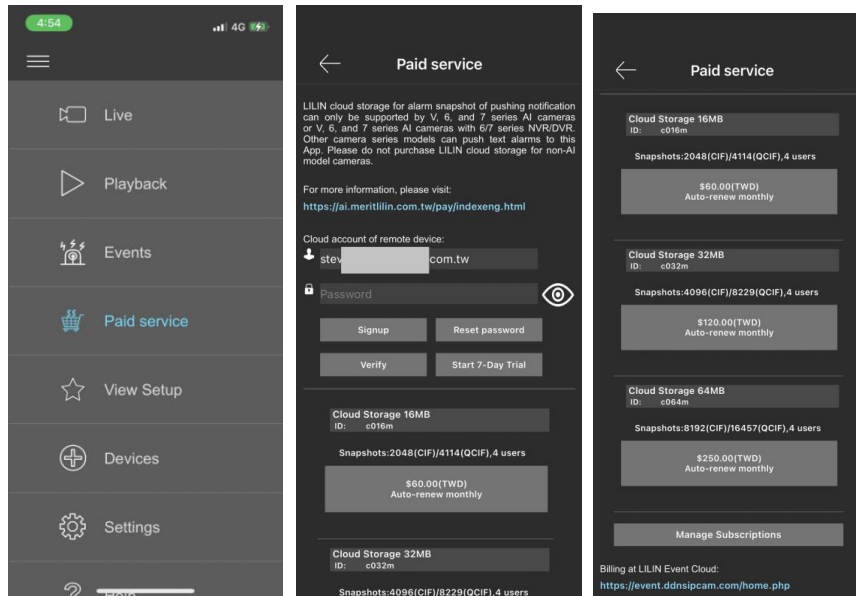
LILIN Cloud storage provides alarm snapshots of AI cameras stored on the cloud or used by LILIN Pro app. AI events of LILIN camera can push image notifications to LILIN Event Cloud. To access LILIN Event Cloud, visit <https://event.ddnsipcam.com/>.



Chapter 7.1 Paid Service

For the paid service of LILIN Event Cloud, please first click on “Paid Service”. Please enter the email for account and the password. You will receive confirmation email from iOS App Store or Google Play. There are four features:

- Signup: Create the account for LILIN Event Cloud.
- Verify: Check if the email account and password are created.
- Reset password: Reset the password
- Start 7-day trial (recommended): Try LILIN event cloud based on the account.

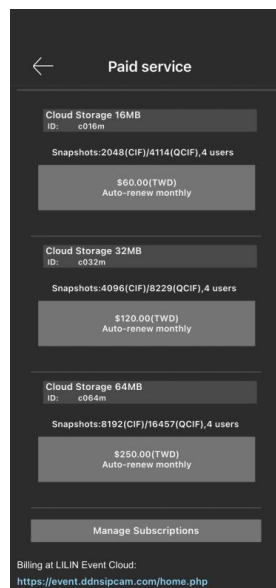


Note: There are up to 4 mobile phones with LILIN Pro App installed for accessing LILIN Event Cloud.

Chapter 7.2 Subscribe the Event Cloud

You can subscribe the account based on the monthly fee of storage size. Click on the storage button for the fee. You will receive a confirmation email for your subscription.

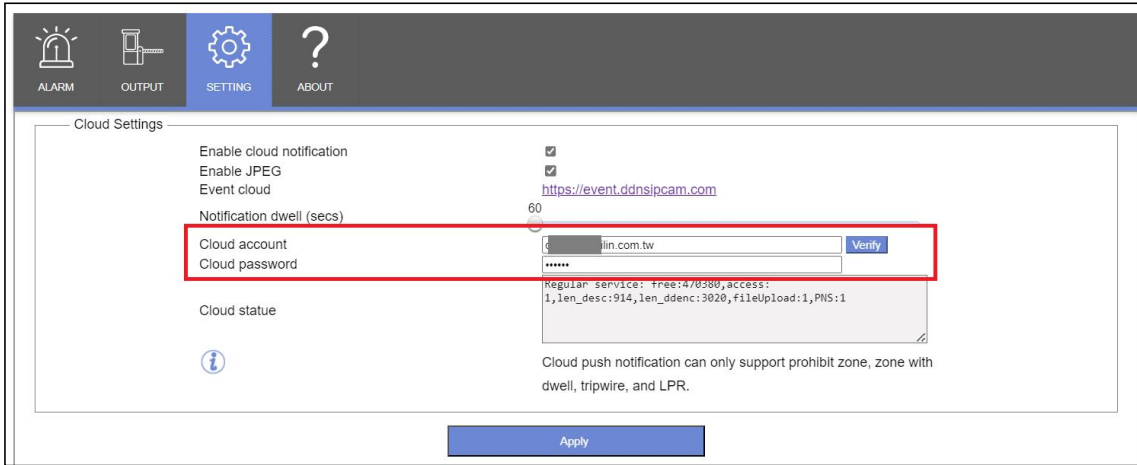
To cancel the subscription, please click on “Manage Subscriptions”.



Chapter 7.3 Event Cloud Settings for AI Camera

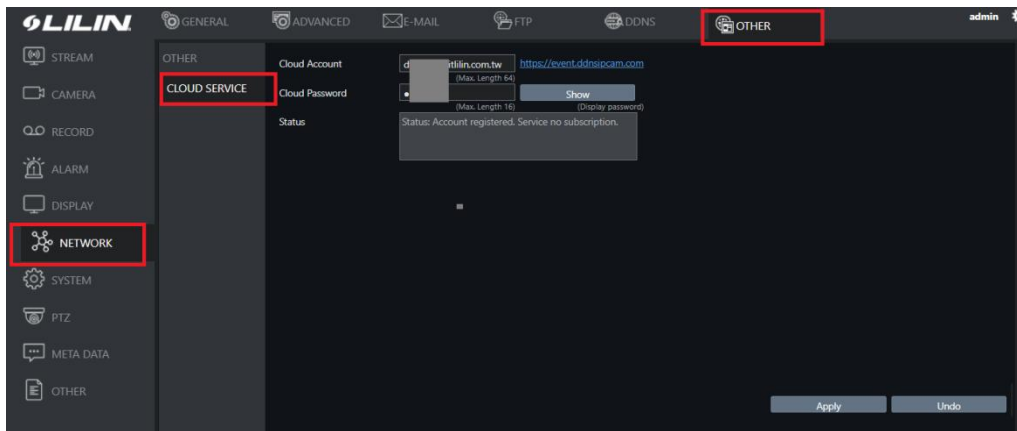
For AI camera settings, visit Setting page of the AI Plug-in. Make sure that the Cloud account and Cloud password are setup properly.

Click on Verify button which can communicate to LILIN Event Cloud to make sure if the notification is set properly.



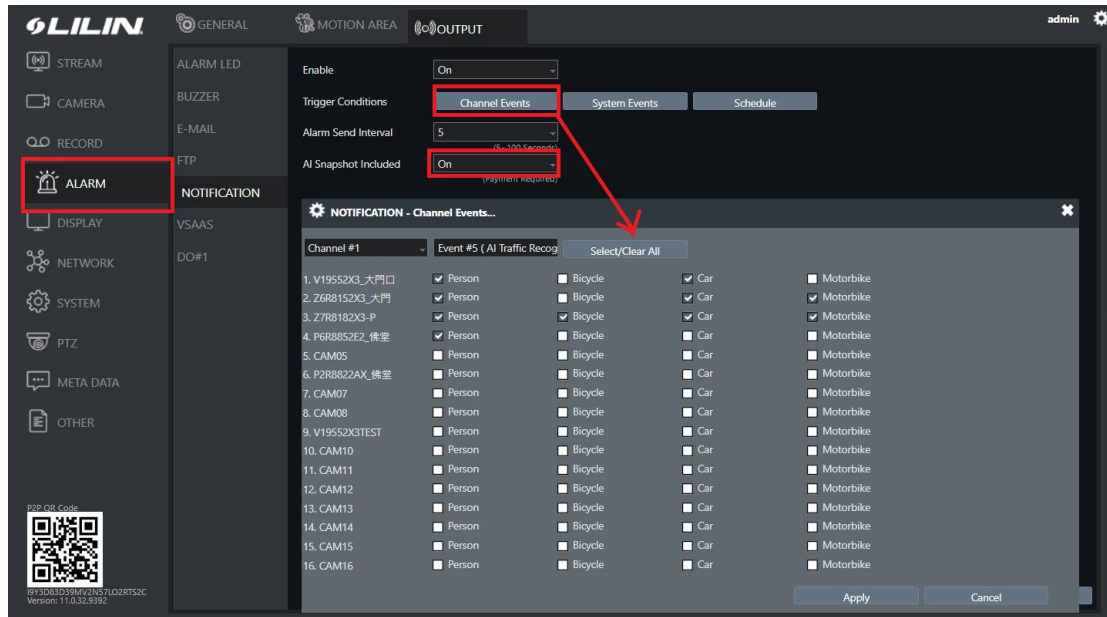
Chapter 7.4 Event Cloud Settings for NVR/DVR

Visit Network->Other->Cloud Service for alarm snapshots notification. Please setup Cloud Account and Password. After finishing the setup, click Apply button for communication status.



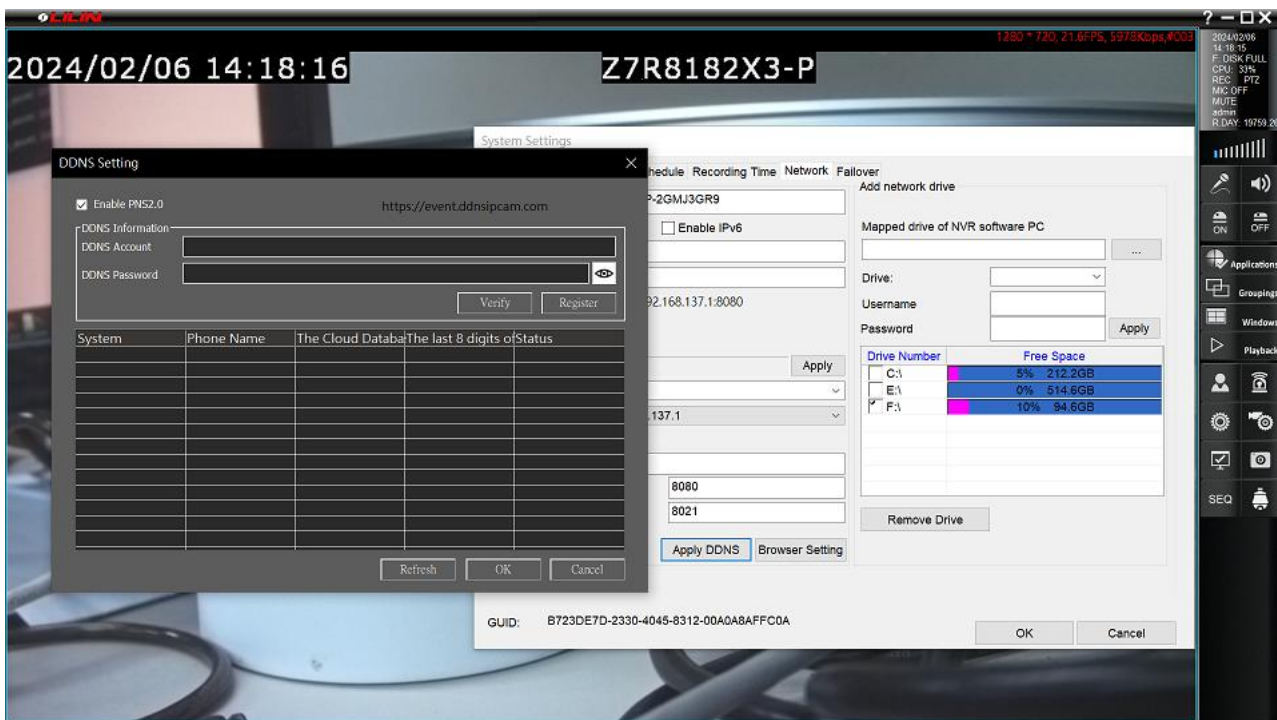
After finishing cloud settings, visit Alarm->Nonfiction->Output and click Channel Event button. Please select "Person", "Bicycle", "Car", and/or "Motorbike" for AI detection and notification.

Note: Only camera #1 ~ camera #4 are supported for alarm snapshot notification.



Chapter 7.5 Event Cloud Settings for NAV Recorder

Visit System->Apply DDNS->DDNS Setting for alarm snapshots notification. Please setup Cloud Account and Password. After finishing the setup, click Apply button for communication status.



Chapter 8 Help

Click on Help button. You are able to get the user manual for using LILIN Pro Apps.

