

Adding a LILIN AI camera to Navigator

Adding a LILIN AI camera to Navigator for Intrusion Zone Detection

To add an AI camera to the LILIN Navigator software to detect and log AI events in Intrusion Zones, follow the steps below.

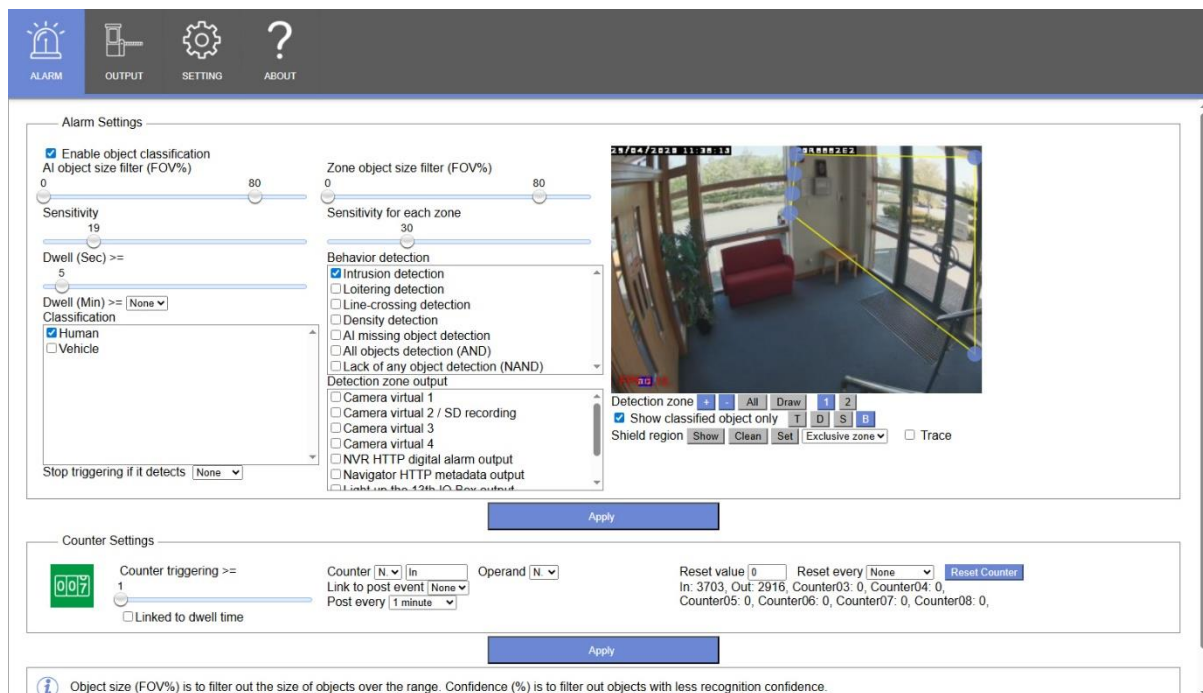
AI Camera

Log in to your AI camera and select the AI module icon. This will ask you to login to the camera's AI module. Enter the camera's administrator username and password.

Select 'Alarm' from the top bar.

This screen is where you will configure the desired AI behaviour and AI classifications that will trigger an event to an NVR.

In the example below the camera is set to log when a person enters the designated zone.



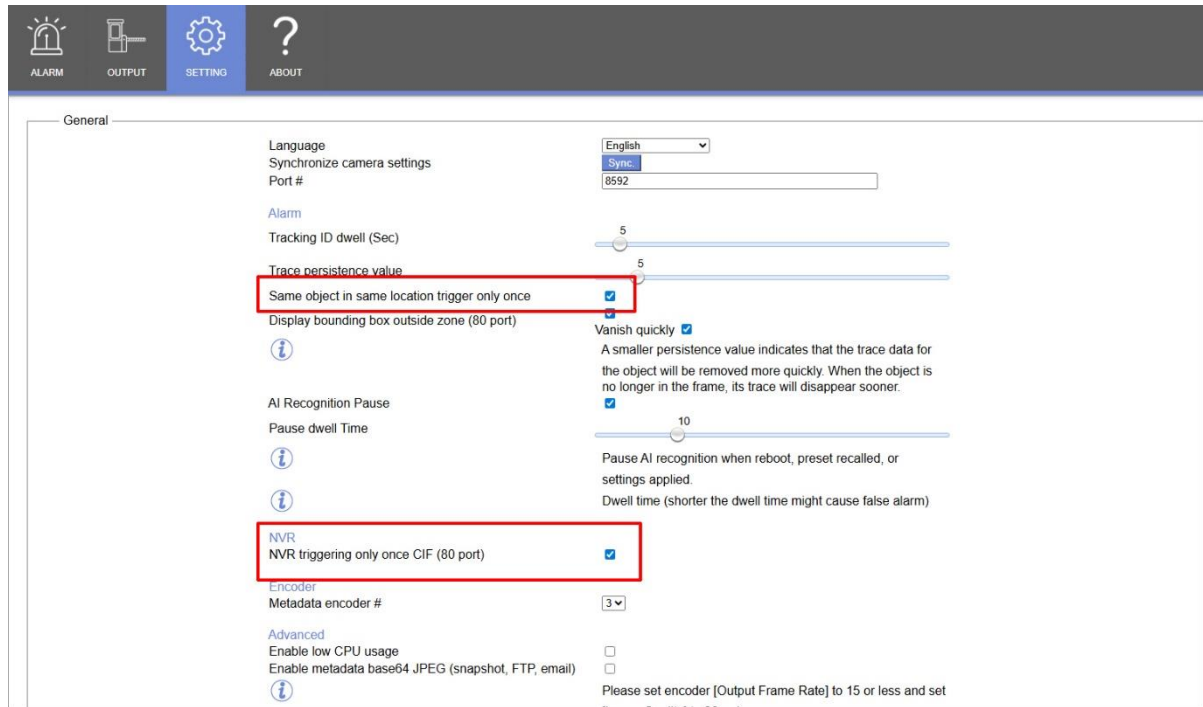
You can set up to 4 different AI zones with different behaviours and classifications.

Next select 'Settings' from the top menu bar.

Within this menu, ensure you have the following ticked:

Same ID Object in same location trigger only once

NVR/DVR/NAV/WS triggering only once CIF

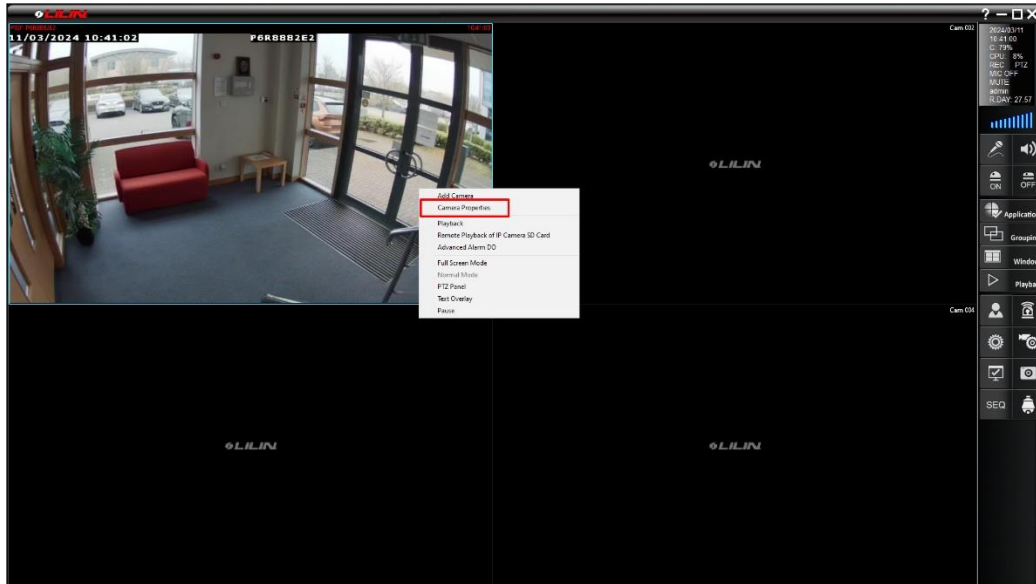


For a basic configuration, these should be the only options to change on this menu.

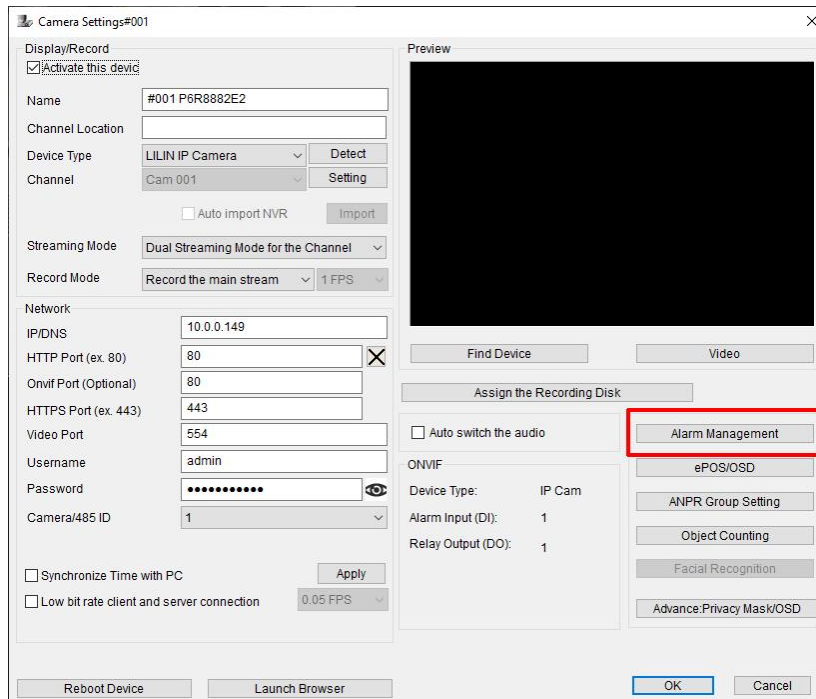
Navigator Software

This guide assumes that the camera has already been correctly added to the Navigator software.

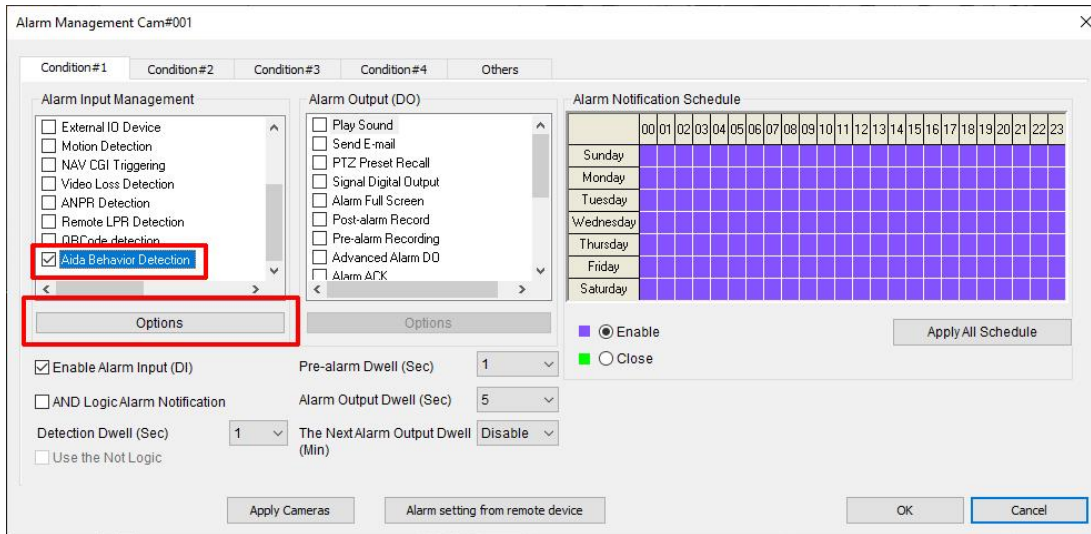
Right click on the channel of the camera you wish to detect AI events from. Select Properties.



From the camera properties window select 'Alarm Management'.

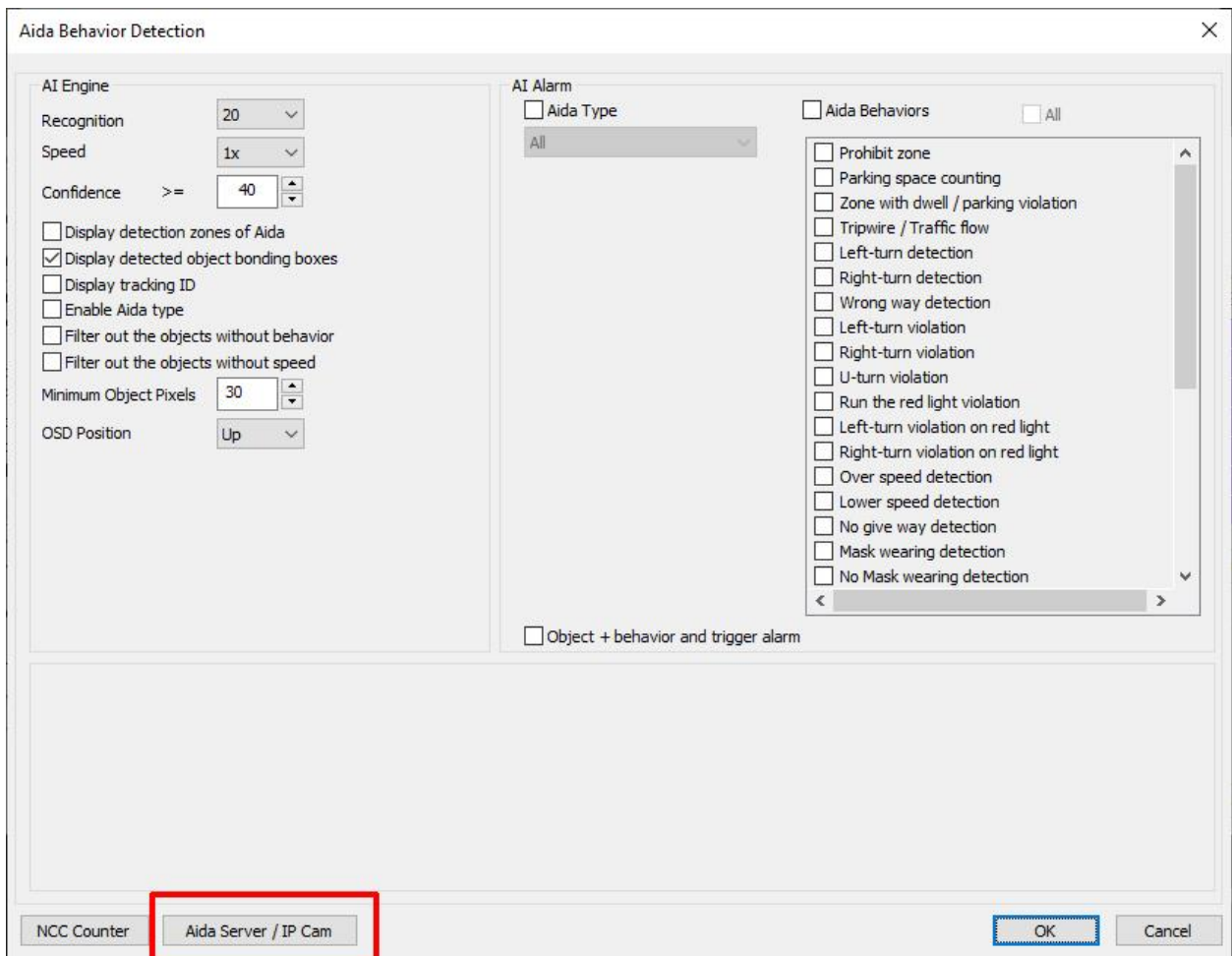


Under the Alarm Management window, ensure Aida Behaviour Detection is ticked and click 'Options'.



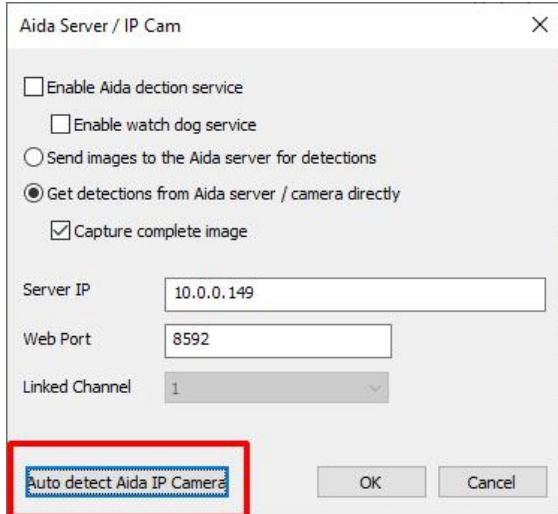
A further popup window will appear.

Click Aida Server / IP Cam.



Within the new popup window, select 'Auto Detect Aida IP Camera'.

This will automatically detect the IP address and port being used by the camera associated with this channel.

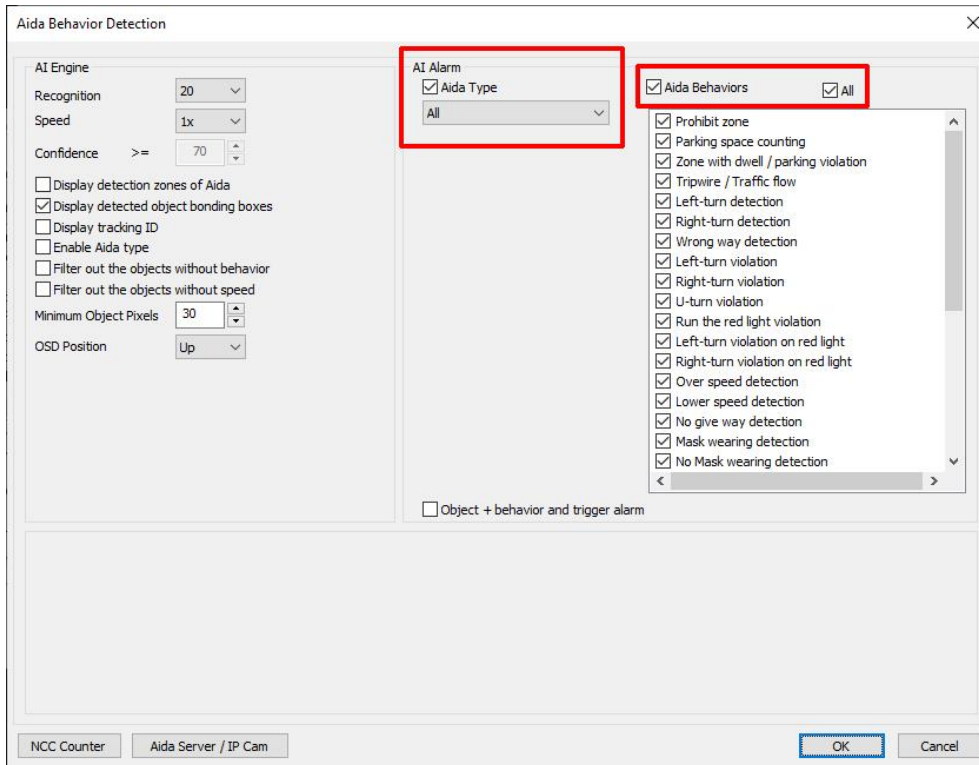


Now click OK, you will be taken back to the Aida behaviour detection screen.

Here is where you select which behaviours the software will receive AI alarms for.

It is recommended to select all Aida Types and all Aida Behaviours.

Even though you have selected all the detection options the camera will only detect classifications and behaviours selected within the AI camera plugin.



Click OK on all open windows, back to the Live Display.

Your Navigator system should now be logging AI events from the camera.



If required, it is possible to have the AI detection zone of the camera showing on the live camera image. This can be adjusted from the Aida Behaviour Detection window.

