



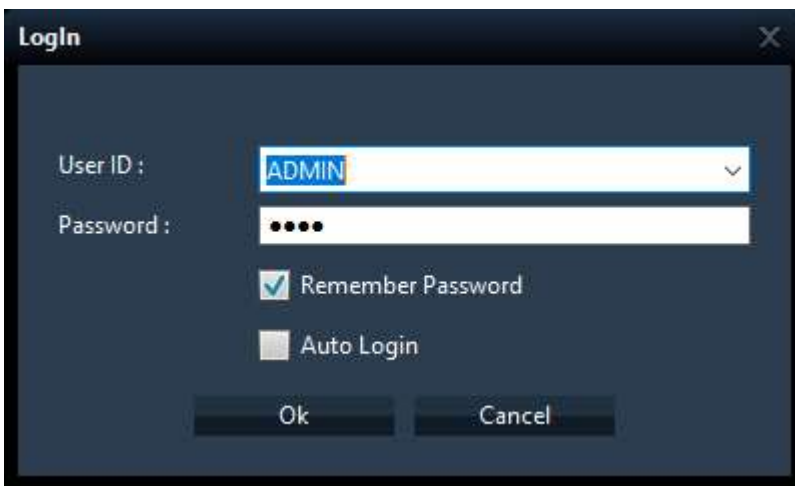
# Adding a DHD / AHD device to the CMS software

- 1) Install and Open the CMS software, then log in

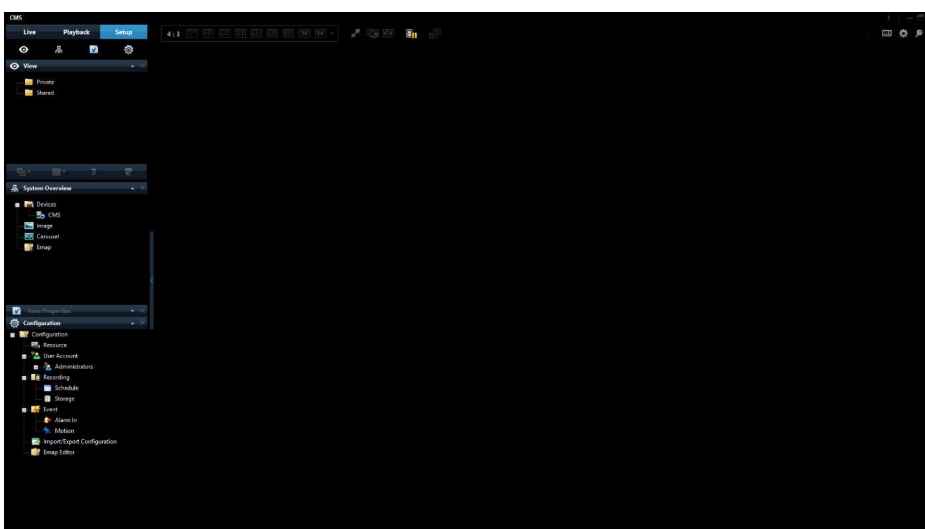
The default username and password are:

UN: ADMIN

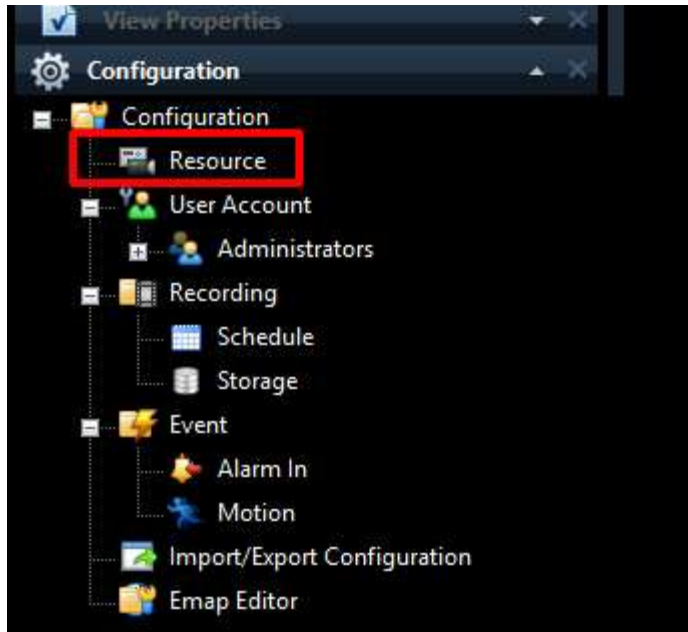
PW: 1234



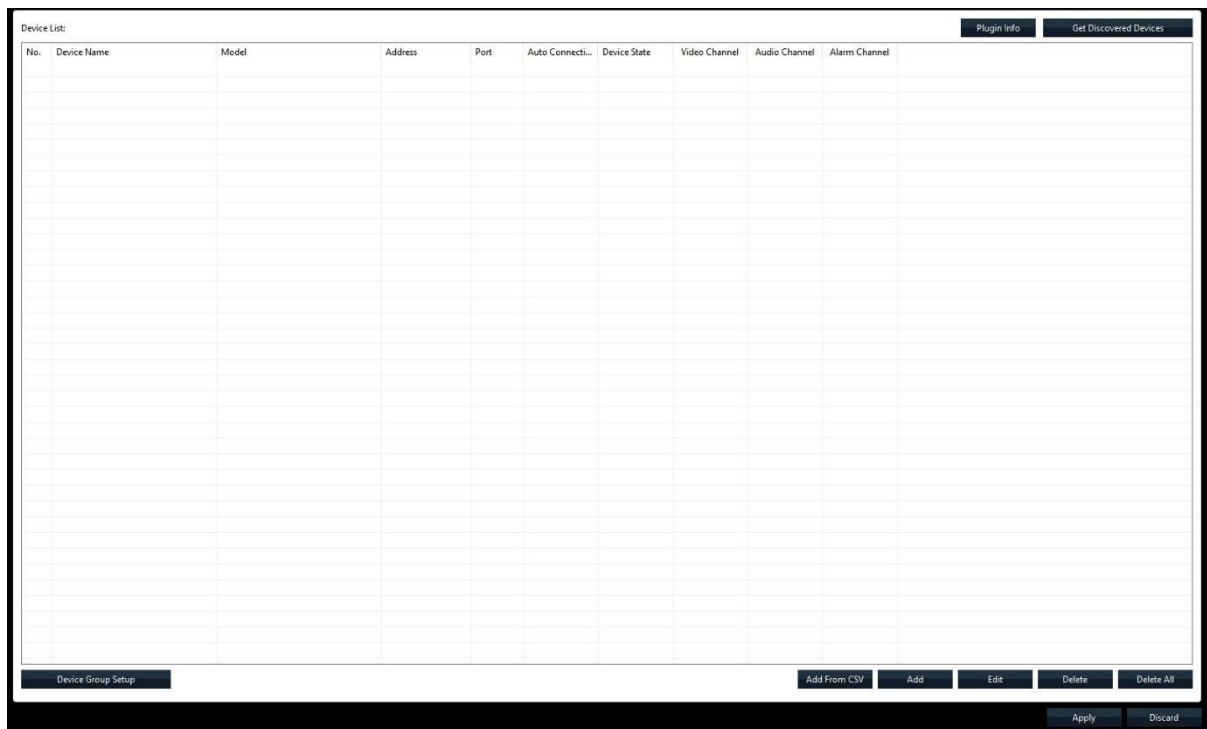
- 2) The software will launch showing a screen below



- 3) From the menu bar on the left you will see a window labelled 'Configuration'. Within this window you will see an option labelled 'Resource'.



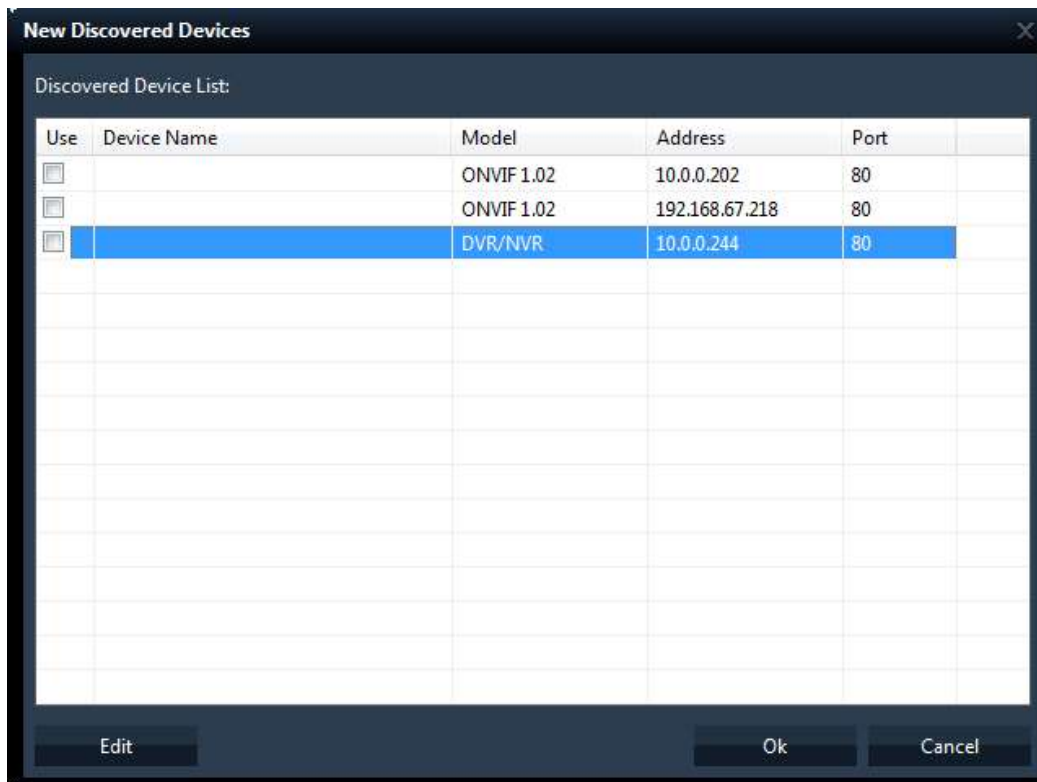
- 4) Click this and a device list window will appear.



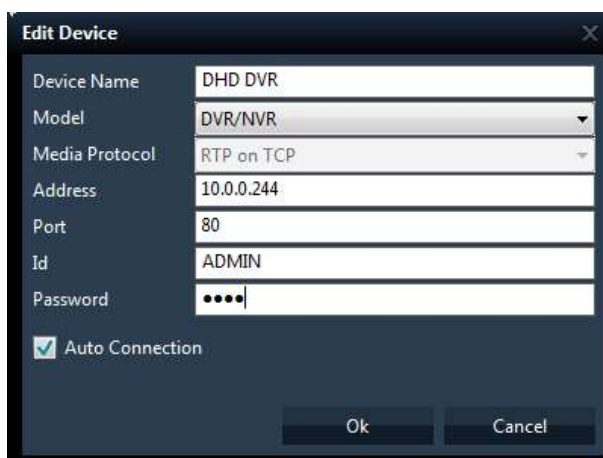
- 5) Click 'Get Discovered Devices' located in the top right hand side of the discover window.



- 6) The software will now scan the network for any AHD / DHD or ONVIF compliant devices.

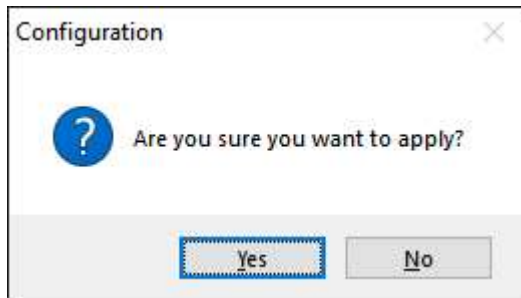


- 7) Double click on the device you want to import in to the CMS software. A device window will open, you will need to fill in the missing information for the device.

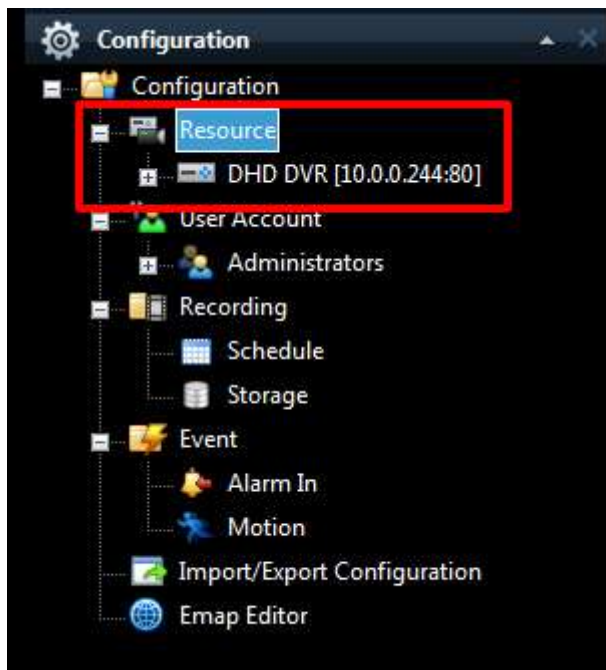


8) Once all the details have been filled out correctly, click 'OK'.

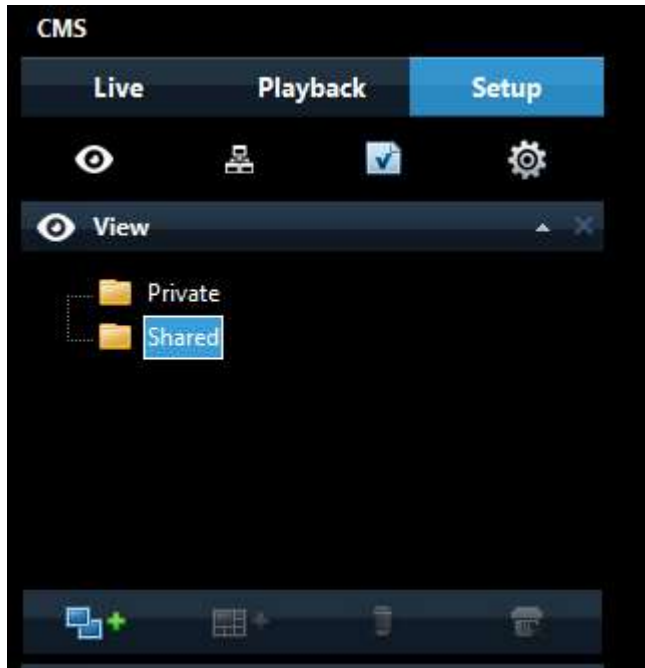
9) You will see the device populate on the Discovery window. Click 'Apply' in the bottom right hand side. You will be asked to confirm that you want to apply the settings.



10) You will now see a device has been added below the 'resource' tab.



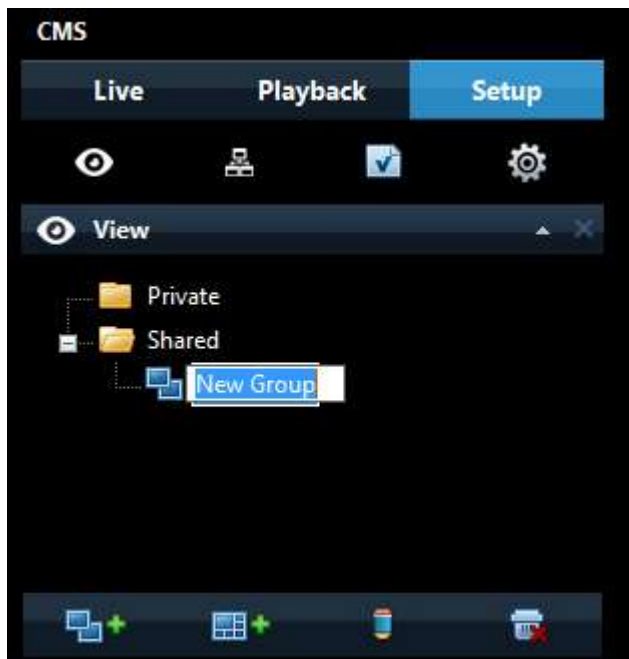
11) The next step is to set up the required view. To do this, select either 'Shared or Private' from the view section of the left-hand menu bar.



At the bottom of the 'View' section you will see the icon below. Click this



A new group will appear, name this as required.





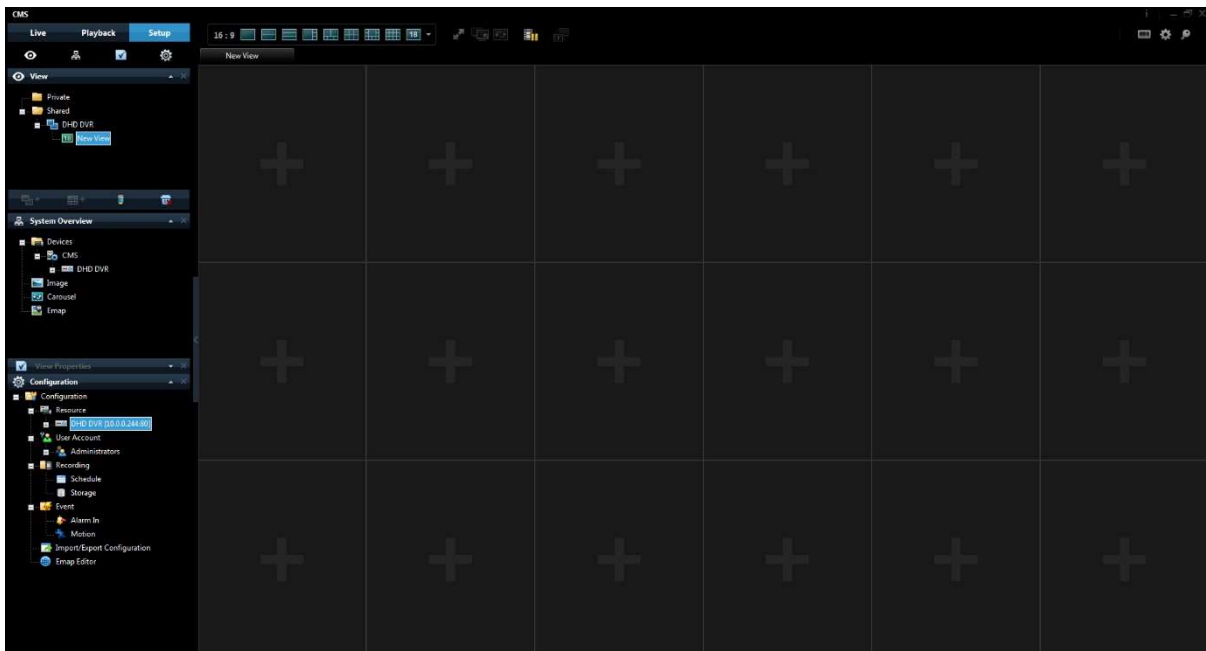
Once the group has been named, click on the icon shown below. This will pop out a menu where you can choose the number of cameras to be displayed.



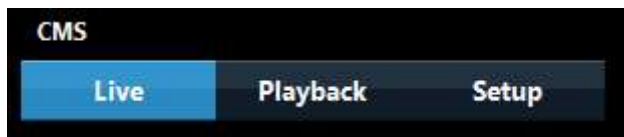
Select the required view.



Once the required view is selected (In this example we have selected 18 division) you will see the right-hand window change, you are now able to add cameras to the windows with a + showing.

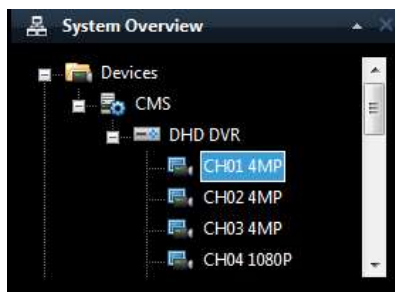


12) Before attempting to add a camera, select 'LIVE' from the top of the left-hand menu bar.



Once Live is selected the menu bar on the left will change. You will see an area labelled 'System Overview'.

Under System Overview will be the device that was added in the previous steps. Click on the drop down + icon and you will see a list of all the cameras connected to the device.



Simply click and drag the channels in to required location on the right-hand window. The camera channel should now be displayed in that location.

*Each camera will need to be added individually, you do not have to add all cameras to the live view if not required.*

