

The truck weight scale XK3190-D10 integration of LILIN NAV

Document A00175

Date : 2018/11/22

Dept: Product Management, Taipie

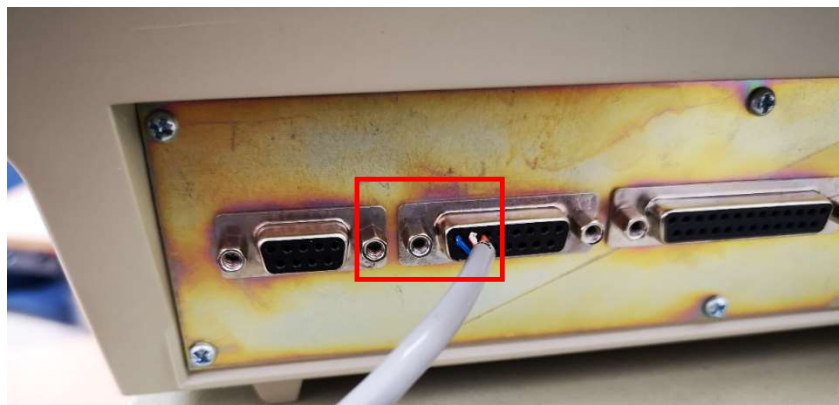
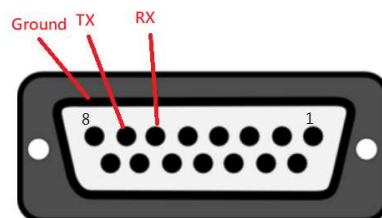
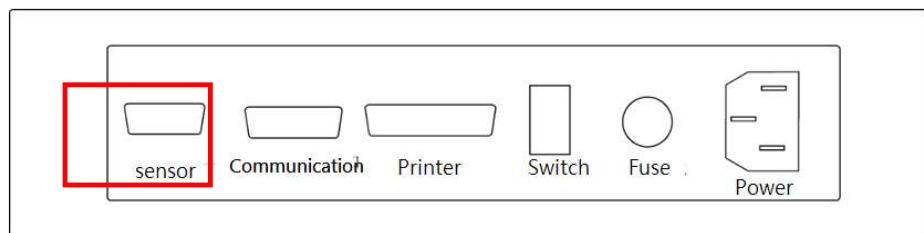
LILIN Navigator VMS is able to read a truck weight using a XK3190-D10. The reading of a truck weight is very important information which can be used with LILIN number plate recognition system for a transportation companies. A transportation company is able to use LILIN NAV VMS to monitor the goods transported from site A to site B. An operator is able to search the number plate of a truck traveling from site A to site B with a scale reading via LILIN NAV for managing lost prevention system.



XK3190-D10 front panel diagram



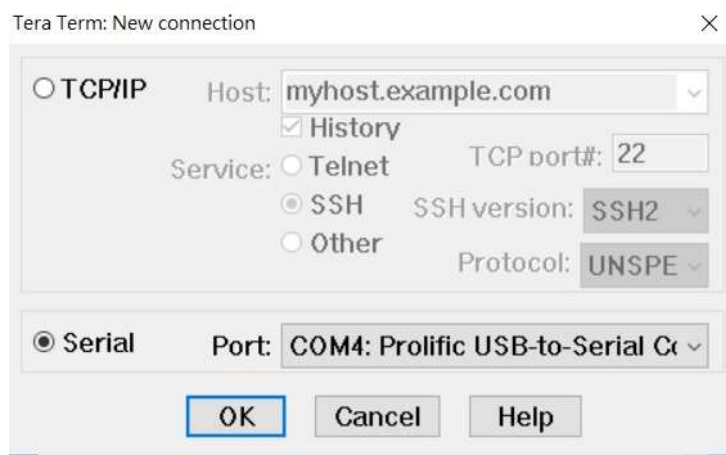
XK3190-D10 back panel diagram



Use Tera Term to read RS-232 protocol.



1. Click on File->Open menu.
2. Select the COM port detected.



3. You can start to capture the protocol. Please save the log file.



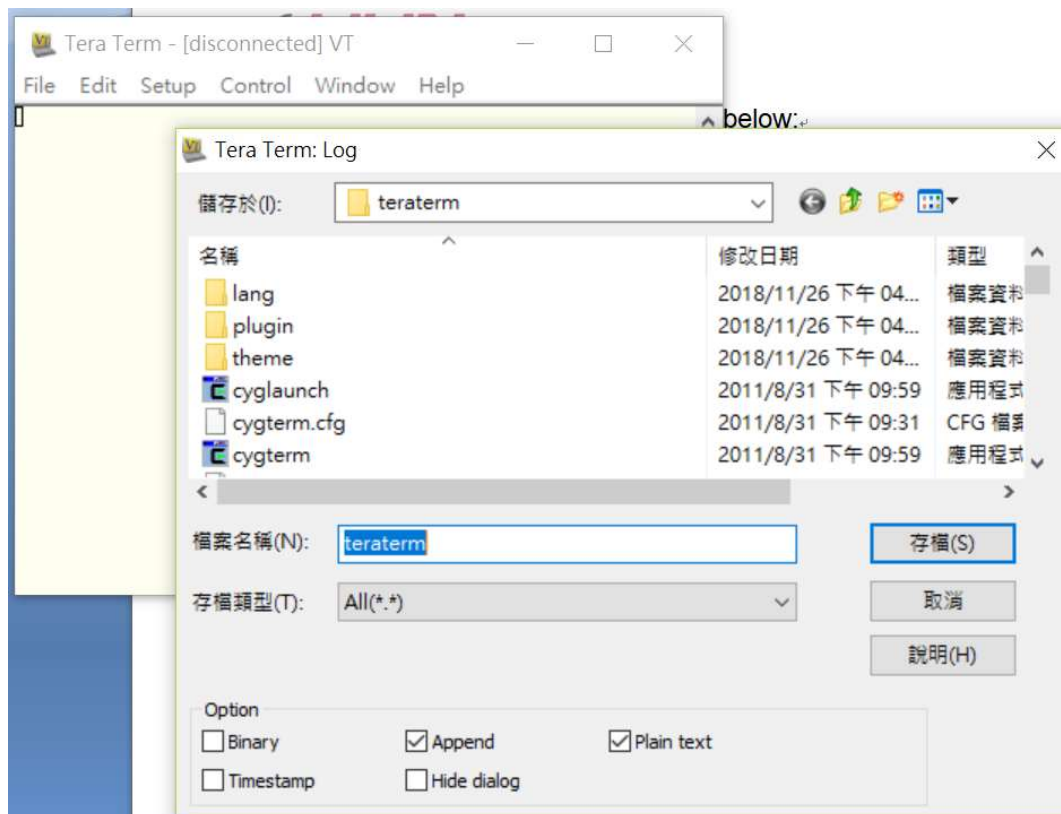
4. XK3190-D10 setting steps

- Step1. Press [Parameter(#8)] Button
- Step2. Press [Goods No.(#1)] Button
- Step3. Press [Input] Button
- Step4. Press [Customer(#2)] Button
- Step5. Press [Input] Button
- Step6. Press [Note(#3)] Button
- Step7. Press [Input] Button

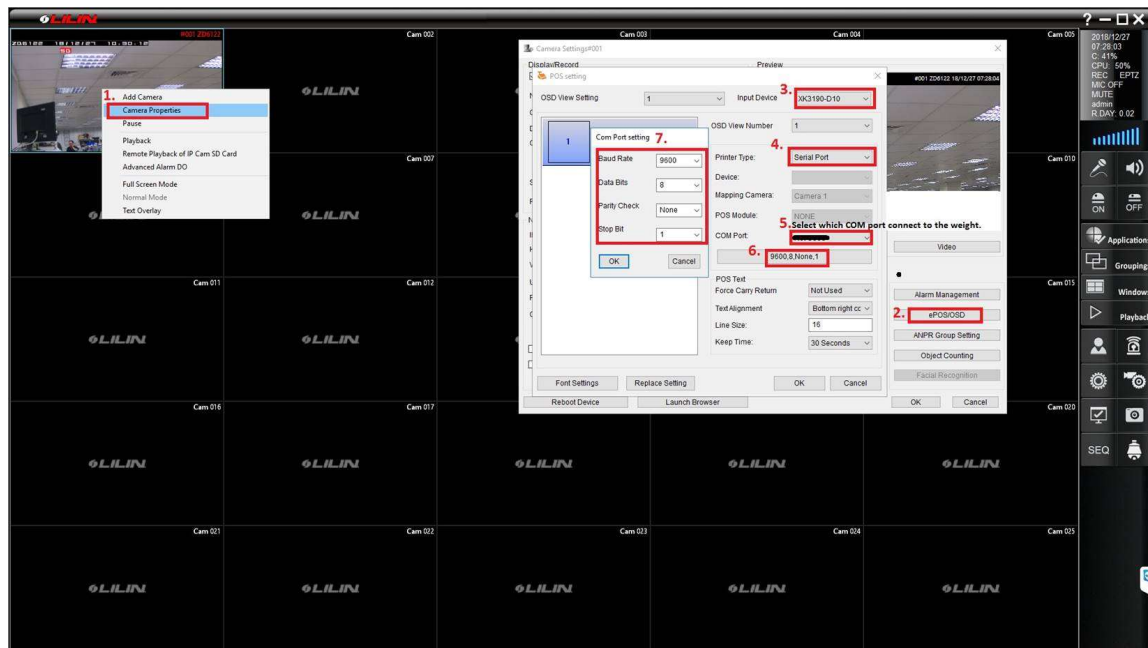
5. You can see that the system is setup as below:



6. Go to File->Log. Save the log as plain text. Send back the log file back to LILIN.



7. Setup in NAV where NAV uses Serial Port communication for the weight scale. Follow the steps below for receiving the weight data from the scale.



Contact

Contact <http://lilin.zendesk.com> for technical support.

For more information, visit www.meritlilin.com.