

## Merit LILIN Application Note

### IVS2.2 cameras on NVRs

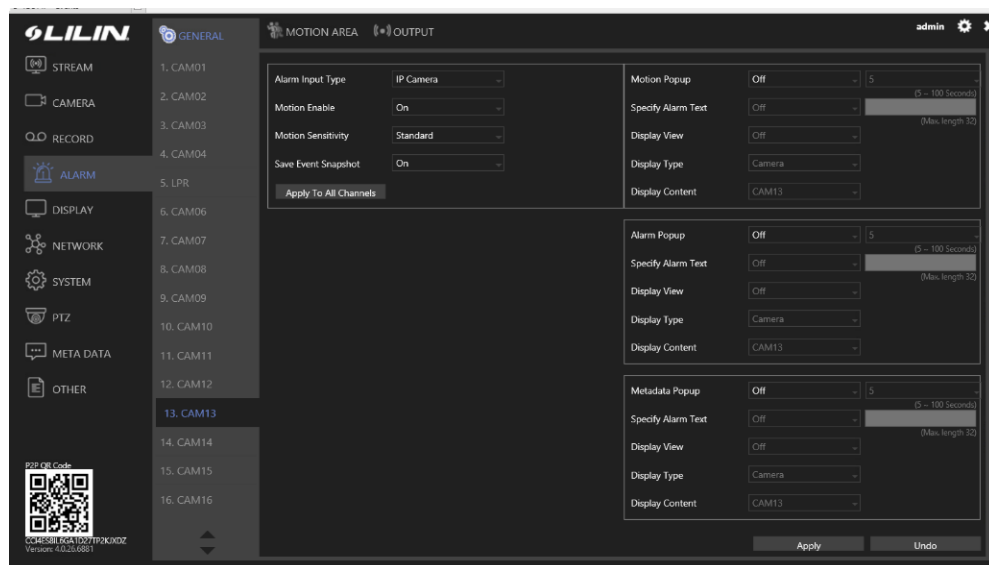
Document Number : A00313

Date : 2021/05/25

Dept: Technical Support, Taipei

First set up IVS2.2 on your camera, then you can activate it on your NVR.

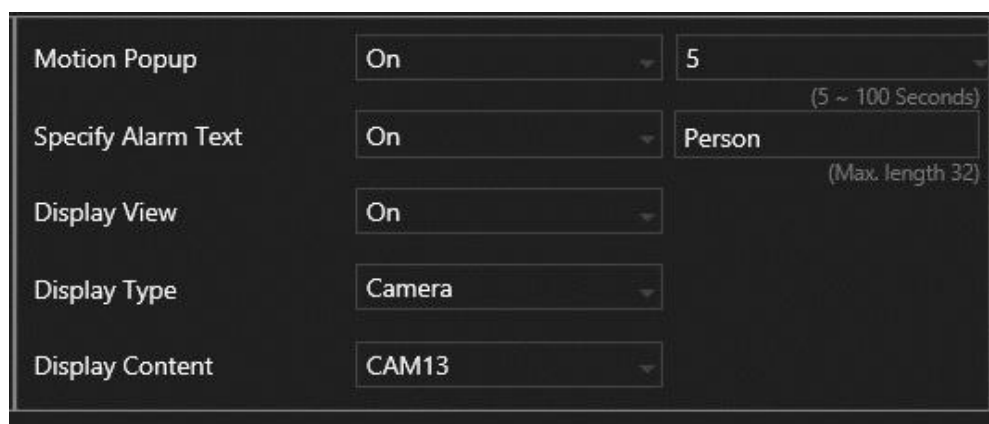
- Enter the Alarm Menu on the NVR, select your camera channel number.



Change **Alarm Input Type** to IP Camera  
Select **Motion Enable** to ON.  
Remember to press apply before leaving the page.

The NVR will now receive IVS2.2 alarms from the camera as motion alarms.

- You can customize what the HDMI display does when receiving an alarm.





Turn **Motion Popup** to ON and select a time between 5-100 seconds – this is the dwell time that the view and/or text you choose will be displayed.

**Specify Alarm Text:** you can choose to have a message displayed over the live channel (HDMI) for the selected dwell time.

**Display View:** turn this to on if you want the displayed live screen to change upon receipt of an alarm.

**Display Type:** This can be either Camera (a single channel) or View (multi-screen, fully customizable).

**Display Content:** if Camera is selected in display type you can select a specific channel (camera) to pop up full screen upon an alarm event.

If View is selected in display type you can choose to display any of the multiscreen views upon an alarm event.

After the preset dwell time the live (HDMI) display will revert to the screen it was displaying before the alarm.

Below is an example of the settings from above image.

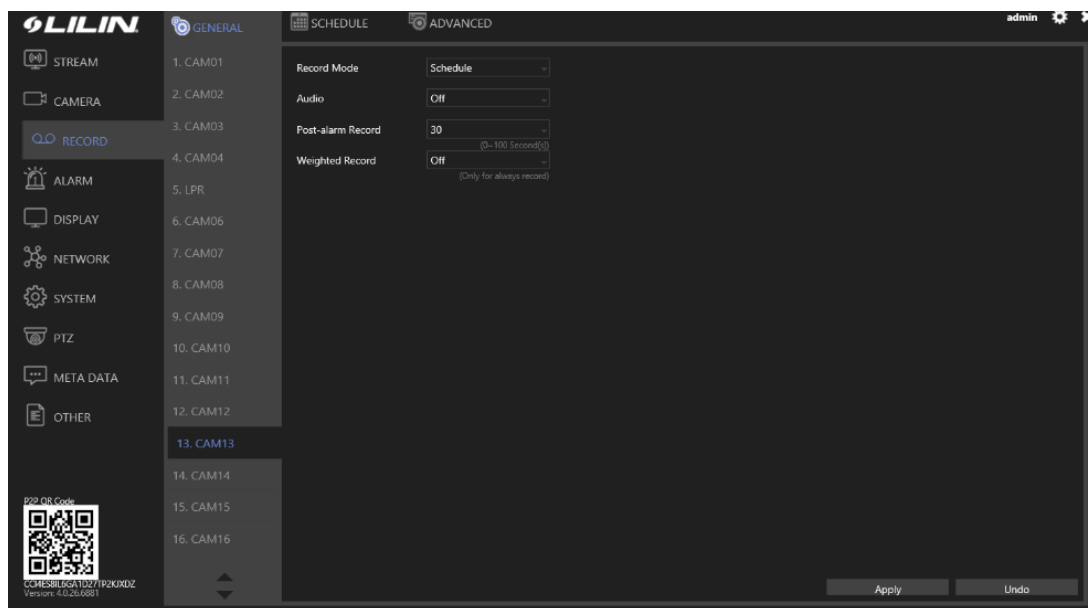
**Before Alarm**

**During Alarm**



- Setting how often the NVR receives alarm events from camera.

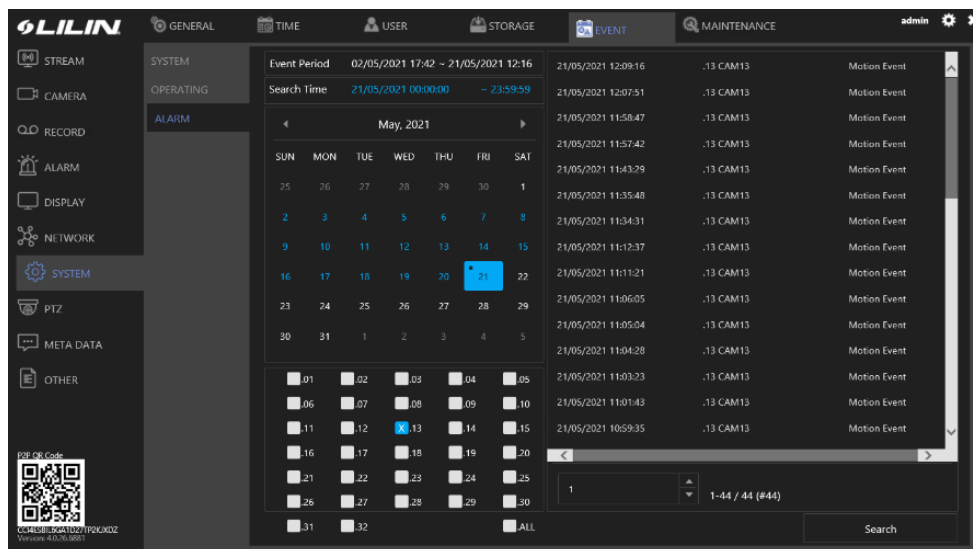
If an object is in a detection zone on the camera, they could be creating multiple alarms. You may not wish for the NVR to receive/display all these alarms.



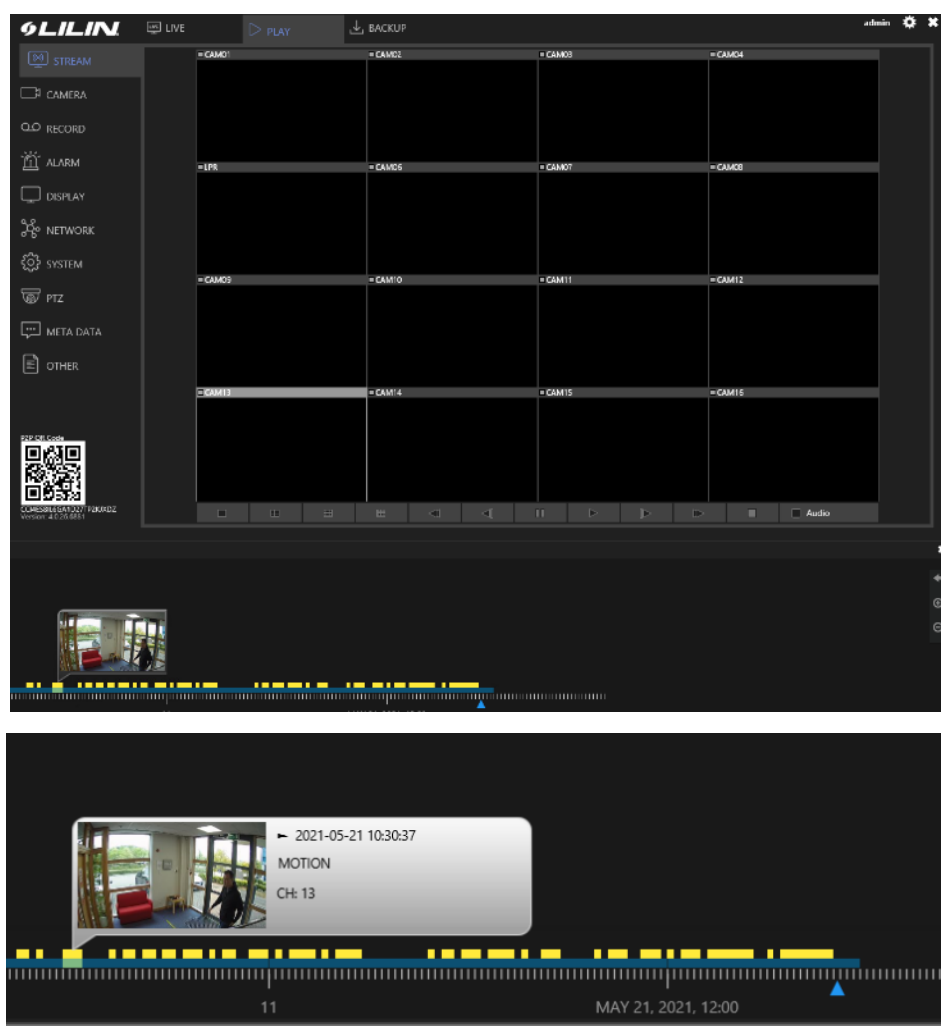
Enter Record setup and choose camera channel. To select how often the NVR receives (registers) alarms, change the **Post-alarm Record** time to your desired time (between 1 to 100 seconds.)



If 30 seconds is chosen, the NVR will register an alarm from the camera then ignore alarms for the following 30 seconds before registering alarm again. Alarms can be viewed under System/Event (on the browser)

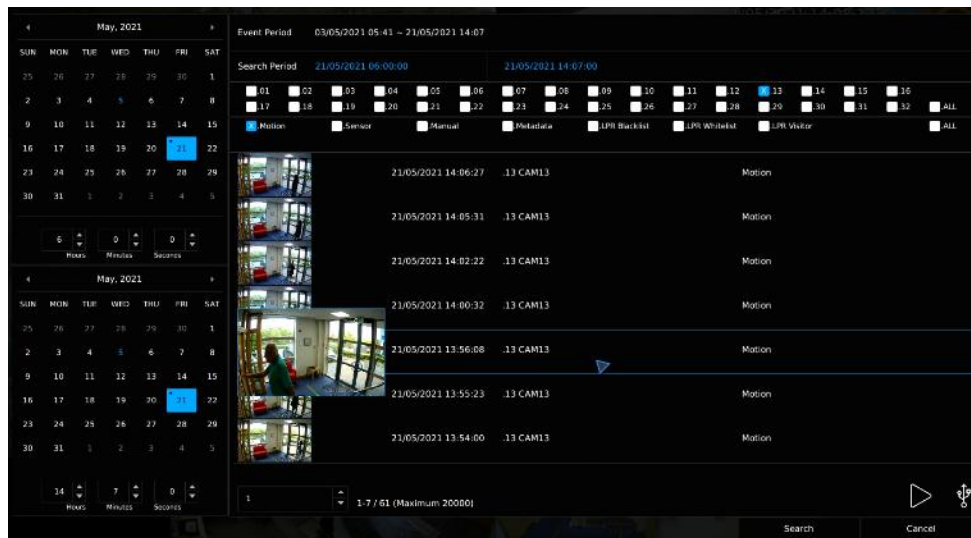


Alarm Events can also be viewed in playback on the browser – on a timeline bar at the bottom.



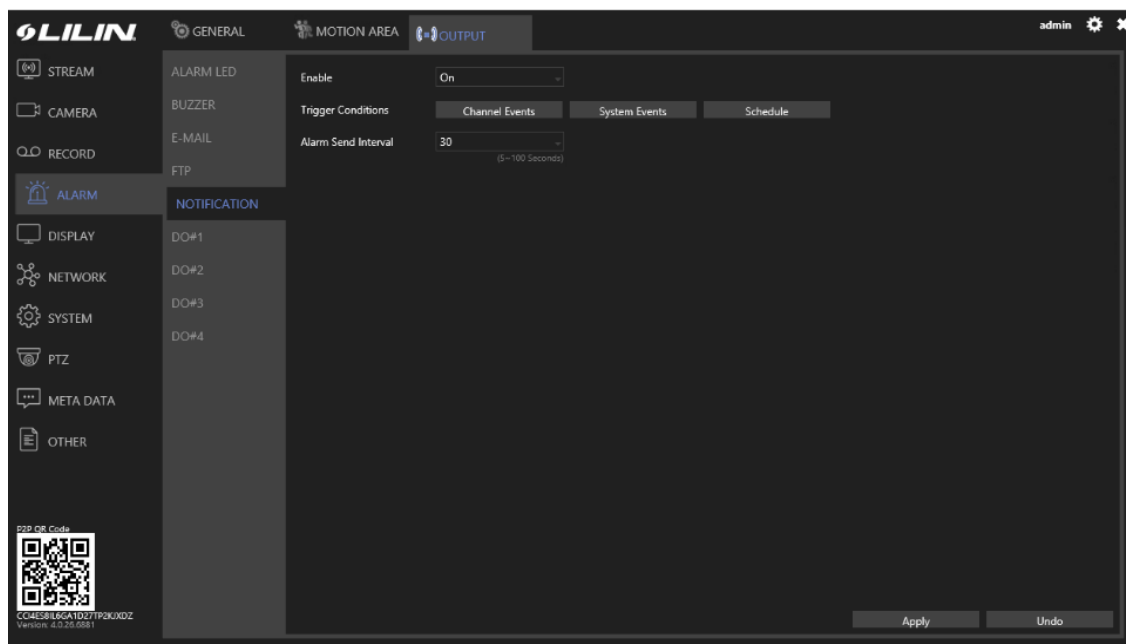


From the live image shown on the HDMI alarms can be accessed by clicking on the shortcut in the top left of the screen. Here alarms can be filtered by date, channel & alarm type. It includes a snapshot and you can access playback of the alarm

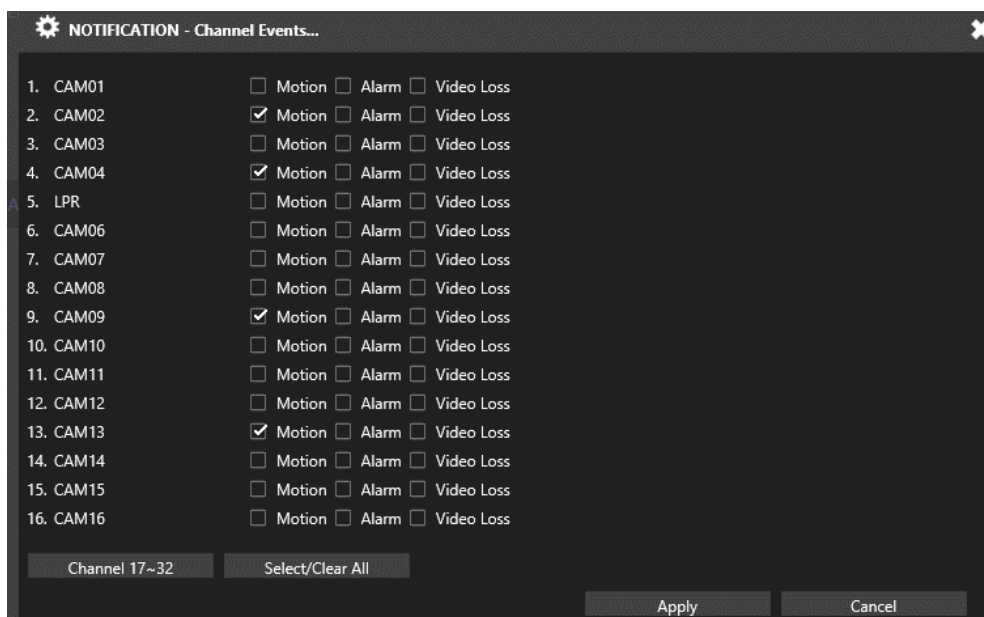


- Push Notifications

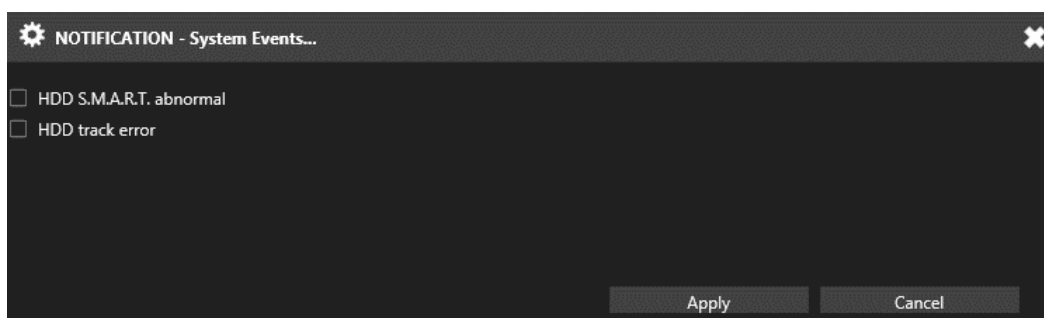
You can also select a dwell time in receiving push notifications from the NVR. Enter Alarm/Output from the menu and select NOTIFICATION.



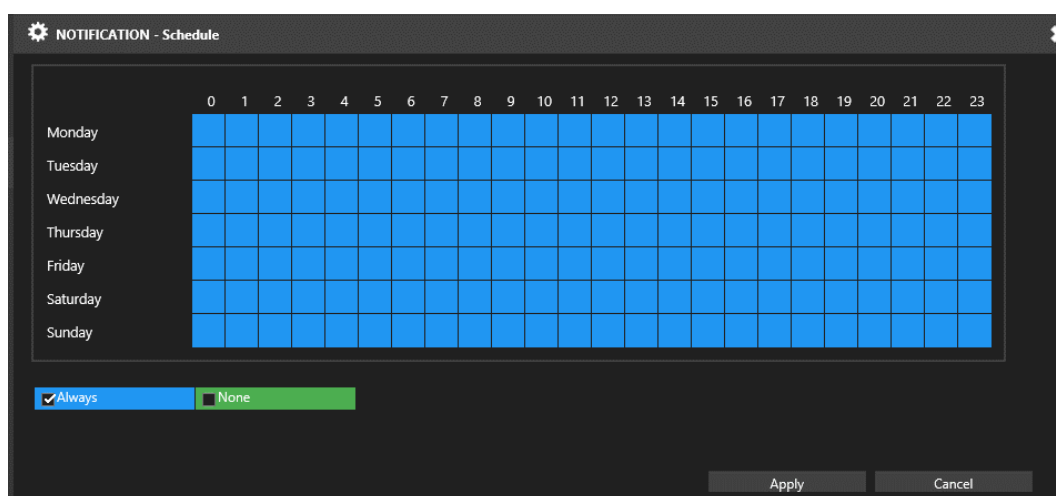
**Enable** push notifications by selecting on **Alarm Send Interval** can be sent between 5 to 100 seconds – Above I have set to 30 seconds so I will only receive a push notification every 30 seconds, even if the channel was constantly alarming. **Trigger Conditions** you can choose what channels and type of alarm you receive here.



For each channel 3 alarm types are available (IVS2.2 comes under motion alarms)  
Also, under trigger conditions you could set notifications for system events including...

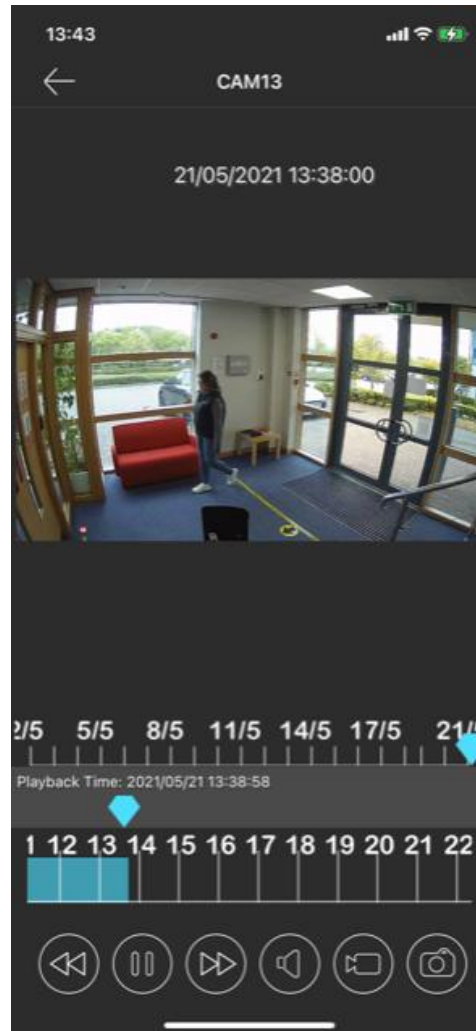
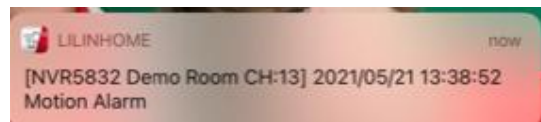


All notifications can also be scheduled so that you only receive notifications at specified times, even if the NVR is receiving and logging alarms at other times.



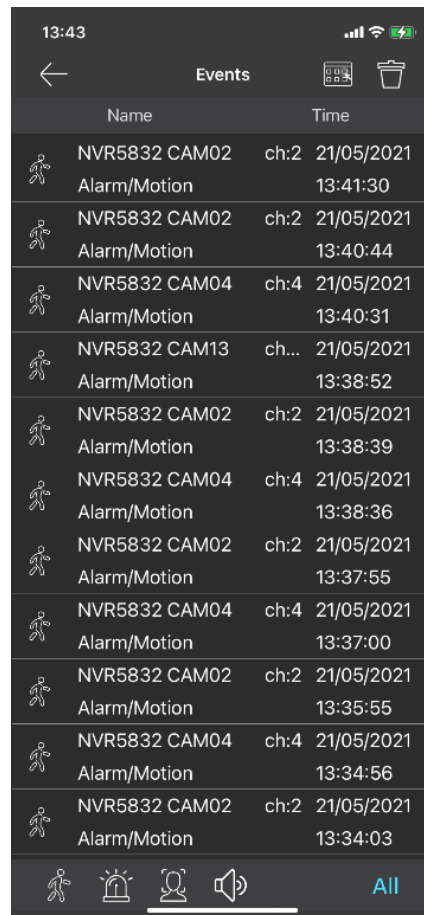


- LILINHome



Once configured to receive push notifications from the NVR you can click on a notification to jump straight to the recorded event.

You can also view alarms under the EVENTS tab.



The screenshot shows the 'Events' tab in the LILIN mobile app. At the top, the status bar displays the time 13:43, signal strength, Wi-Fi, and battery icons. Below the status bar is a navigation bar with a back arrow, the title 'Events', and two icons: a calendar and a trash can. The main content area is a table with two columns: 'Name' and 'Time'. Each row represents an alarm event, starting with a person icon, followed by the camera name (e.g., NVR5832 CAM02), the channel (e.g., ch:2), the date (21/05/2021), and the time (e.g., 13:41:30). The events are listed in descending order of time. At the bottom of the screen is a navigation bar with four icons: a person, a bell, a magnifying glass, and a speaker, followed by the word 'All' in blue text.

Name	Time
NVR5832 CAM02 Alarm/Motion	ch:2 21/05/2021 13:41:30
NVR5832 CAM02 Alarm/Motion	ch:2 21/05/2021 13:40:44
NVR5832 CAM04 Alarm/Motion	ch:4 21/05/2021 13:40:31
NVR5832 CAM13 Alarm/Motion	ch:... 21/05/2021 13:38:52
NVR5832 CAM02 Alarm/Motion	ch:2 21/05/2021 13:38:39
NVR5832 CAM04 Alarm/Motion	ch:4 21/05/2021 13:38:36
NVR5832 CAM02 Alarm/Motion	ch:2 21/05/2021 13:37:55
NVR5832 CAM04 Alarm/Motion	ch:4 21/05/2021 13:37:00
NVR5832 CAM02 Alarm/Motion	ch:2 21/05/2021 13:35:55
NVR5832 CAM04 Alarm/Motion	ch:4 21/05/2021 13:34:56
NVR5832 CAM02 Alarm/Motion	ch:2 21/05/2021 13:34:03

Click on an alarm and playback will start.

Note: Only alarms that you have received a notification for appear in the EVENTS tab. So, if you configure a schedule for push notifications on your NVR the alarms that occurred during the no notification period will not show on the EVENTS tab.

## Contact

Contact [lilin.zendesk.com](https://lilin.zendesk.com) for technical support.