

## Merit LILIN Application Note

### How to use a camera digital input to trigger Navigator emap

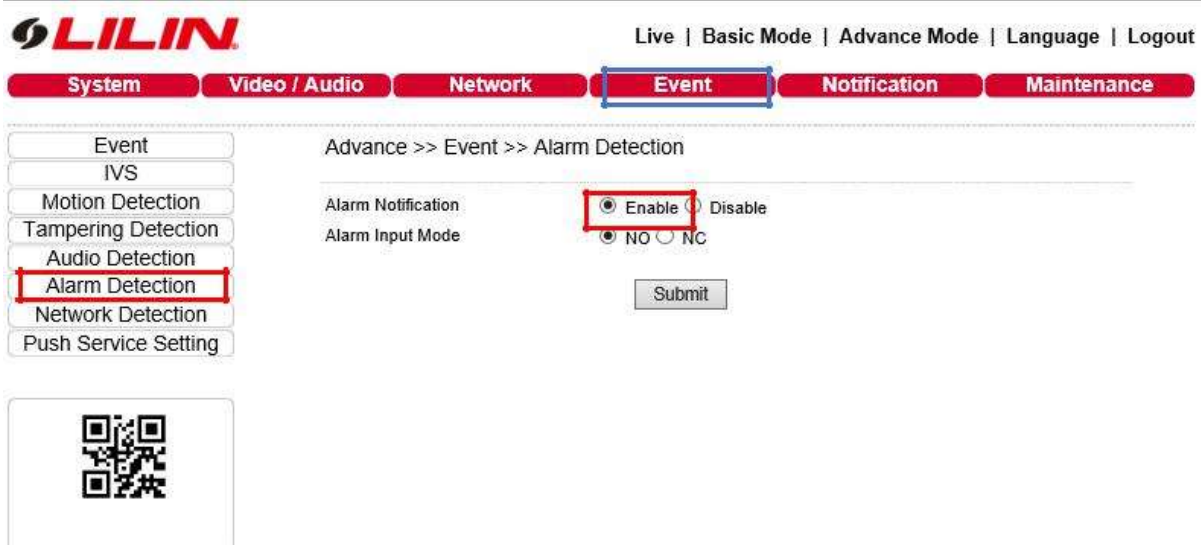
Document Number : A00179

Date : 2019/02/15

Dept: Technical Support, Taipei

**Subject:** This document describes how to use an IP cameras digital input to trigger our software NAVIGATOR

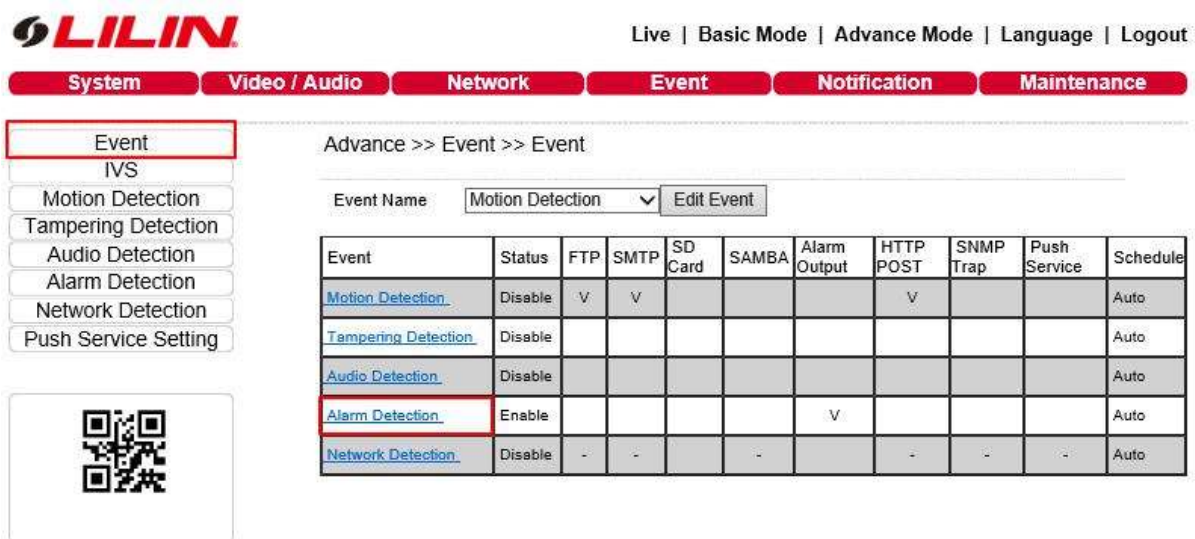
From the IP Camera, go to Setup, then click the event tab, then alarm detection



The screenshot shows the LILIN web interface. At the top, there is a navigation bar with links: Live | Basic Mode | Advance Mode | Language | Logout. Below this is a menu bar with tabs: System, Video / Audio, Network, Event (highlighted in blue), Notification, and Maintenance. On the left side, there is a sidebar menu with options: Event, IVS, Motion Detection, Tampering Detection, Audio Detection, Alarm Detection (highlighted in red), Network Detection, and Push Service Setting. The main content area shows the path: Advance >> Event >> Alarm Detection. Under 'Alarm Notification', there are two radio buttons: 'Enable' (selected and highlighted in red) and 'Disable'. Under 'Alarm Input Mode', there are two radio buttons: 'NO' (selected) and 'NC'. A 'Submit' button is located at the bottom right of the settings area. A QR code is visible in the bottom left corner.

Turn Alarm Notification to enable and alarm input to NO

Click on Event on the left, then Alarm detection in blue



The screenshot shows the LILIN web interface. At the top, there is a navigation bar with links: Live | Basic Mode | Advance Mode | Language | Logout. Below this is a menu bar with tabs: System, Video / Audio, Network, Event (highlighted in blue), Notification, and Maintenance. On the left side, there is a sidebar menu with options: Event (highlighted in red), IVS, Motion Detection, Tampering Detection, Audio Detection, Alarm Detection, Network Detection, and Push Service Setting. The main content area shows the path: Advance >> Event >> Event. Below this, there is a dropdown menu for 'Event Name' with 'Motion Detection' selected and an 'Edit Event' button. A table of event settings is displayed below the dropdown menu.

Event	Status	FTP	SMTP	SD Card	SAMBA	Alarm Output	HTTP POST	SNMP Trap	Push Service	Schedule
<a href="#">Motion Detection</a>	Disable	V	V				V			Auto
<a href="#">Tampering Detection</a>	Disable									Auto
<a href="#">Audio Detection</a>	Disable									Auto
<a href="#">Alarm Detection</a>	Enable					V				Auto
<a href="#">Network Detection</a>	Disable	-	-		-		-	-	-	Auto

Follow the below setting and enable alarm output

Advance >> Event >> Event

Event: **Enable** ☒

Alarm Detection:

- ☐ FTP Service Dwell Time: 1 Sec.
- ☐ SMTP Service Dwell Time: 5 Sec.
- ☐ SD Card Service Dwell Time: 60 Sec.
- ☐ SAMBA Service Dwell Time: 60 Sec.
- ☒ **Alarm Output** Dwell Time: 5 Sec.
- ☐ HTTP POST Service Dwell Time: 5 Sec.  
HTTP POST Service : URL /url
- ☐ SNMP Trap Service
- ☐ Push Service Dwell Time: 5 Sec.

Schedule Setting: ☒ Always ☐ Schedule

Click Submit

Open the Navigator software, go to the IPC alarm management settings. Enable REMOTE DIGITAL INPUT and enable ALARM FULL SCREEN

Alarm Management Cam#001

Condition#1 Condition#2 Condition#3 Condition#4 Others

Alarm Input Management:

- ☒ Remote Digital Input
- ☐ Remote IVS (Motion) Detection
- ☐ Remote Face Detection
- ☐ Remote Tamper detection
- ☐ Remote Audio Detection
- ☐ External IO Device
- ☐ Motion Detection

Alarm Output (DO):

- ☐ Play Sound
- ☐ Send Email
- ☐ PTZ Preset Recall
- ☐ Signal Digital Output
- ☒ **Alarm Full Screen**
- ☐ Post-alarm Record
- ☐ Pre-alarm Record

Open EMAP manager

If the camera is added to the navigator, it should appear on the bottom right



Go to EMAP EDIT MODE

Pull the camera on to the map and go to EMAP ALARM SWITCHING MODE

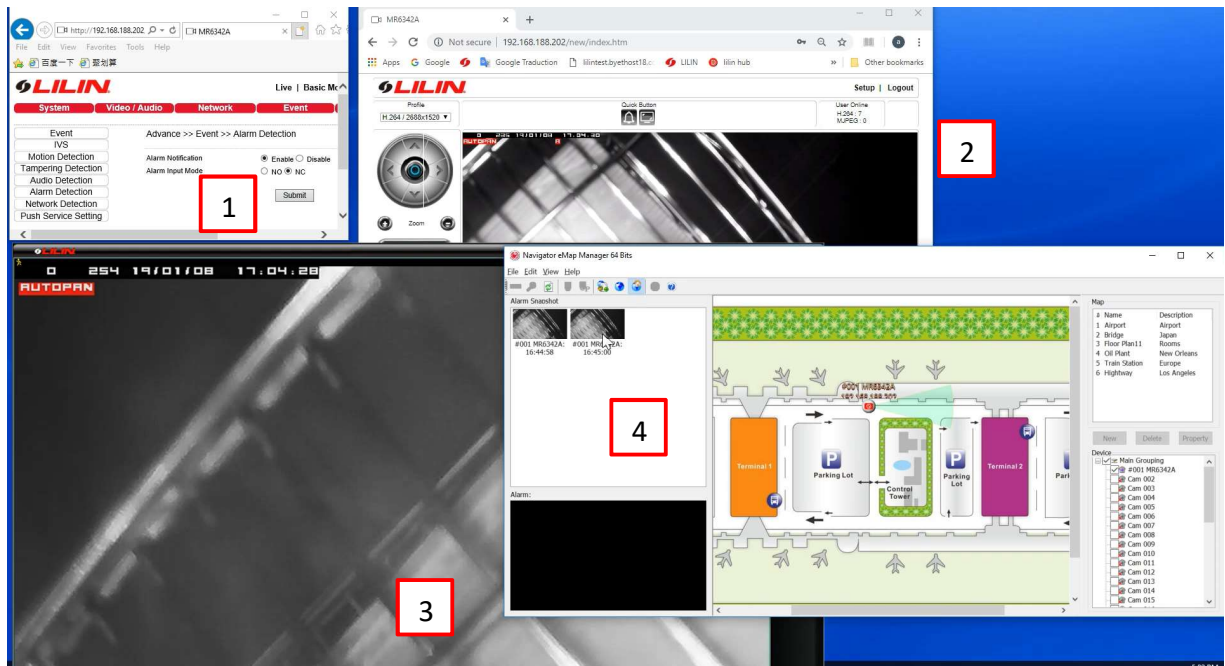
## TESTING CONDITION

If you don't have the PIR sensor you can use the alarm setting and set the camera to NC.

Open an Internet Explorer window with the camera setting page visible (as shown in image #1)

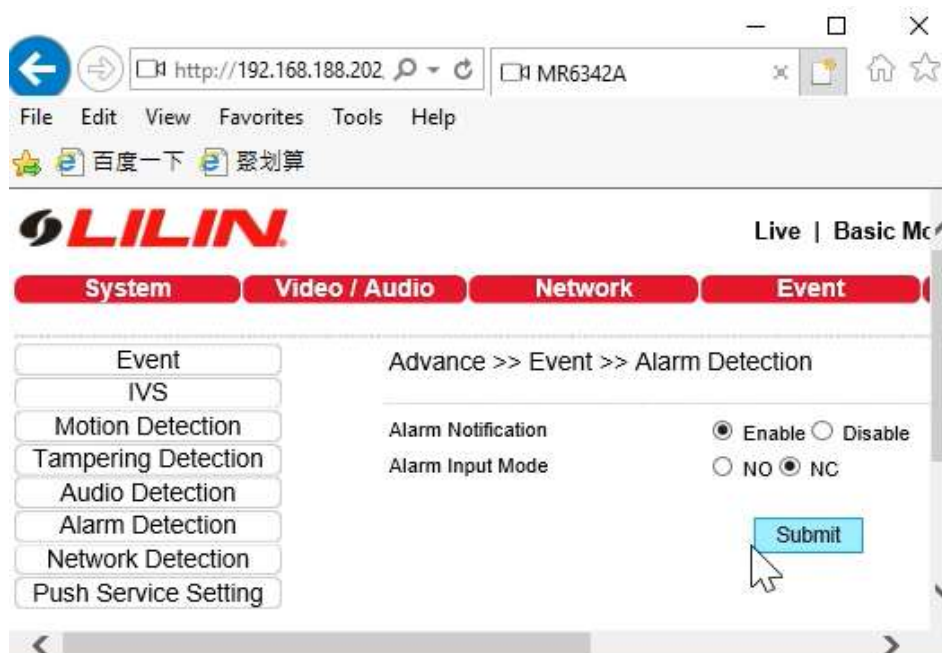
Open an Internet Explorer window with a live picture (as shown in image #2)

Open a window with the navigator software in 4 split mode (as shown in image #3) open emap manager (as shown in image #4)

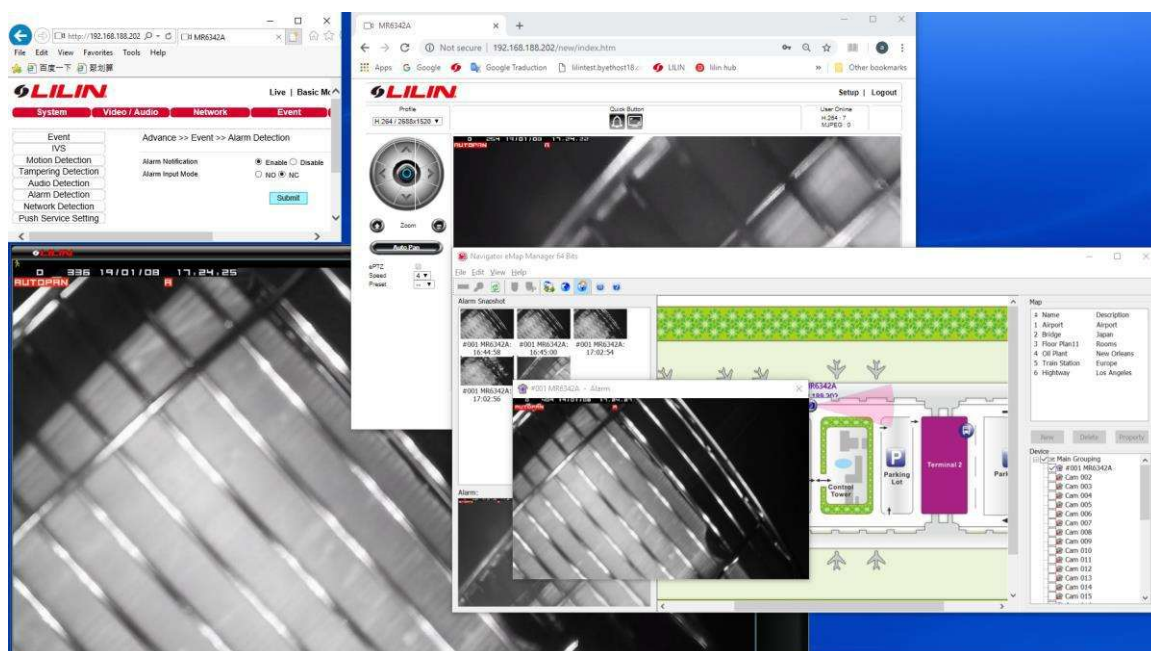




On the camera within the alarm detection window click on NC then submit



An Alarm icon should appear on the live view within the navigator software and a pop up window should appear in emap



You can see the video demo by clicking below link

<https://www.dropbox.com/s/rh1vcs955a25zry/alarm%20setting%20emap.mp4?dl=0>

## Contact

Contact [fae@meritlilin.com.tw](mailto:fae@meritlilin.com.tw) for technical support.