

Merit LILIN Application Note

How to use IPv6 on an IP Camera and configure a connection

Document Number : A00197

Date : 2019/06/11

Dept: Technical Support, Taipei

Subject: This guide explains how to use IPv6 and how to configure a connection to a camera

First, please apply for IPv6 from local Internet Service Provider to get the below information:

Example Information

IPv6 User Host

IPv6 Address: 2001:B030:2427:FF60::/64

Default Gateway: 2001:B030:2427:FF60::FFFF/64

IPv6 Client Gateway

Gateway WAN Port IPv6 Address: 2001:B030:2427:FF60::0001/64

WAN Port - Default Gateway: 2001:B030:2427:FF60::FFFF/64

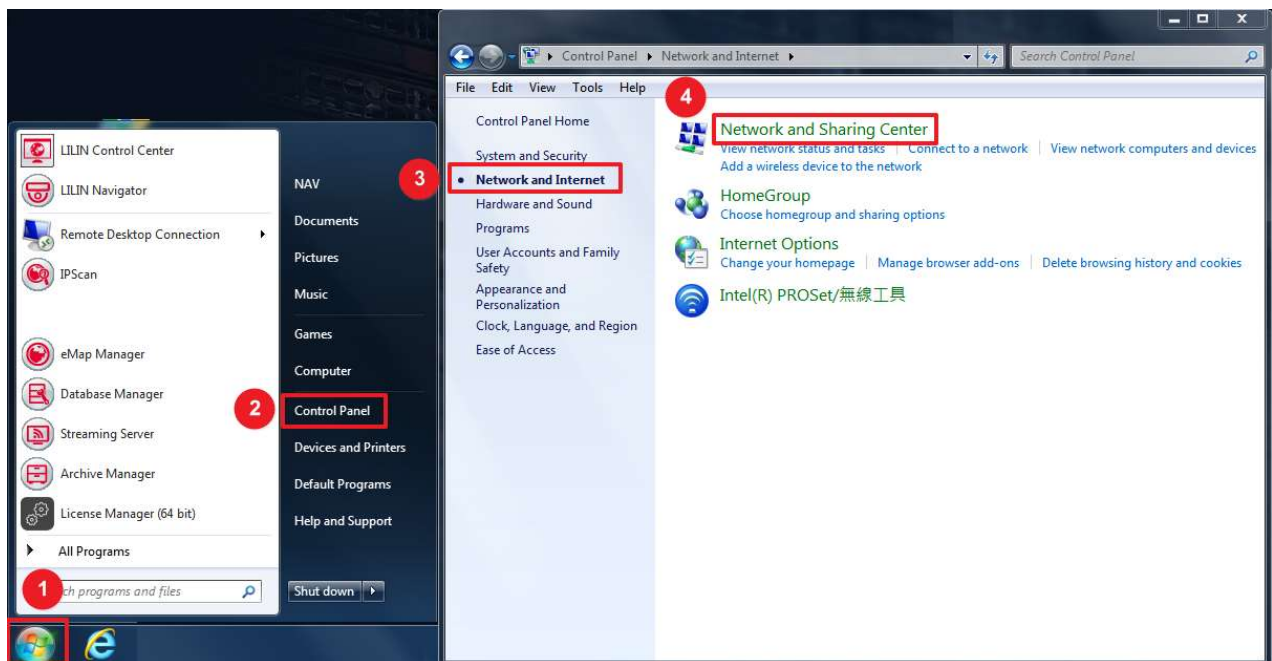
LAN Port - IPv6 address: 2001:B030:2427:0600::/56

Hinet DNS : Preferred 2001:b000:168::1

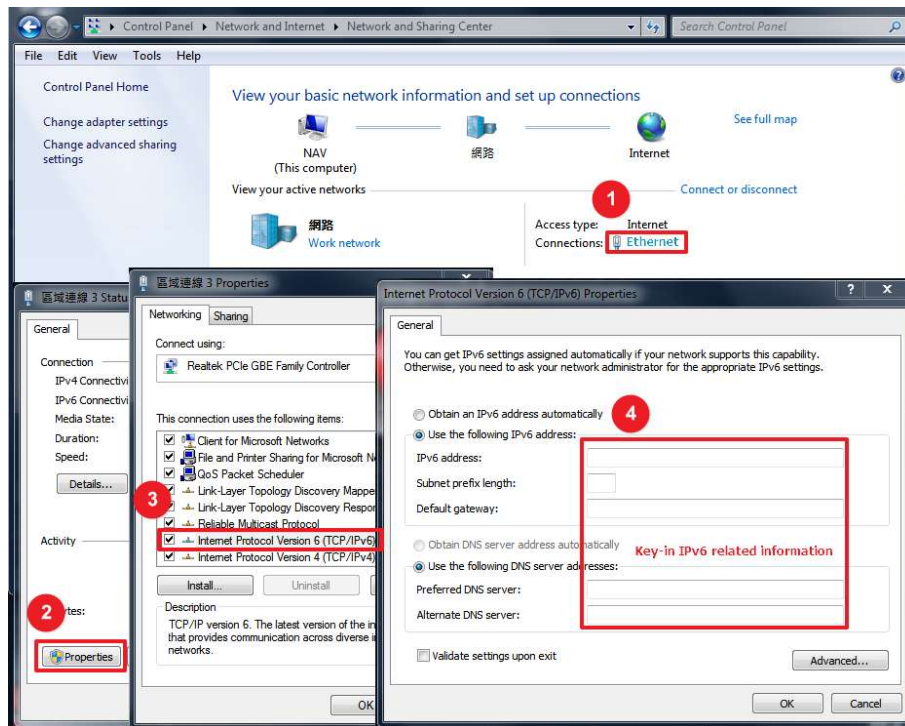
Alternative 2001:b000:168::2

Note: Obtained network 2001:b030:2427:ff60::/64 represents
2001:b030:2427:ff60:0000:0000:0000:0000 ~ 2001:b030:2427:ff60:ffff:ffff:ffff:ffff

1. On a PC, click on Start"→ "Control Panel" → "Network and Internet" →"Network and Sharing Center"



2. Click on “Ethernet” → “Properties” → “Internet Protocol Version 6 (TCP/IPv6)” → “General”



Fill in the related column with IPv6 information provided by local Internet Service Provider.

After completing above setup, use IPv6 test website for support status check.

3. Verify Completion

Click on <http://ipv6-test.com/> to get the test results.

The screenshot shows the 'ipv6 test' website interface. The 'General' tab is selected. The 'IPv4 connectivity' section shows 'Supported' status with an IP address of 59.124.126.102 and ISP Hinet. The 'IPv6 connectivity' section shows 'Supported' status with an address of 2001:b030:2427:ff60::1, Type 'Native IPv6', and ISP Hinet Twinc. The 'Score' section shows a score of 20 / 20. The 'Browser' section shows 'Default' as 'IPv6' and 'Fallback' as 'to IPv4 in < 1 second'. The 'DNS' section shows 'DNS4 + IP6', 'DNS6 + IP4', and 'DNS6 + IP6' all as 'Reachable'. There are buttons for 'Speed test' and 'Ping test' at the bottom.

Click on <http://test-ipv6.com/> to get the test results.

[測試 IPv6](#)
[常見問題](#)
[鏡像伺服器](#)

測試你的 IPv6 連線。

[總結](#)
[測試結果](#)
[分享結果 / 聯繫我們](#)
[其他 IPv6 網站](#)

- 你在網際網路上的IPv4位址 59.124.126.102
- 你在網際網路上的IPv6位址 2001:b030:2427:ff60::1
- 你的網路服務提供者 (ISP) 是 HINET Data Communication Business Group
- Since you have IPv6, we are including a tab that shows how well you can reach other IPv6 sites. [\[詳細資訊\]](#)
- [HTTPS](#) 支援現已在本網站上提供。 [\[詳細資訊\]](#)
- 你的 DNS 伺服器 (可能由你的ISP維護) 似乎支援 IPv6 的網際網路通訊協定。

Open web browser to connect to IP camera for configuration.

4. Click on “Advanced Mode” → “Network” → “General IPv6” → select Network On and key-in IPv6 related information

[Live](#) | [Basic Mode](#) | [Advanced Mode](#) | [Language](#) | [Log out](#)

[System](#)
[Video/Audio](#)
[Network](#)
[Event](#)
[Notification](#)
[Maintenance](#)

[General](#)
[General IPv6](#)
[HTTP/RTSP Service](#)
[Multicast](#)
[DDNS](#)
[UPnP](#)
[Bonjour](#)
[SDDP/Heartbeat](#)
[SNMP](#)

Advanced >> Network >> General IPv6

Network ☒ On ☐ Off

IP Address /64

Default Router

Default DNS

5. Use ping to verify IP Camera enable IPv6

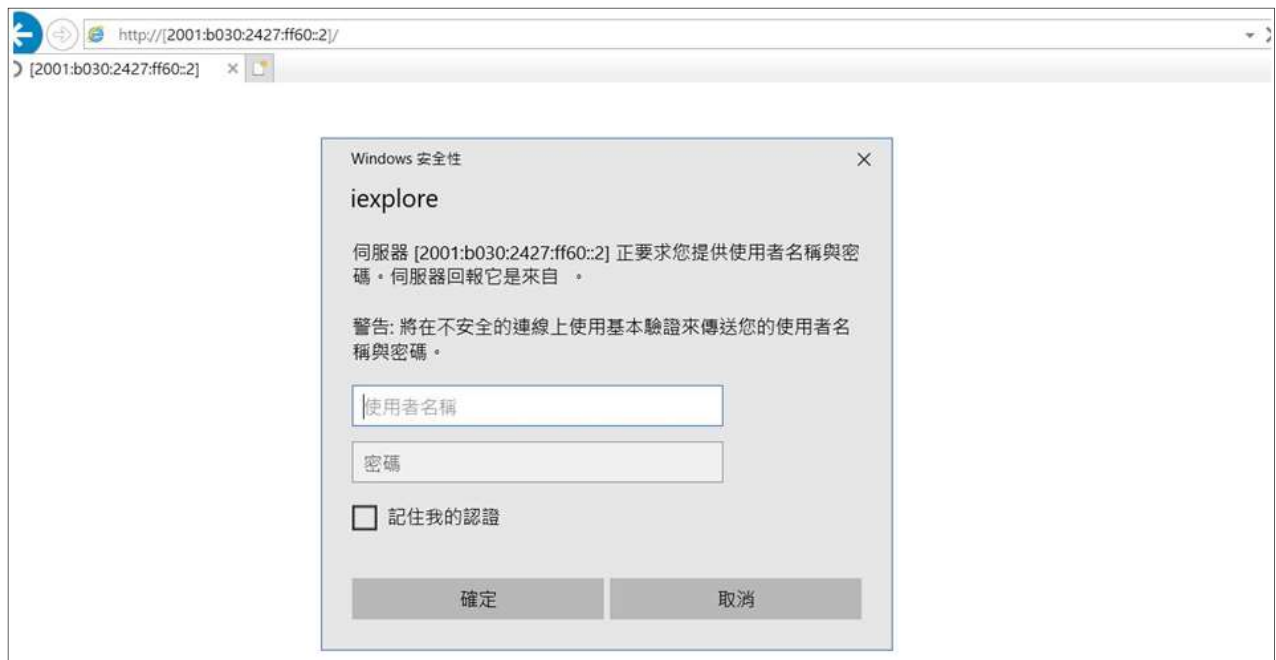
```

C:\> 命令提示字元
C:\Users\disli>
C:\Users\disli>
C:\Users\disli>ping 2001:b030:2427:ff60::2

Ping 2001:b030:2427:ff60::2 (使用 32 位元組的資料):
回覆自 2001:b030:2427:ff60::2: 時間<1ms
回覆自 2001:b030:2427:ff60::2: 時間<1ms
回覆自 2001:b030:2427:ff60::2: 時間<1ms
回覆自 2001:b030:2427:ff60::2: 時間<1ms

2001:b030:2427:ff60::2 的 Ping 統計資料:
    封包: 已傳送 = 4, 已收到 = 4, 已遺失 = 0 (0% 遺失),
    大約的來回時間 (毫秒):
        最小值 = 0ms, 最大值 = 0ms, 平均 = 0ms
  
```

6. To connect to web-based setup page, enclose IPv6 in "[]" square bracket and enter in web address column



Contact

Contact <http://lilin.zendesk.com> for technical support.

For more information, visit www.meritlilin.com.