

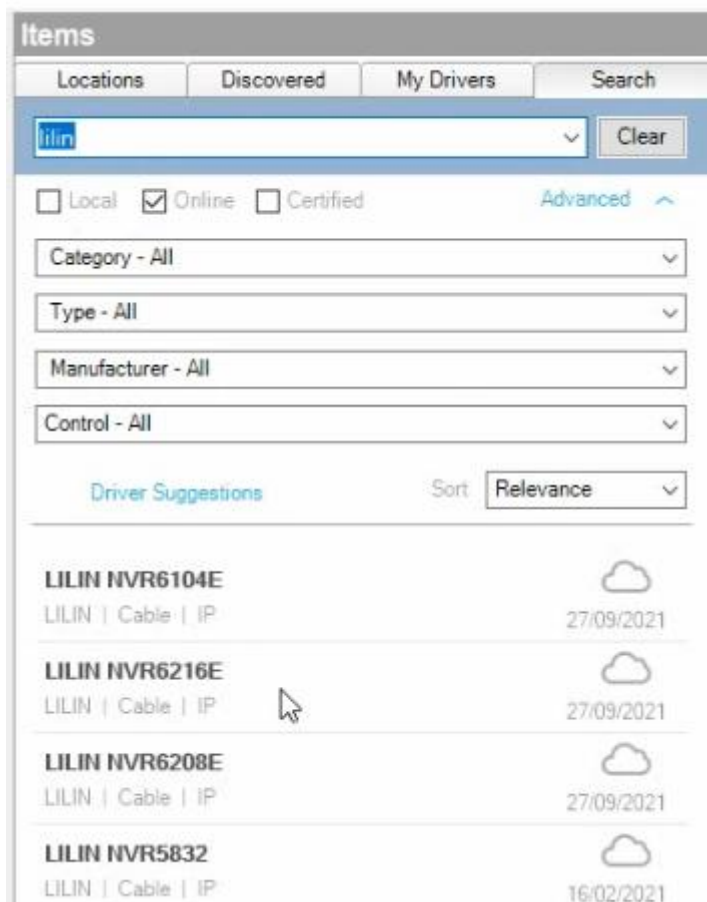
## LILIN EVR with Control4 Adding an EVR to Control4

This guide assumes that the EVR has already been configured with an IP address and has had an administrator password set when the NVR was accessed for the first time.

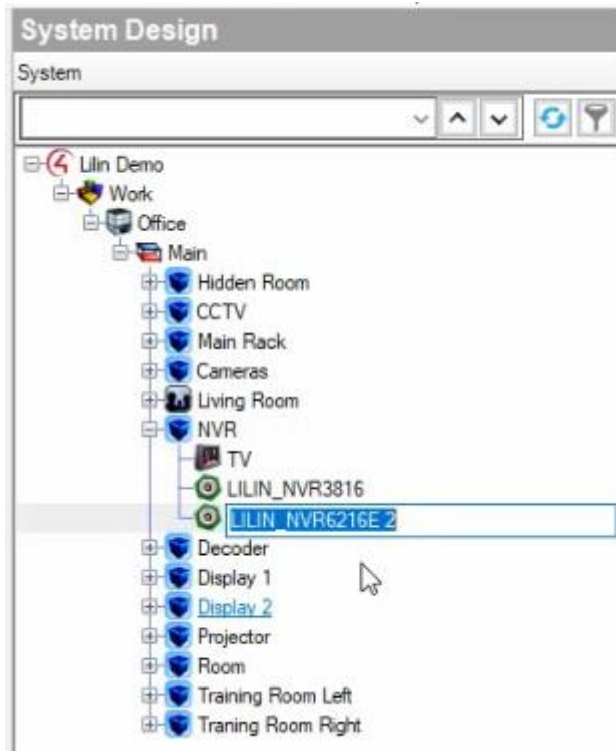
At the time of writing this guide, the EVR does not have its own Control4 driver, the EVR series use the NVR6104E, NVR6208E or NVR6216E.

If you have an EVR3104 use the NVR6104E driver, NVR3108 use the NVR6208E and EVR3116 use the NVR6216E driver. These drivers are available automatically within Control4.

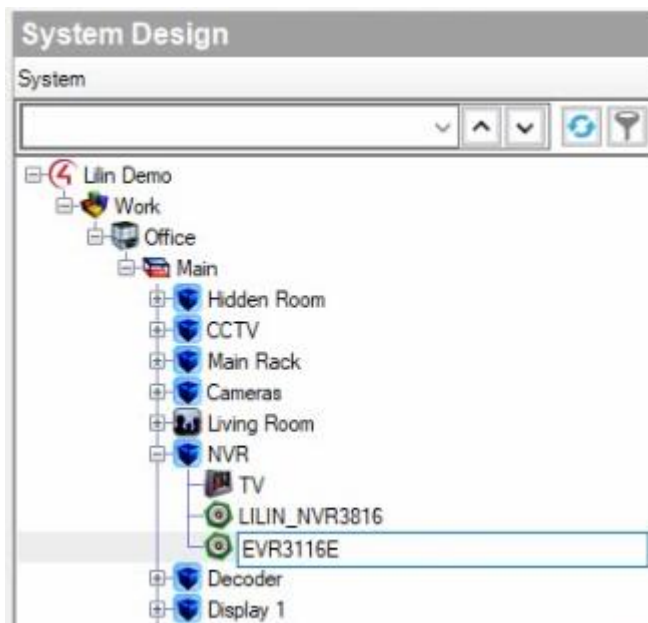
First, search for the relevant NVR 6 series driver using the Control4 driver search function.



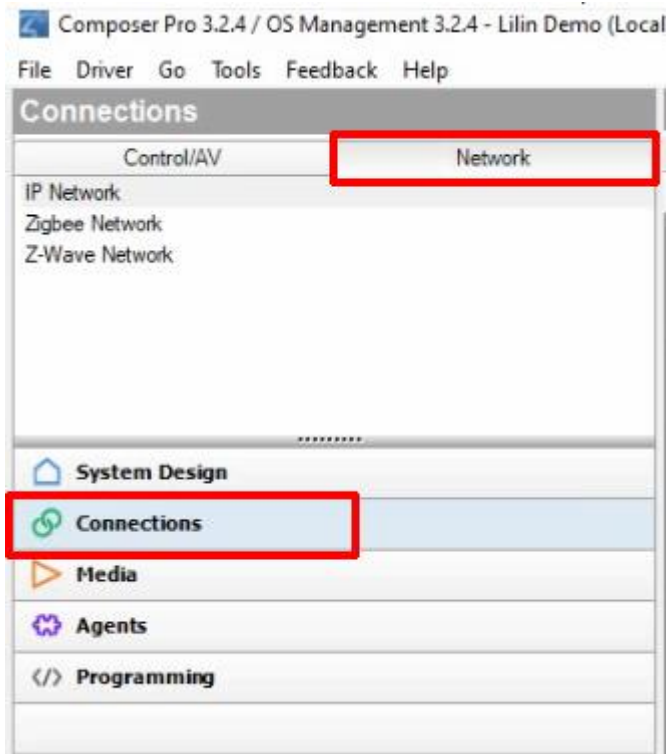
Next double click on the relevant driver for your EVR and composer will add the driver to the project.



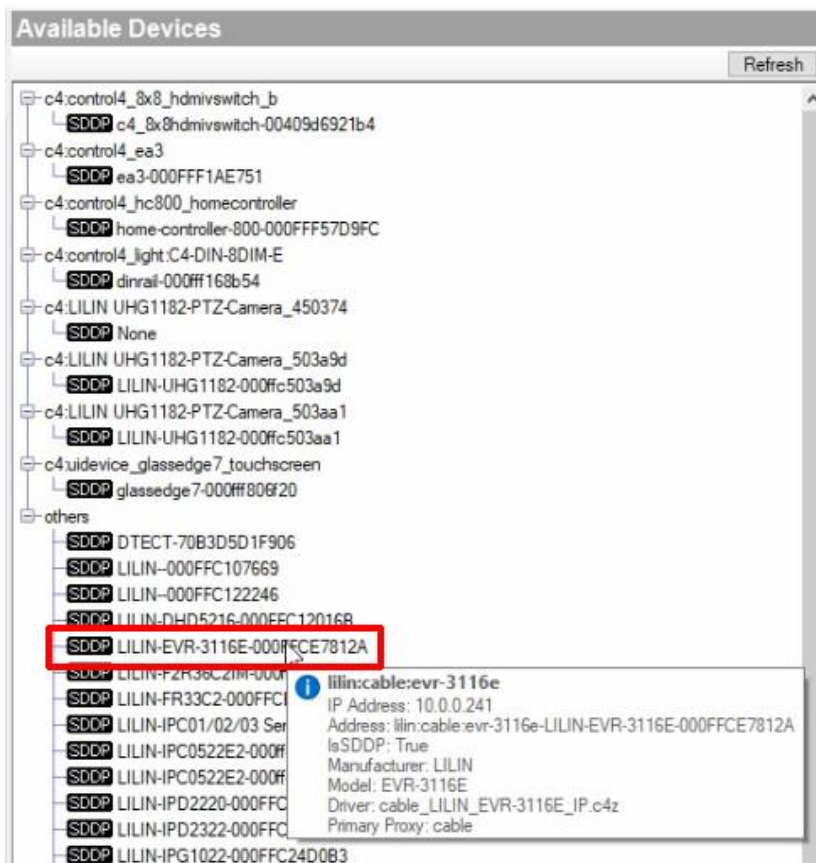
It is recommended to rename the device to the correct name.



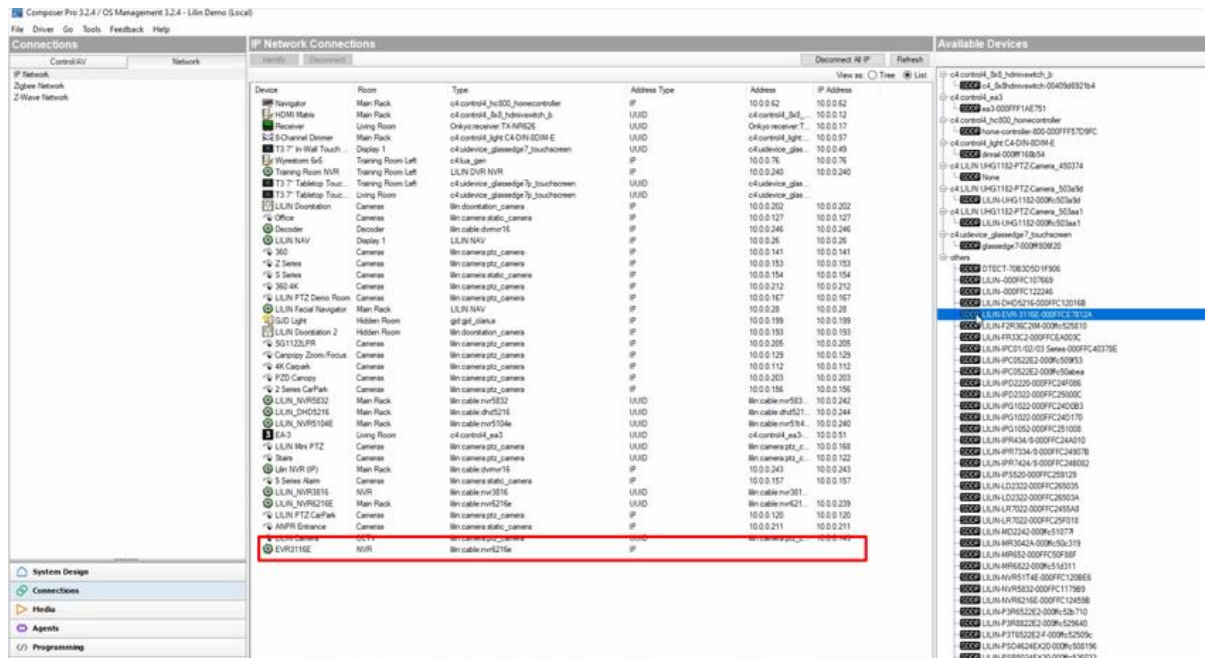
Next select the Connections tab and then the Network tab.



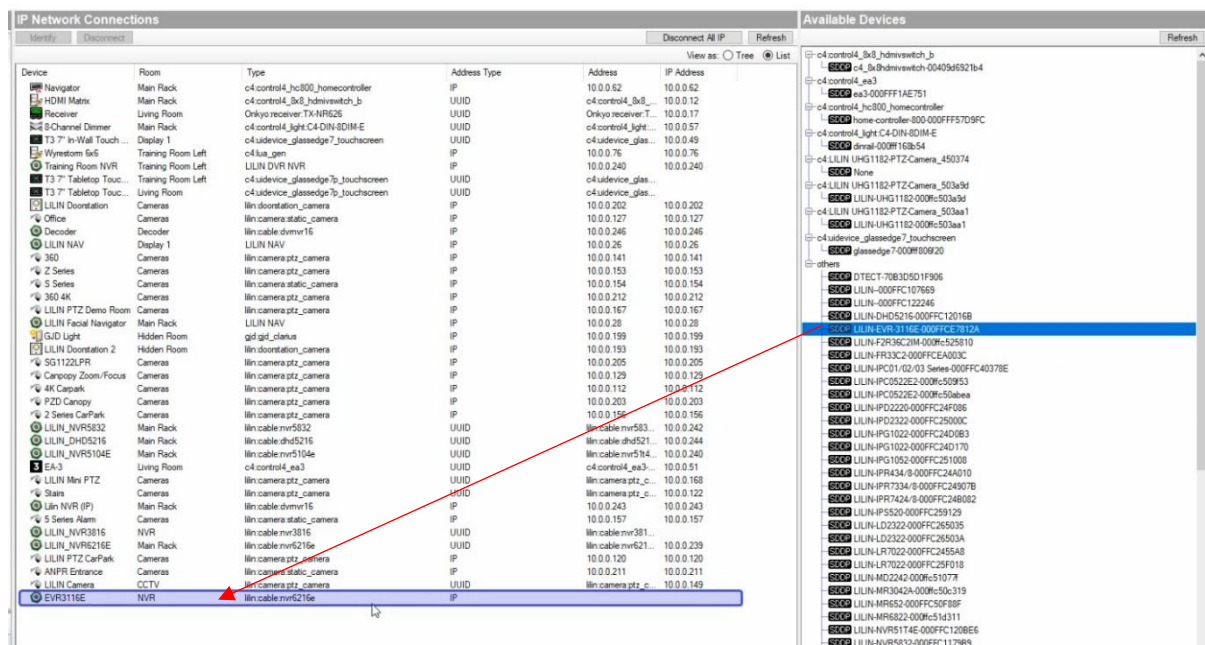
Under Available devices on the right-hand side will be a list of devices discovered via SDDP. Within that list will be the EVR you are currently installing.



In the IP Network Connections windows (middle windows) you should see the device we added in the earlier steps.



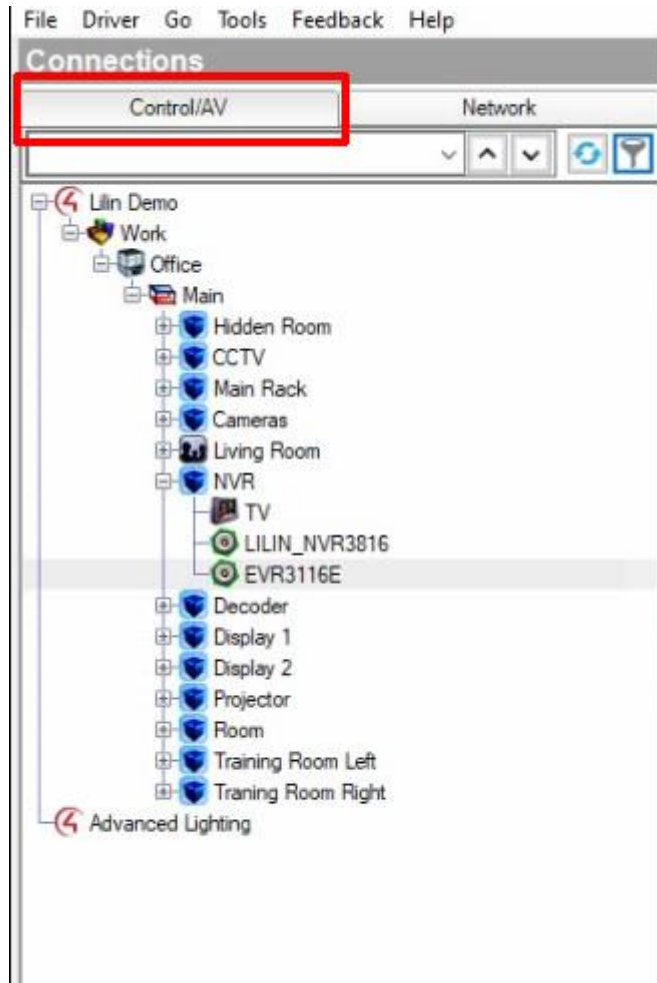
Now click and drag the available device on to the device showing in IP Network Connections



The device should now show its assigned IP address.



Now select the Control/AV tab towards the top left of the screen.



The centre windows will now change to the Control & Audio Video Connections.

Control & Audio Video Connections				
EVR3116E				
Name	Type	Connection	Input/Output	Connected To
<b>Audio/Video Inputs</b>				
Audio In	Audio	STEREO	Input	
<b>Audio/Video Outputs</b>				
HDMI	Video	HDMI	Output	
VGA	Video	VGA	Output	
Audio Out	Audio	STEREO	Output	
<b>Control Outputs</b>				
Relay1	Control	RELAY	Output	
Relay2	Control	RELAY	Output	
Relay3	Control	RELAY	Output	
Relay4	Control	RELAY	Output	
<b>Room Control</b>				
NVR Output AV End-Point	RoomControl	AUDIO_SELECTION	Output	
NVR Output AV End-Point	RoomControl	AUDIO_VOLUME	Output	
NVR Output AV End-Point	RoomControl	VIDEO_SELECTION	Output	
Filters: All Rooms   All Connections				
Device	Name	Location	Connections	
HDMI Matrix	Source 1	Main Rack	LILIN NAV->AV Out	
HDMI Matrix	Source 2	Main Rack	Nav Screen 2->hdmi	
HDMI Matrix	Source 3	Main Rack	LILIN_NVR5832->HDMI	
HDMI Matrix	Source 4	Main Rack	Apple TV->Output	
HDMI Matrix	Source 5	Main Rack		
HDMI Matrix	Source 6	Main Rack	LILIN_DHD5216->HDMI	
HDMI Matrix	Source 7	Main Rack		
HDMI Matrix	Source 8	Main Rack	Decoder->AV Out	



Next, click and drag the video output being used on the NVR to the video input of your video distribution matrix.

**Control & Audio Video Connections**  
EVR3116E

Name	Type	Connection	Input/Output	Connected To
<b>Audio/Video Inputs</b>				
Audio In	Audio	STEREO	Input	
<b>Audio/Video Outputs</b>				
HDMI	Video	HDMI	Output	
VGA	Video	VGA	Output	
Audio Out	Audio	STEREO	Output	
<b>Control Outputs</b>				
Relay1	Control	RELAY	Output	
Relay2	Control	RELAY	Output	
Relay3	Control	RELAY	Output	
Relay4	Control	RELAY	Output	
<b>Room Control</b>				
NVR Output AV End-Point	RoomControl	AUDIO_SELECTION	Output	
NVR Output AV End-Point	RoomControl	AUDIO_VOLUME	Output	
NVR Output AV End-Point	RoomControl	VIDEO_SELECTION	Output	

**HDMI Input Devices**

Filters: All Rooms | All Connections

Device	Name	Location	Connections
HDMI Matrix	Source 1	Main Rack	LILIN NAV->AV Out
HDMI Matrix	Source 2	Main Rack	Nav Screen 2->hdmi
HDMI Matrix	Source 3	Main Rack	LILIN_NVR5832->HDMI
HDMI Matrix	Source 4	Main Rack	Apple TV->Output
HDMI Matrix	Source 5	Main Rack	LILIN_DHD5216->HDMI
HDMI Matrix	Source 6	Main Rack	
HDMI Matrix	Source 7	Main Rack	
HDMI Matrix	Source 8	Main Rack	Decoder->AV Out

If successful Control4 will now show the EVR bound to the video matrix output.

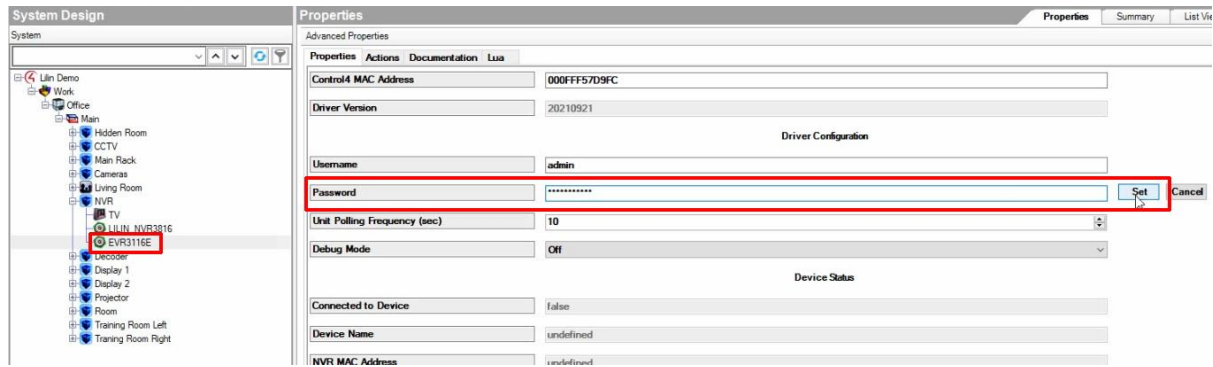
HDMI Matrix | Source 5 | Main Rack | **EVR3116E->HDMI**

Now select System Design from the left hand menu bar.



- System Design**
- Connections
- Media
- Agents
- Programming

Highlight the EVR from the device tree and enter the password for the NVR and click Set.



You should now see the EVR details on the properties page go from undefine to populated with the correct information.

Connected to Device	false
Device Name	undefined
NVR MAC Address	undefined
No of Channels	undefined
Current Channel	undefined
DVR ID	undefined
Last Reboot Time	undefined
Kernal Version	undefined

Connected to Device	TRUE
Device Name	EVR-3116E
NVR MAC Address	00:0F:FC:E7:81:2A
No of Channels	16
Current Channel	undefined
DVR ID	0
Last Reboot Time	2022/08/26 15:29:59
Kernal Version	4.9.118 #7926

Your EVR should now be controllable from a Control4 remote control.

## Additional Information

At the bottom of the Properties window, you are able to configure short cut buttons that are available on the Control4 remote control.

Properties

Advanced Properties

Properties Actions Documentation Lua

Unit Polling Frequency (sec)	10
Debug Mode	Off

Device Status

Connected to Device	TRUE
Device Name	EVR-3116E
NVR MAC Address	00:0F:FC:E7:81:2A
No of Channels	16
Current Channel	undefined
DVR ID	0
Last Reboot Time	2022/08/26 15:29:59
Kernel Version	4.9.118 #7926

Configurable Buttons

STAR	None
POUND	None
CC	None
INPUT - TV-VIDEO	None
PREV - RECALL	None
INFO	None
DVR	SEARCH
GUIDE	None
RED BUTTON	None
GREEN BUTTON	None
YELLOW BUTTON	None

