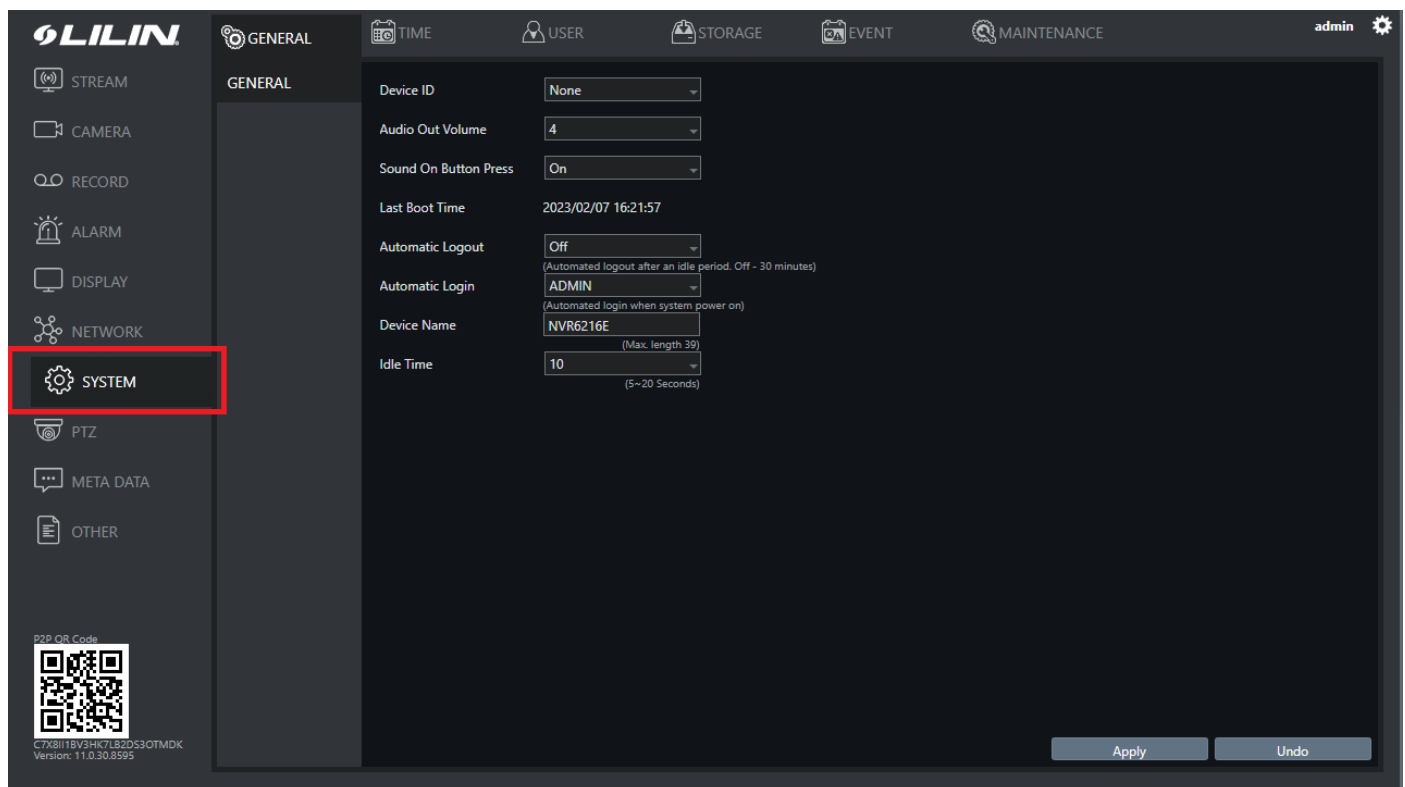


LILIN NVRs

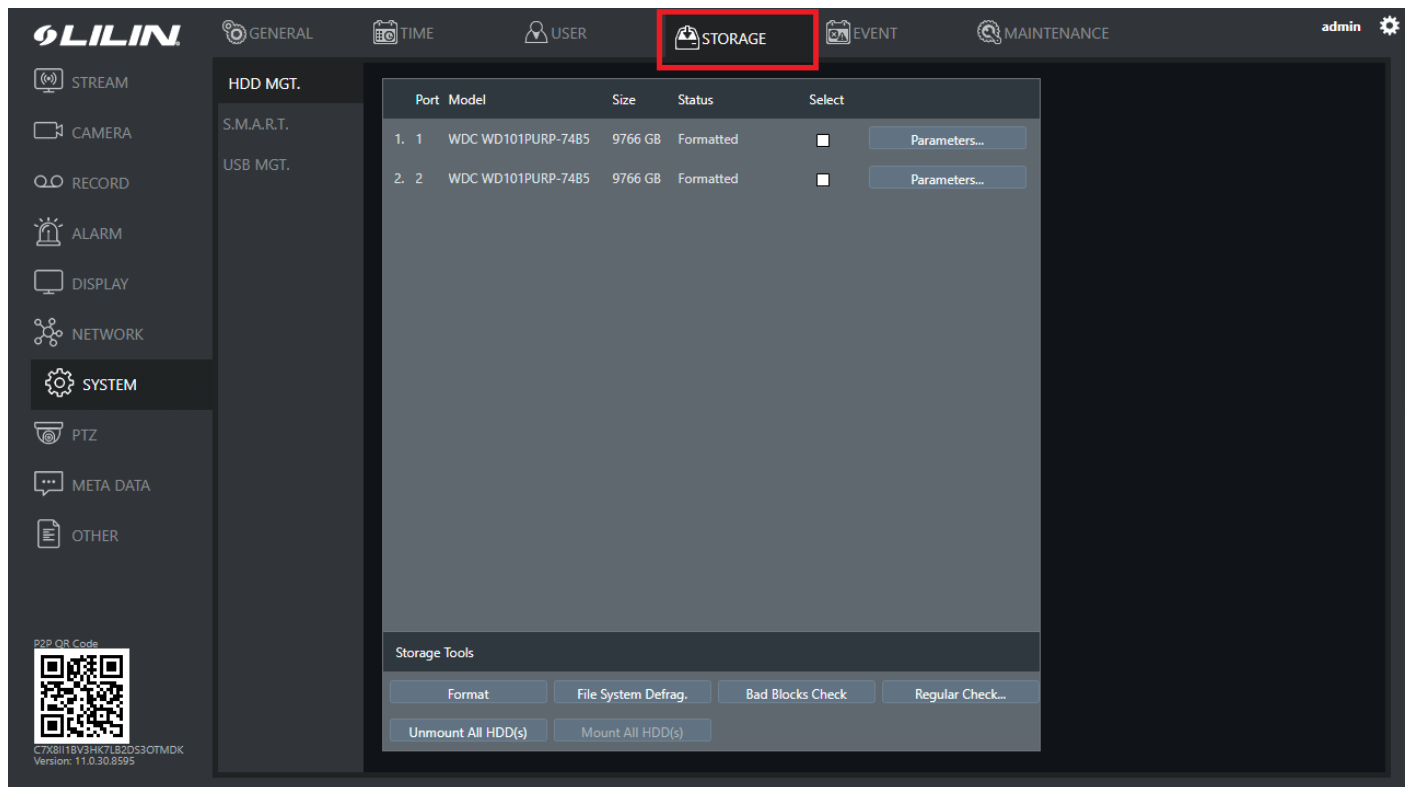
Formatting a Hard Drive.

The images shown in this guide are from a 6 series NVR running a 2023 firmware. The menu may look different on an older NVR model, but the structure is the same.

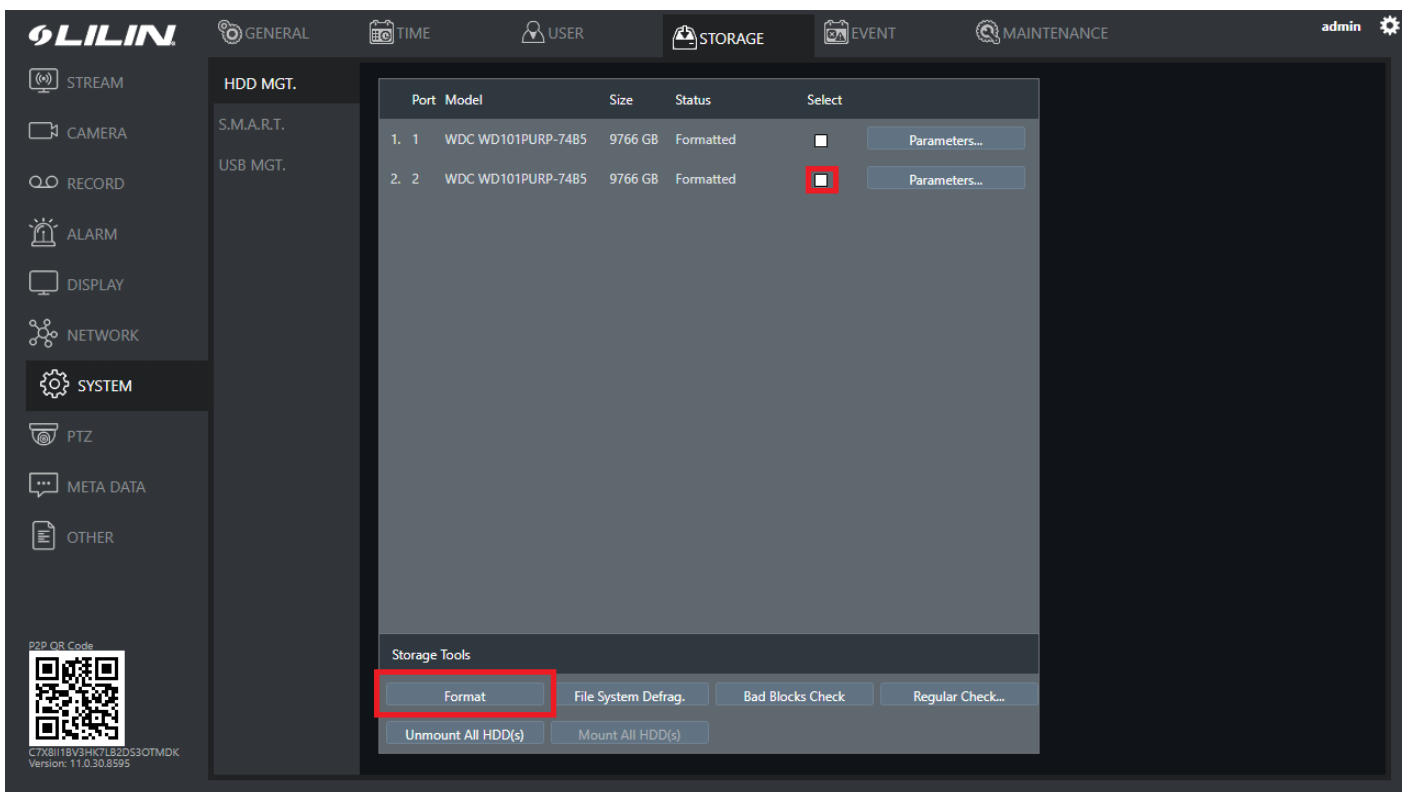
- 1) Turn off the NVR. Unplug the old hard drive(s) and remove the hard drive frame from the NVR by removing the 4 screws holding it to the base of the unit. Remove the old hard drive(s) from frame.
- 2) Fit new hard drive(s) in the frame and plug the drive(s) in. Fit the frame back onto the base of the NVR.
- 3) Turn the NVR back on and enter the settings menu.
- 4) Click on the 'System' tab.



5) Click on 'Storage' in the top bar.



6) Your new hard drive will show as 'Unformatted' under Status. Click on the small white box next to your hard drive then click 'Format' at the bottom of the screen. You may be asked for the Admin password.



7) A loading bar will show as the drive is formatted. Once this is complete, the 'Status' will show 'Formatted' as per the images above.

Your hard drive is now installed and will automatically be recorded to.

Installing a new hard drive will not affect any of your existing settings; only the available record time (if you fit a larger disk).